



INFORMATION
ILLUSTRATION INDEX

1

ENGINE
TRANSMISSION

2

ELECTRICAL

3

BODY

4

PARTS NUMBER INDEX

5

PREFACE

When it becomes necessary to replace parts on SUZUKI MOTORCYCLES, always use SUZUKI GENUINE PARTS which have passed a strict inspection which guarantees quality performance.

This parts catalogue covers the list of all service parts for SUZUKI FD125XSU (KICK START) AND FD125XDU (ELECTRIC START)

INSTRUCTIONS FOR QUOTING THE CATALOGUE

1. **DIMENSIONS**

Dimensions of the parts in this catalogue are indicated in unit millimeters.

2. **ABBREVIATIONS**

Abbreviations used in this catalogue are as follows:

AR	: As required
ASSY	: Assembly
E. No.	: Engine number
F. No.	: Frame number
D	: Diameter of material
ID	: Inside diameter
OD	: Outside diameter
L	: Length
LH	: Left hand side
RH	: Right hand side
~100045	: Up to F. No. 100045
100046~	: From F. No. 100046
NT	: Number of teeth
OPT	: Optional
OS	: Over size
STD	: Standard
T	: Thickness
US	: Under size
W	: Width
12 X 34 X 5.6	Figures in the description column show the dimensions of parts.

3. **INNER PARTS OF ASSEMBLY**

Parts name with a dot (.) in front as shown in the description column indicates the component of the assembly also available individually.



4. **MODIFICATION NOTICE**

A parts bulletin will be sent to you on all occasions when changes in parts occur, including interchangeable modifications between new parts and old ones.

5. **NOTE**

5-1 There are some different parts from those of productions models among spare parts for the administrative reasons and common use of them with other models.

5-2 In respect of rubber hoses and vinyl tubes, please be sure to use them by cutting off according to the length mentioned on parts catalogue or what is actually required on the vehicle.

5-3 Note that the drawings on the illustration on page are for ready reference of spare parts number, not to be used as an assembly manual. When assembling, use "SUZUKI SERVICE MANUAL".

6. **SERIAL FRAME NUMBER**

FD125XSU : PMSF

FD125XDU : PMSF

6. **STD. COLOR CHART**

8.1 CODE 00K = MICA RED (00K) + BRILLIANT SILVER (339)

8.2 CODE 277 = ALPHA BLUE (277) + BLUISH PEARL (902)

COLOR NO.	PARTS COLOR DESCRIPTION
103	ARMY BLACK
104	ORGA BLACK
00K	MICA RED
217	ALPHA BLUE
333	WARM SILVER
339	BRILLINT SILVER
501	AURA YELLOW



FIG. 1

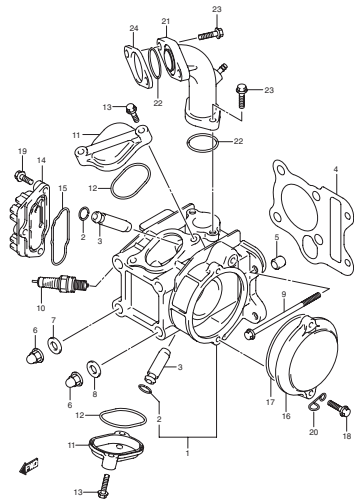


FIG. 2

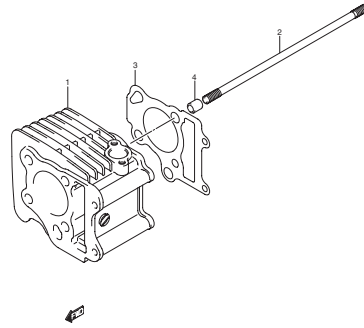


FIG. 3

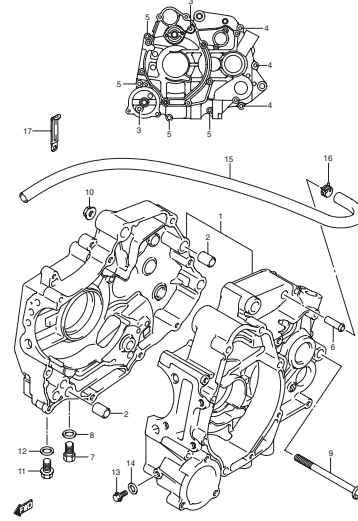
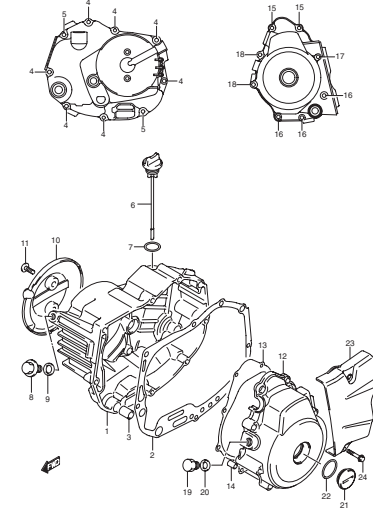


FIG. 4



1

FIG. 5

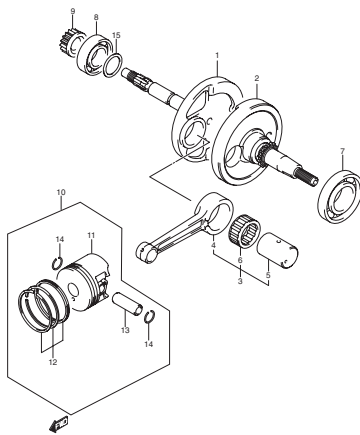


FIG. 5A

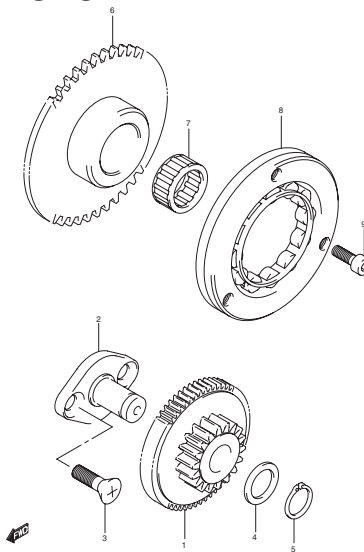


FIG. 6

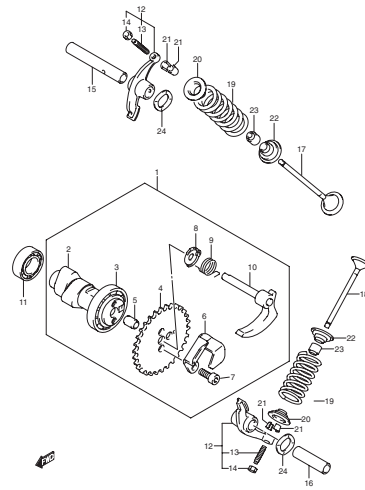
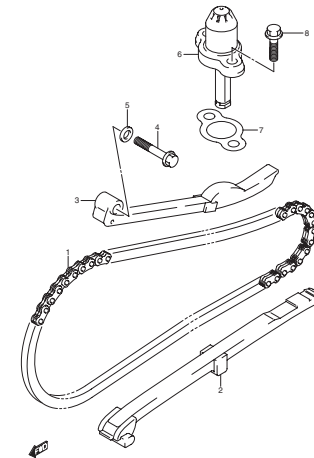


FIG. 7





1

FIG. 8

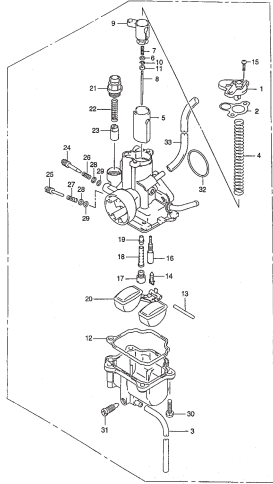


FIG. 9

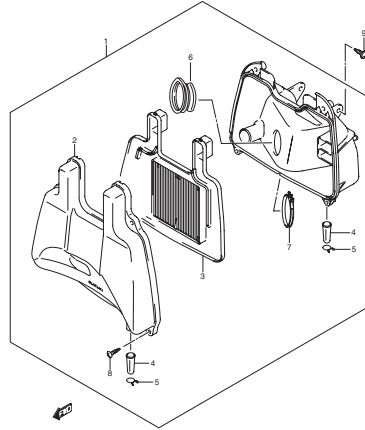


FIG. 10

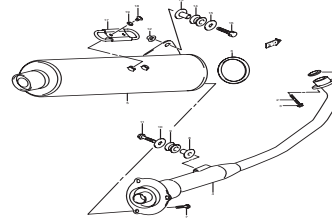


FIG. 11

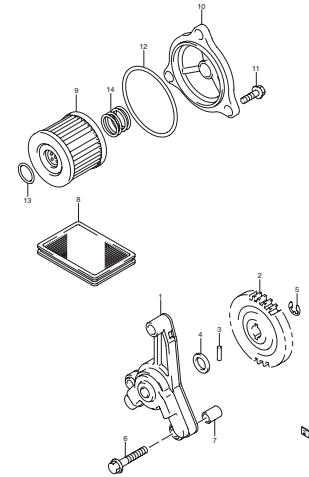


FIG. 12

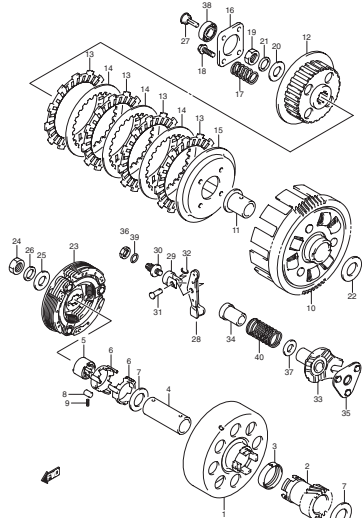


FIG. 13

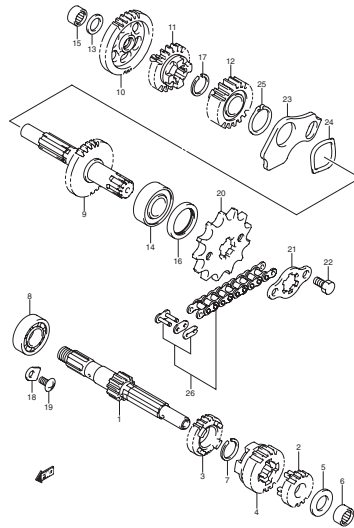


FIG. 14

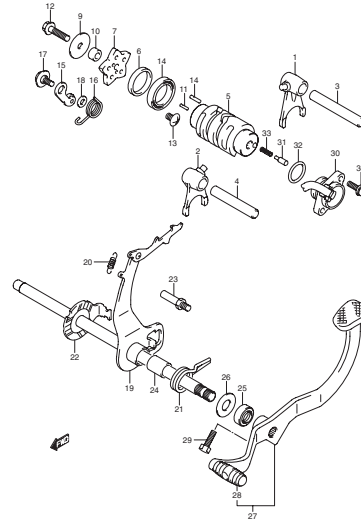


FIG. 15

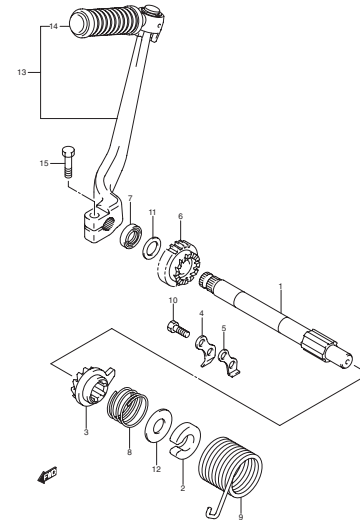




FIG. 16

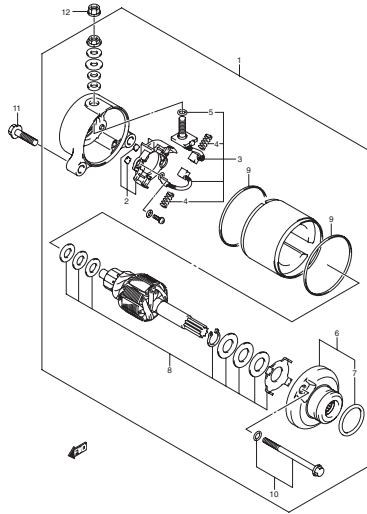


FIG. 17

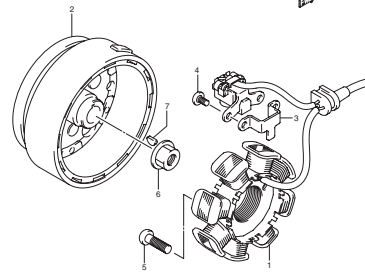


FIG. 18

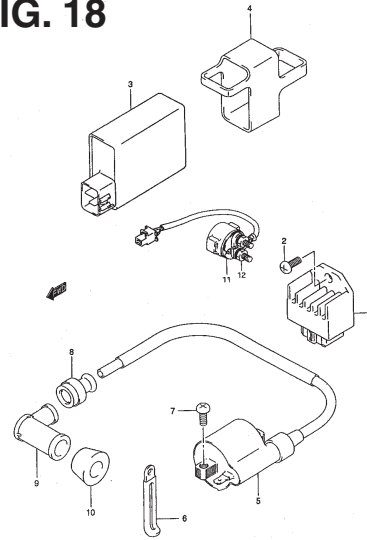
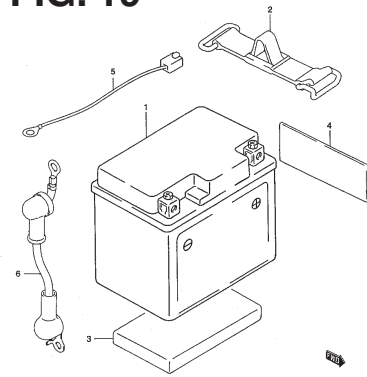


FIG. 19



1

FIG. 20

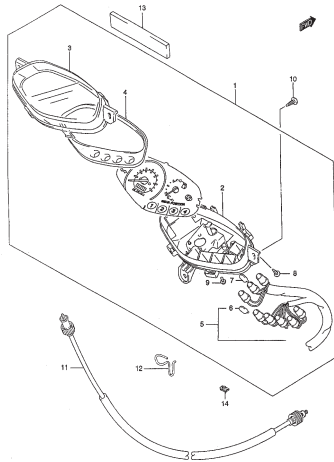


FIG. 21

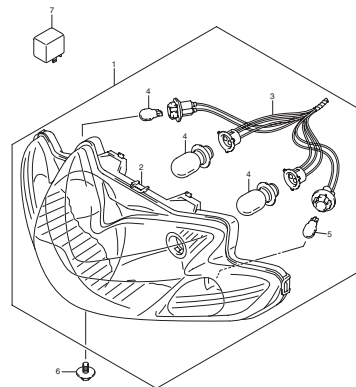


FIG. 22

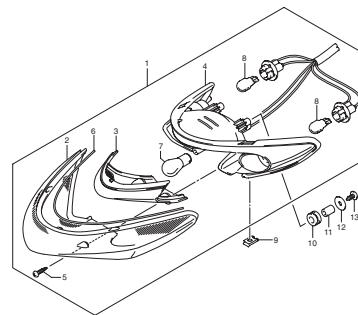
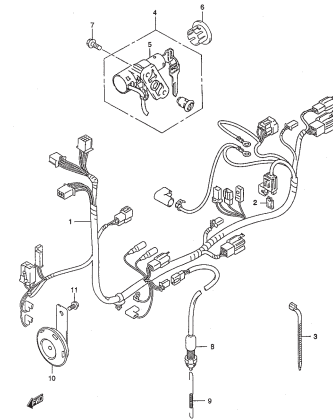


FIG. 23





1

FIG. 24

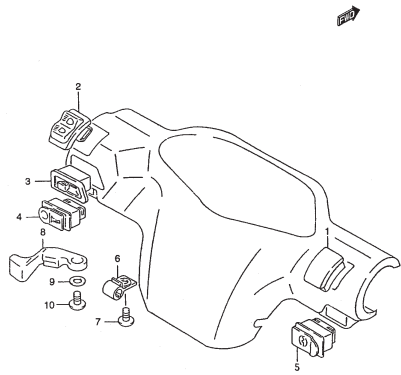


FIG. 25

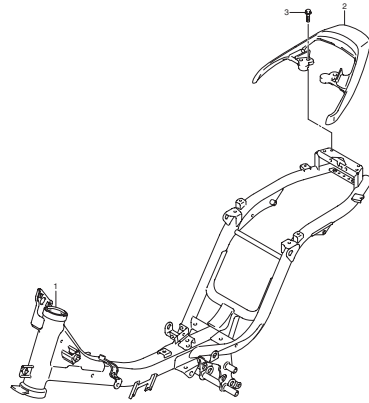


FIG. 26

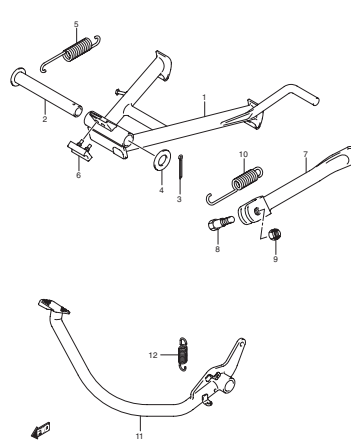


FIG. 27

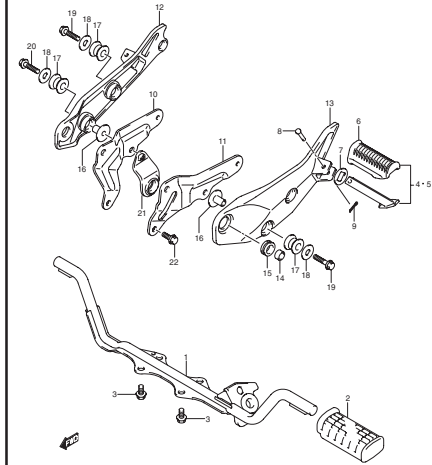


FIG. 28

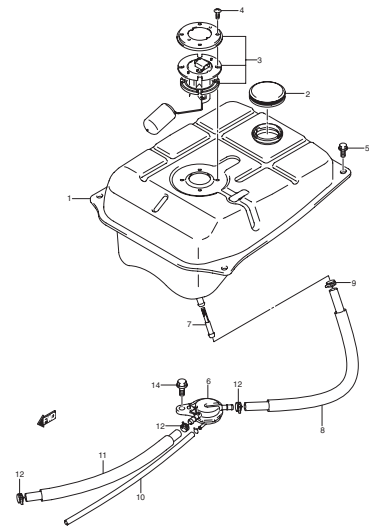


FIG. 29

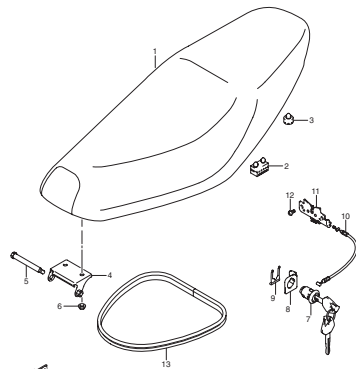


FIG. 30

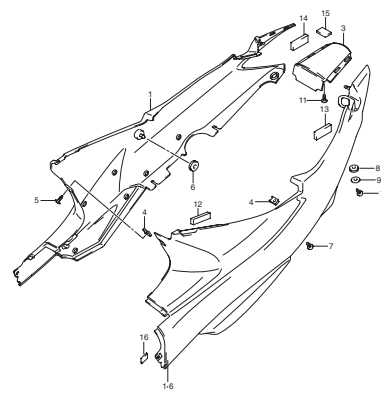
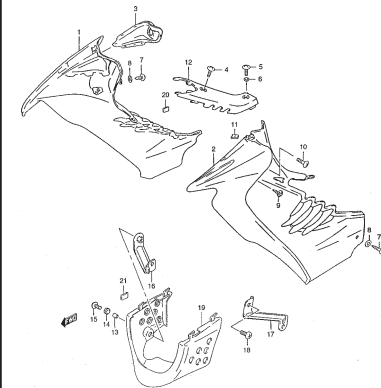


FIG. 31





1

FIG. 32

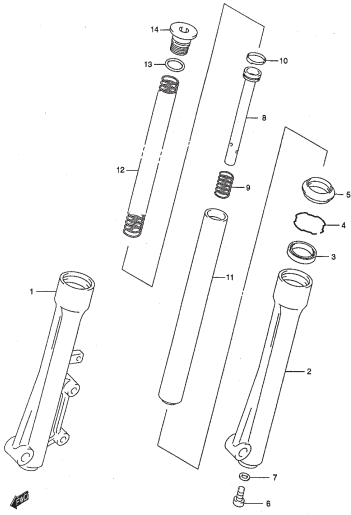


FIG. 33

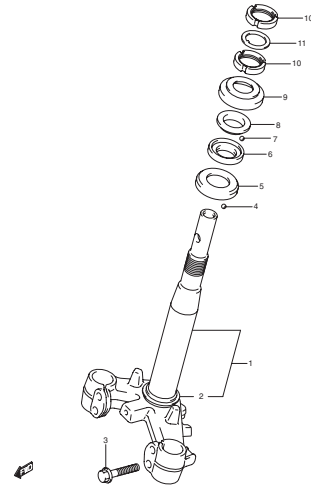


FIG. 34

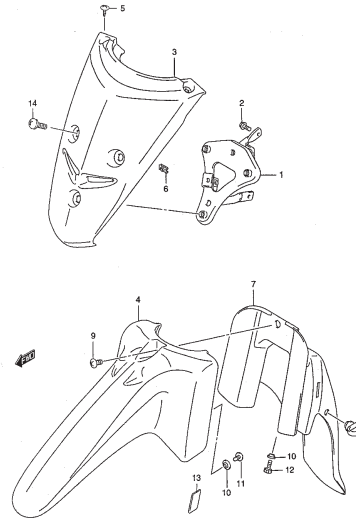


FIG. 35

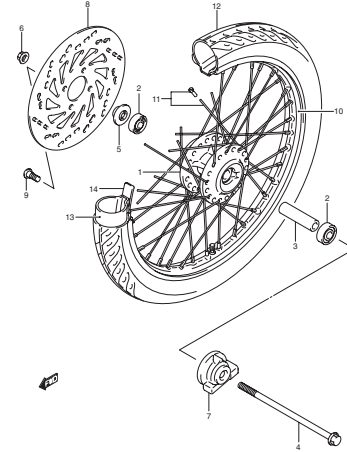


FIG. 36

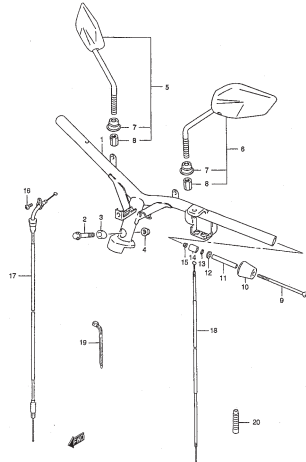


FIG. 37

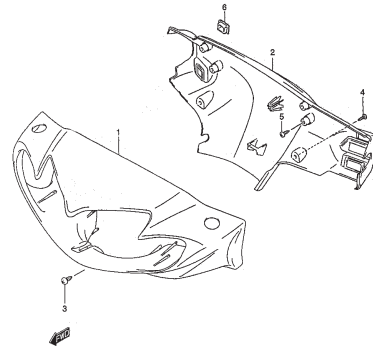


FIG. 38

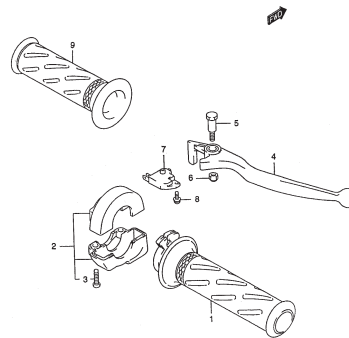
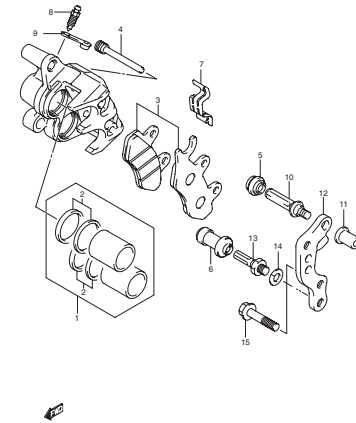


FIG. 39





1

FIG. 40

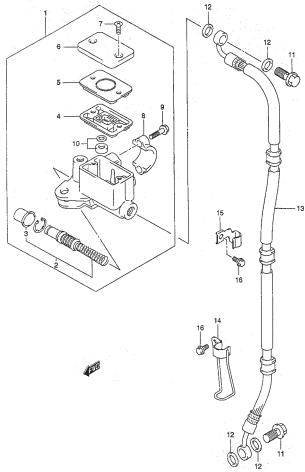


FIG. 41

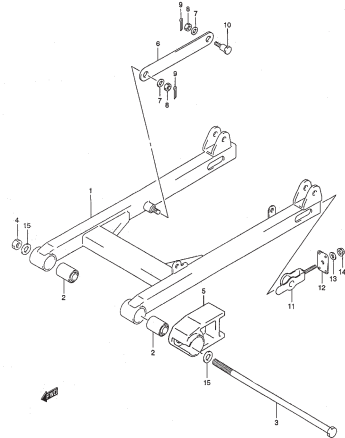


FIG. 42

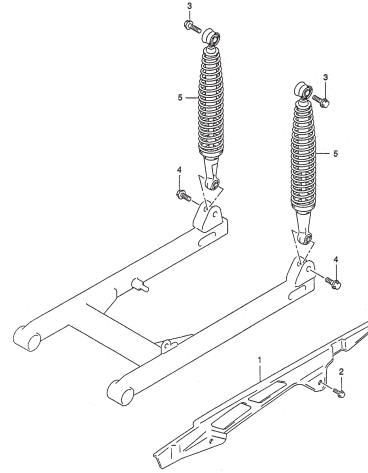


FIG. 43

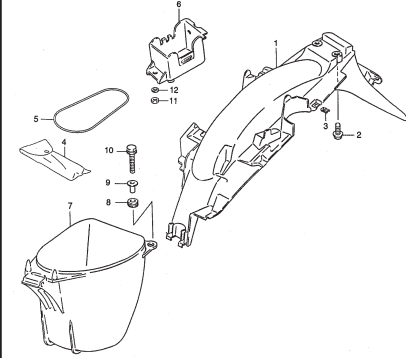


FIG. 44

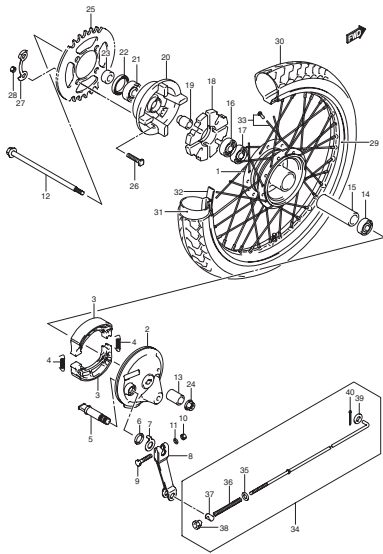


FIG. 1

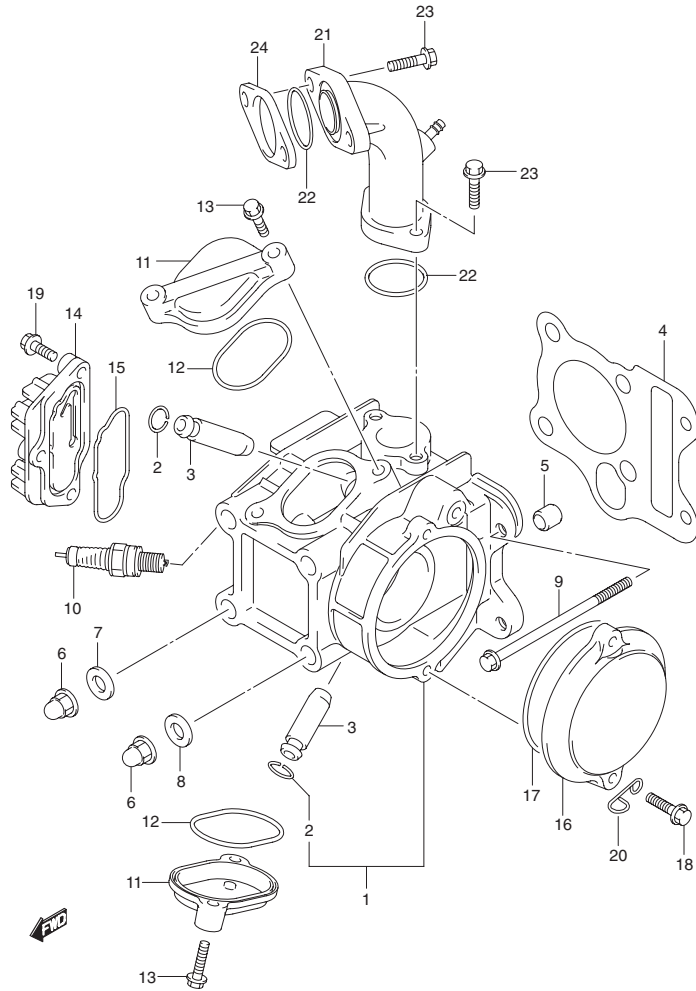


Fig. 1 CYLINDER HEAD

REF. NO.	PART NO.	DESCRIPTION	QTY	REMARKS
1	11110-20G4-000	HEAD, CYLINDER	1	
2	09381-10004-000	RING, VALVE GUIDE	2	
3	11115-09G10-000	GUIDE, VALVE	2	
4	11141-20G00-000	GASKET, CYLINDER HEAD	1	
5	04211-11129-000	PIN, CYLINDER KNOCK	2	
6	09159-08049-000	NUT, CYLINDER HEAD	4	
7	09168-08021-000	GASKET, CYLINDER HEAD NUT	2	
8	09160-08121-000	WASHER, CYLINDER HEAD	2	
9	09103-06501-000	BOLT, CYLINDER HEAD (L100)	2	
10	09482M00568-000	SPARK PLUG (NGK,C6HSA)	1	
11	11175-09400-000	CAP, INSPECTION	2	
12	09280-50007-000	O-RING, INSPECTION CAP	2	
13	01547-06203-000	BOLT, INSPECTION CAP	4	
14	11134-09G00-000	COVER, CYLINDER HEAD (RH)	1	
15	11144-09G00-000	O-RING, HEAD COVER (RH)	1	
16	11121-23F01-000	COVER, CYLINDER HEAD (LH)	1	
17	09280-84002-000	O-RING, CYLINDER HEAD (LH)	1	
18	01547-06203-000	BOLT, CYLINDER HEAD COVER (LH)	2	
19	01547-06253-000	BOLT, CYLINDER HEAD COVER (RH)	3	
20	13827-09G00-000	CLAMP, OVER FLOW HOSE	1	
21	13110-20G10-000	PIPE, INTAKE	1	
22	09280-26009-000	O-RING, INTAKE PIPE	2	
23	01547-06253-000	BOLT, INTAKE PIPE	4	
24	13129-20G00-000	INSULATOR, CARBURETOR	1	

2



FIG. 2

Fig. 2 CYLINDER

REF. NO.	PART NO.	DESCRIPTION	Q'TY	REMARKS
1	11210-20G10-000	CYLINDER	1	
2	09108-08265-000	STUD BOLT (L205)	4	
3	11241-20G00-000	GASKET, CYLINDER	1	
4	04211-11129-000	PIN	2	

2

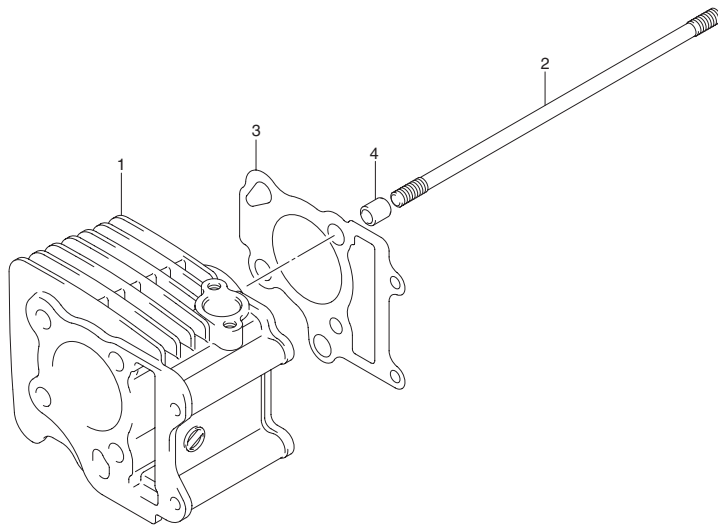


FIG. 3

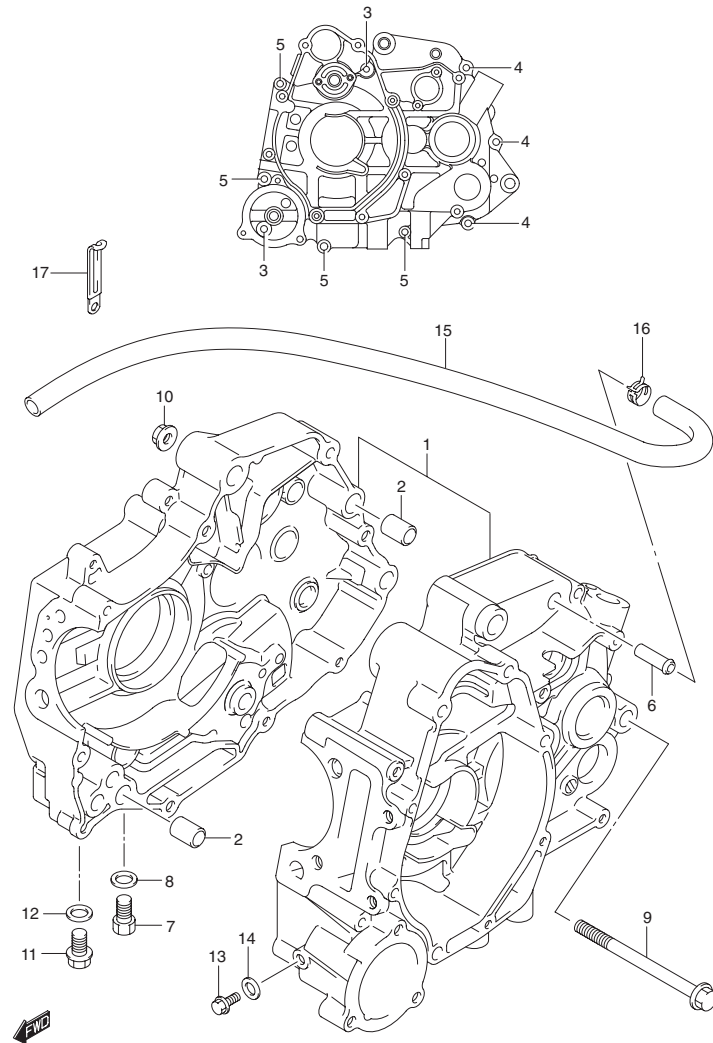


Fig. 3 CRANKCASE

REF. NO.	PART NO.	DESCRIPTION	QTY	REMARKS
1-1	11300-20840-000	CRANKCASE SET	1	FD125XSU
1-2	11300-20850-000	CRANKCASE SET	1	
2	04211-13189-000	PIN, CRANKCASE	2	
3	01547-06403-000	BOLT, CRANKCASE	2	
4	01547-06503-000	BOLT, CRANKCASE	3	
5	01547-06753-000	BOLT, CRANKCASE	4	
6	09364-08003T000	UNION, BREATHER HOSE	1	
7	01500-10163-000	PLUG, OIL DRAIN	1	
8	09168-10002-000	GASKET, OIL DRAIN	1	
9	09103-10110T000	BOLT, ENGINE MOUNTING (L100)	2	
10	08319-31103-000	NUT	2	
11	09247-10008T000	PLUG, OIL GALLERY	1	
12	09168-10002-000	GASKET, OIL GALLERY	1	
13	01547-06123-000	PLUG, OIL GALLERY	1	
14	09168-06004-000	GASKET, OIL GALLERY	1	
15	11332-20G00-000	HOSE, BREATHER	1	
16	09401-10409-000	CLIP, BREATHER HOSE	2	
17	09404-06431-000	CLAMP, BREATHER	1	

2

FIG. 4

Fig. 4 CRANKCASE COVER

REF. NO.	PART NO.	DESCRIPTION	QTY	REMARKS
1	11341-20G40-000	COVER, CLUTCH	1	
2	11482-20G00-000	GASKET, CLUTCH COVER	1	
3	04211-09149-000	PIN, CLUTCH COVER	2	
4	01547-06303-000	BOLT, CLUTCH COVER	7	
5	01547-06403-000	BOLT, CLUTCH COVER	2	
6	11971-09403-000	GAUGE, OIL LEVER	1	
7	09280-17003-000	O-RING, OIL LEVEL GAUGE	1	
8	01550-08123-000	PLUG, OIL CHECK	1	
9	09168-08015-000	GASKET, OIL CHECK PLUG	1	
10	11383-20GA0-000	CAP, CLUTCH COVER	1	
11	02142-05083-000	SCREW, CAP CLUTCH COVER	2	
12	11351-20G30-000	COVER, MAGNETO	1	
13	11483-20G00-000	GASKET, MAGNETO COVER	1	
14	04211-09149-000	PIN, MAGNETO COVER	2	
15	01547-06203-000	BOLT, MAGNETO COVER	2	
16	01547-06303-000	BOLT, MAGNETO COVER	3	
17	01547-06403-000	BOLT, MAGNETO COVER	1	
18	01547-06603-000	BOLT, MAGNETO COVER	2	
19	09247-12102-000	PLUG, TOP	1	
20	09168-12002-000	GASKET, TOP PLUG	1	
21	09259-26015-000	PLUG, HOLE	1	
22	09280-22008-000	O-RING	1	
23	11361-23FA0-000	COVER, ENGINE SPROCKET	1	
24	01547-06303-000	BOLT, ENGINE SPROCKET	2	

2

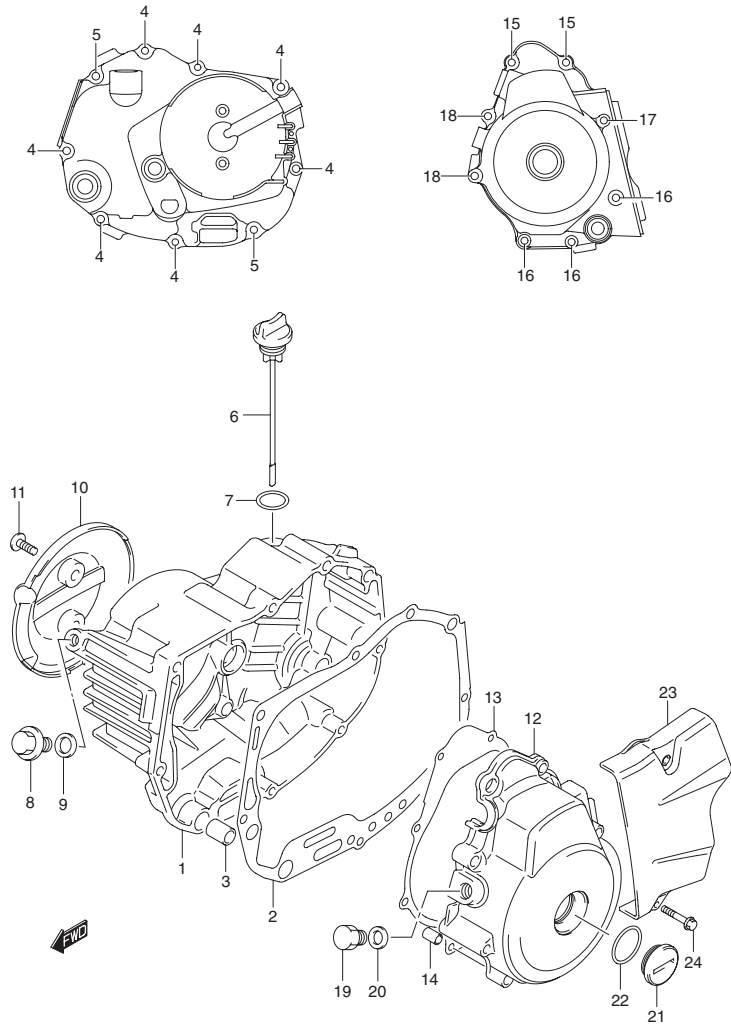


FIG. 5

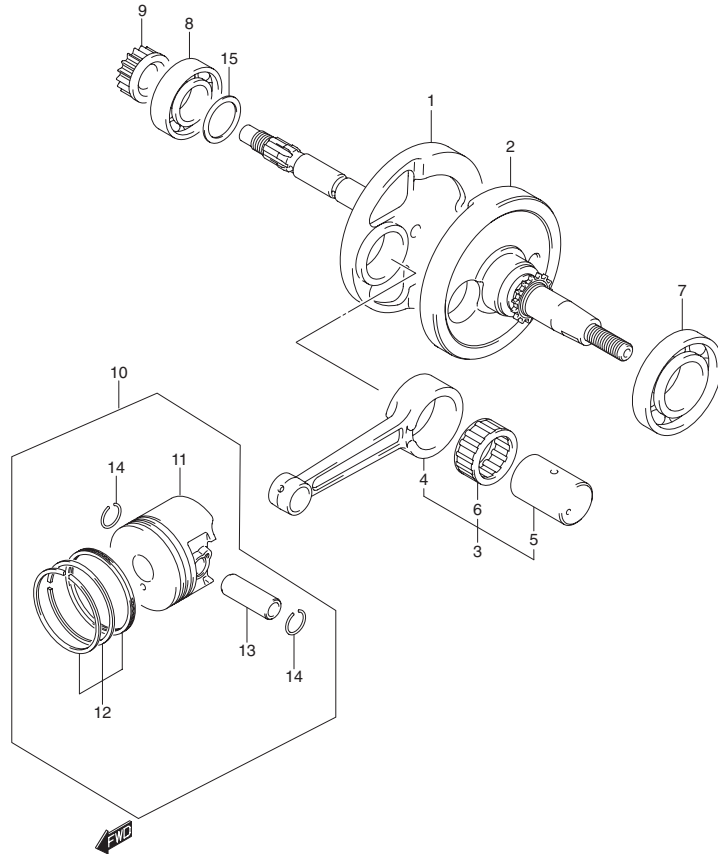


Fig. 5 CRANKSHAFT

REF. NO.	PART NO.	DESCRIPTION	QTY	REMARKS
1	12221-20G00-000	CRANKSHAFT, RH	1	
2-1	12261-20G00-000	CRANKSHAFT, LH	1	FD125XSU
2-2	12261-20G10-000	CRANKSHAFT, LH	1	
3	12160-20820-000	CONNROD SET	1	OPT
4	12161-20G00-0C0	ROD, CONNECTING	1	
5	12211-20G00-000	PIN, CRANK	1	
6	09263-28034-0B0	BEARING, CRANK PIN	1	
7	09262-35063-000	BEARING, LH	1	
8	09262-25122-000	BEARING, MIDDLE	1	
9	16321-23F00-000	GEAR, OIL PUMP DRIVE	1	
10-1	12100-20G10-000	PISTON SET (STD)	1	
10-2	12100-20G10-050	PISTON SET (OS:0.5)	1	OPT
10-3	12100-20G10-100	PISTON SET (OS:1.0)	1	OPT
11-1	12111-20G10-000	PISTON (STD)	1	
11-2	12111-20G10-050	PISTON (OS:0.5)	1	OPT
11-3	12111-20G10-100	PISTON (OS:1.0)	1	OPT
12-1	12140-20G20-000	RING SET, PISTON (STD)	1	
12-2	12140-20G20-050	RING SET, PISTON (OS:0.5)	1	OPT
12-3	12140-20G20-100	RING SET, PISTON (OS:1.0)	1	OPT
13	12151-20G00-000	PIN, PISTON	1	
14	09381-14001-000	CIRCLIP	2	
15-1	09181-25051-000	SHIM (T:0.60)	1	
15-2	09181-25052-000	SHIM (T:0.65)	1	
15-3	09181-25053-000	SHIM (T:0.70)	1	
15-4	09181-25054-000	SHIM (T:0.75)	1	
15-5	09181-25055-000	SHIM (T:0.80)	1	
15-6	09181-25056-000	SHIM (T:0.85)	1	
15-7	09181-25057-000	SHIM (T:0.90)	1	
15-8	09181-25058-000	SHIM (T:0.95)	1	
15-9	09181-25059-000	SHIM (T:1.00)	1	
15-10	09181-25060	SHIM (T:1.05)	1	
15-11	09181-25061	SHIM (T:1.10)	1	
15-12	09181-25062	SHIM (T:1.15)	1	
15-13	09181-25063	SHIM (T:1.20)	1	
15-14	09181-25179	SHIM (T:1.25)	1	
15-15	09181-25181	SHIM (T:1.30)	1	

2

FIG. 5A

Fig. 5A STARTER CLUTCH (110XDU ELECTRIC START)

REF. NO.	PART NO.	DESCRIPTION	QTY	REMARKS
1	12611-20G00-000	GEAR, STARTER IDLE	1	
2	12612-23F00-000	SHAFT, STARTER IDLE GEAR	1	
3	02122-06163-000	SCREW, STARTER IDLE SHAFT	2	
4	09160-13010-000	WASHER, STARTER IDLE GEAR	1	
5	08331-31139-000	CIRCLIP, STARTER IDLE GEAR	1	
6	12601-20G00T000	GEAR, STARTER CLUTCH	1	
7	09263-20061-000	BEARING, STARTER CLUTCH GEAR	1	
8	12614-05F10-000	CLUTCH, STARTER ONE WAY	1	
9	07130-06163-000	BOLT, STARTER CLUTCH	3	

2

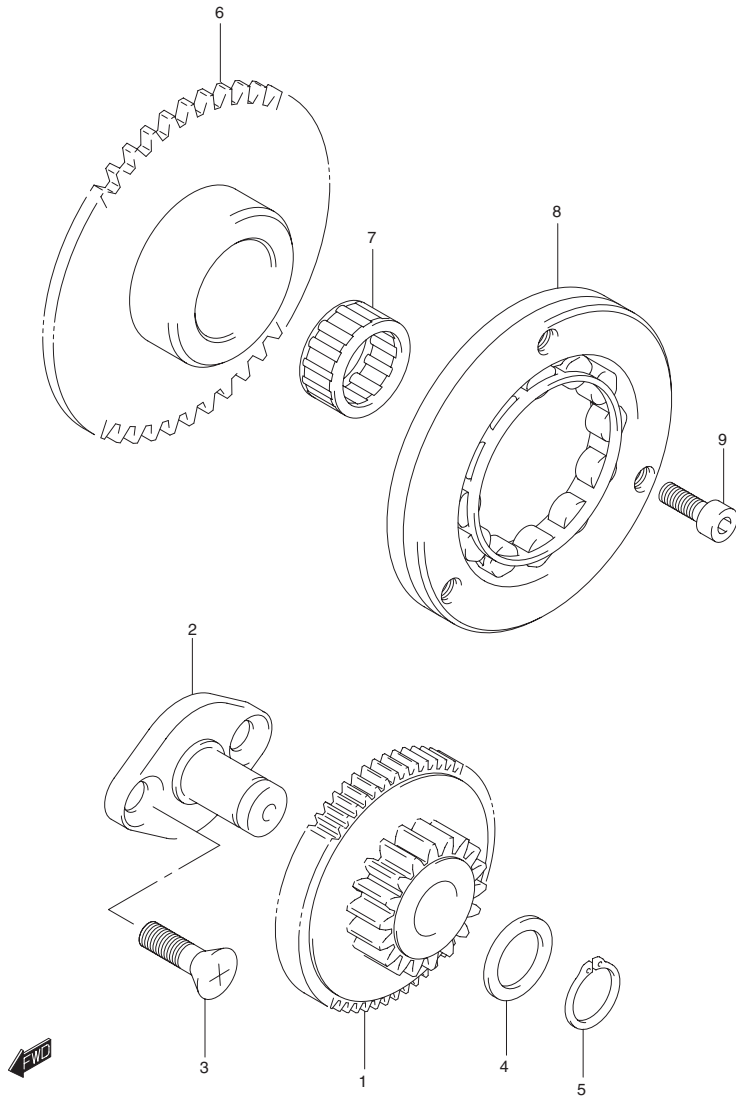


FIG. 6

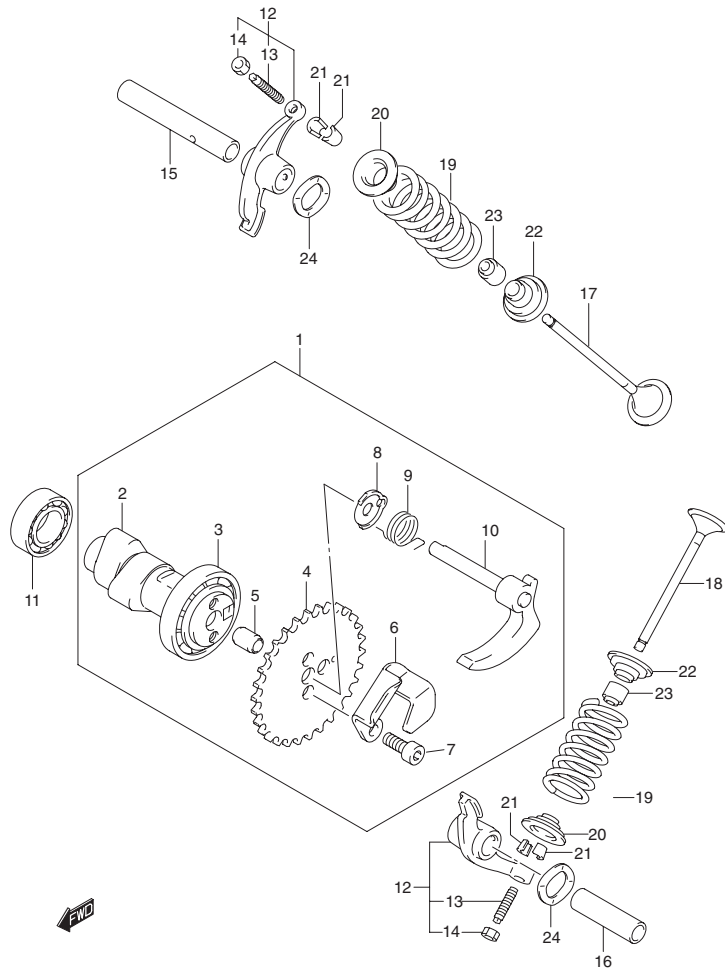


Fig. 6 CAM SHAFT/VALVE

REF. NO.	PART NO.	DESCRIPTION	QTY	REMARKS
1	12710-20G00-000	CAMSHAFT SET	1	
2	12711-20G00-000	CAMSHAFT	1	
3	08113-69050-000	BEARING, CAM SHAFT LH	1	
4	12741-20G00-000	SPROCKET, CAM SHAFT	1	
5	09206-08008-000	PIN, SPROCKET KNOCK	1	
6	12954-09G10-000	STOPPER	1	
7	09106-05028T000	BOLT, SPROCKET CAM	2	
8	12955-20G00-000	WASHER, DECOMP SHAFT	1	
9	12725-20G00-000	SPRING, DECOMP CAM	1	
10	12951-20G00-000	SHAFT, DECOMP CAM	1	
11	09262-15026-000	BEARING, CAM SHAFT RH	1	
12	12840-20G10-000	ARM, VALVE ROCKER	2	
13	12842-49201-000	SCREW, ADJUSTING	2	
14	12843-27A00-000	NUT, ADJUSTING	2	
15	12861-09D00-000	SHAFT, ROCKER ARM INTAKE	1	
16	12871-30A00-000	SHAFT, ROCKER ARM EXHAUST	1	
17	12911-09G20-000	VALVE, INTAKE	1	
18	12912-20G20-000	VALVE, EXHAUST	1	
19	12921-20G00-000	SPRING, VALVE	2	
20	12931-09G00-000	RETAINER, VALVE SPRING	2	
21	12932-09G00-000	COTTER, VALVE	4	
22	12933-09G00-000	SEAT, SPRING	2	
23	09289-05008-000	OIL SEAL	2	
24	09164-10012-000	WASHER, ROCKER ARM	2	

2

FIG. 7

Fig. 7 CAM CHAIN

REF. NO.	PART NO.	DESCRIPTION	QTY	REMARKS
1	12760-20G00-000	CHAIN, CAM SHAFT DRIVE	1	
2	12771-20G00-000	GUIDE, CAM CHAIN	1	
3	12811-09G00-000	TENSIONER, CAM CHAIN	1	
4	09103-06247-000	BOLT, CAM CHAIN TENSIONER	1	
5	09168-06004-000	WASHER, TENSINER ADJUSTER	1	
6	12830-09G00-000	ADJUSTER ASSY, TENSIONER	1	
7	12837-20G00-000	GASKET, TENSIONER ADJUSTER	1	
8	01547-06203-000	BOLT	2	

2

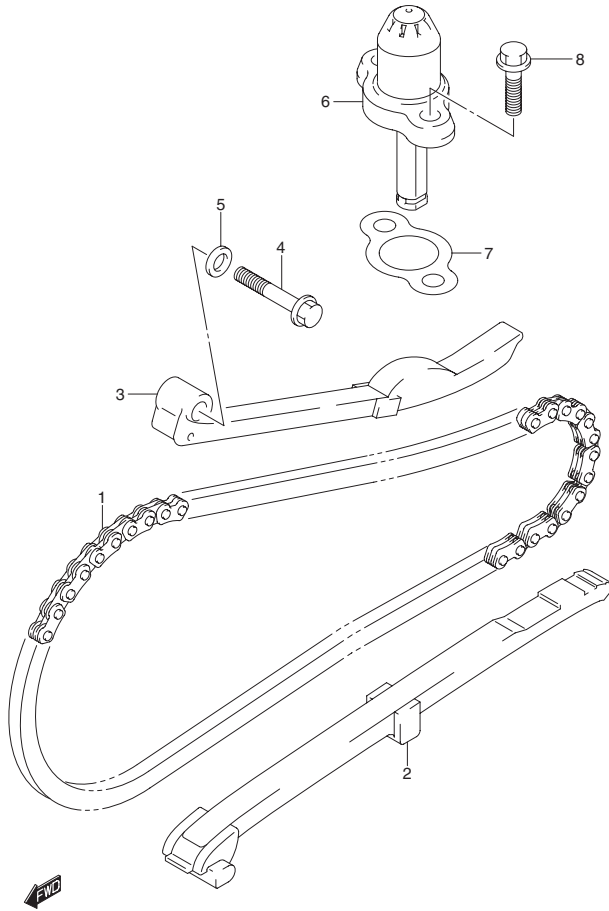


FIG. 8

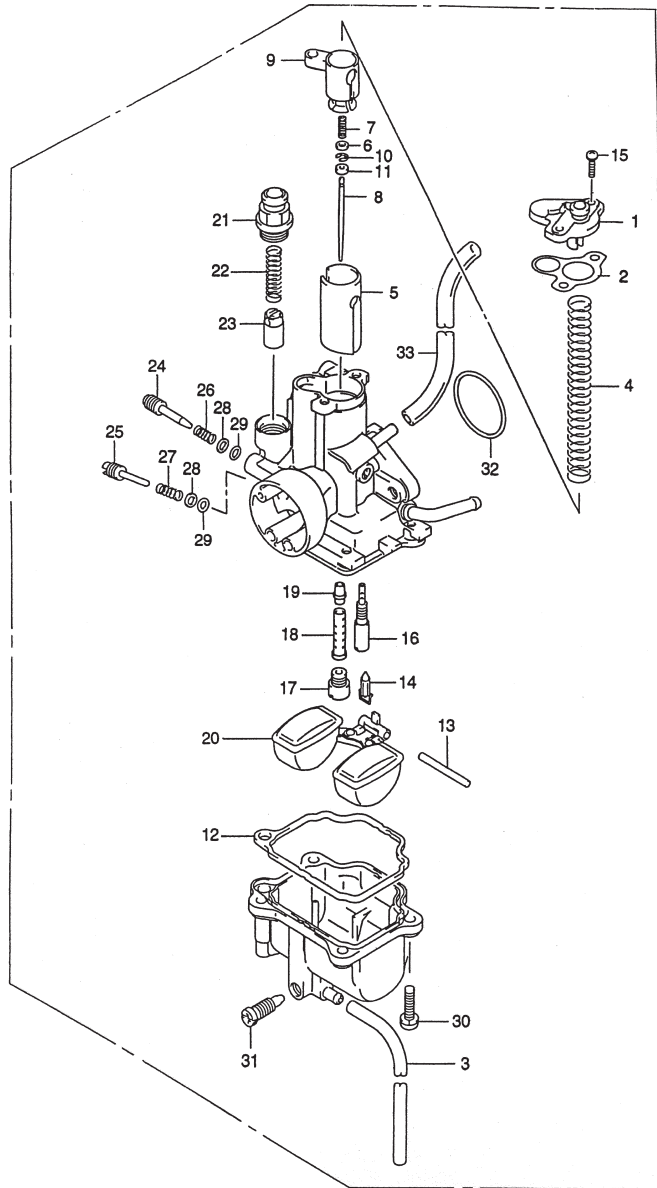


Fig. 8 CARBURETOR

REF. NO.	PART NO.	DESCRIPTION	QTY	REMARKS
	13200-20G70-000	CARBURETOR	1	
1	13261-09G20-000	CAP ASSY, TOP	1	
2	13249-30A10-000	GASKET	1	
3	13683-34A10-000	HOSE	1	
4	13573-20G20-000	SPRING	1	
5	13551-20G20-000	PISTON, VALVE	1	
6	13382-23F00-000	WASHER	1	
7	13481-23F00-000	SPRING	1	
8	13383-20G20-000	JET, NEEDLE (4HP51)	1	
9	13418-12F40-000	HOLDER	1	
10	13533-98410-000	E-RING	1	
11	13387-23F00-000	RING	1	
12	13258-30A00-000	PACKING	1	
13	13254-20010-000	PIN	1	
14	13372-09G10-000	NEEDLE ASSY	1	
15	13601-04128-000	SCREW	2	
16	09492-12003-000	PILOT, JET (12.5)	1	
17	09491-97009-000	MAIN, JET, (97.5)	1	
18	13385-09G10-000	PIPE	1	
19	13341-20G00-000	NEEDLE, jet (D-8)	1	
20	13250-30D00-000	FLOAT ASSY	1	
21	13418-43410-000	GUIDE, HOLDER	1	
22	13417-01010-000	SPRING	1	
23	13411-01010-000	PLUNGER ASSY	1	
24	13267-09G20-000	ADJUSTER	1	
25	13267-20G00-000	ADJUSTER, SCREW	1	
26	13268-35010-000	SPRING	1	
27	13268-09G20-000	SPRING	1	
28	13291-29900-000	WASHER	2	
29	13295-29900-000	O-RING	2	
30	13601-04148-000	SCREW	4	
31	13247-25G00-000	SCREW, DRAIN	1	
32	13278-29C50-000	O-RING	1	
33	13684-09400-000	HOSE	1	

2

FIG. 9

FIG. 9 AIR CLEANER

REF. NO.	PART NO.	DESCRIPTION	QTY	REMARKS
1	13700-20G30-000	CLEANER ASSY, AIR	1	
2	13741-20G00-000	CAP, AIR CLEANER	1	
3	13780-09G00-000	FILTER COMP, AIR CLEANER	1	
4	13871-09G00-000	PLUG, DRAIN	2	
5	13824-18910-000	CLIP, PLUG DRAIN	2	
6	13881-09G30-000	TUBE, OUTLET	1	
7	13826-09G30-000	CLAMP	1	
8	03541-05203-000	SCREW	4	
9	09136-06017-000	SCREW, AIR CLEANER	2	

2

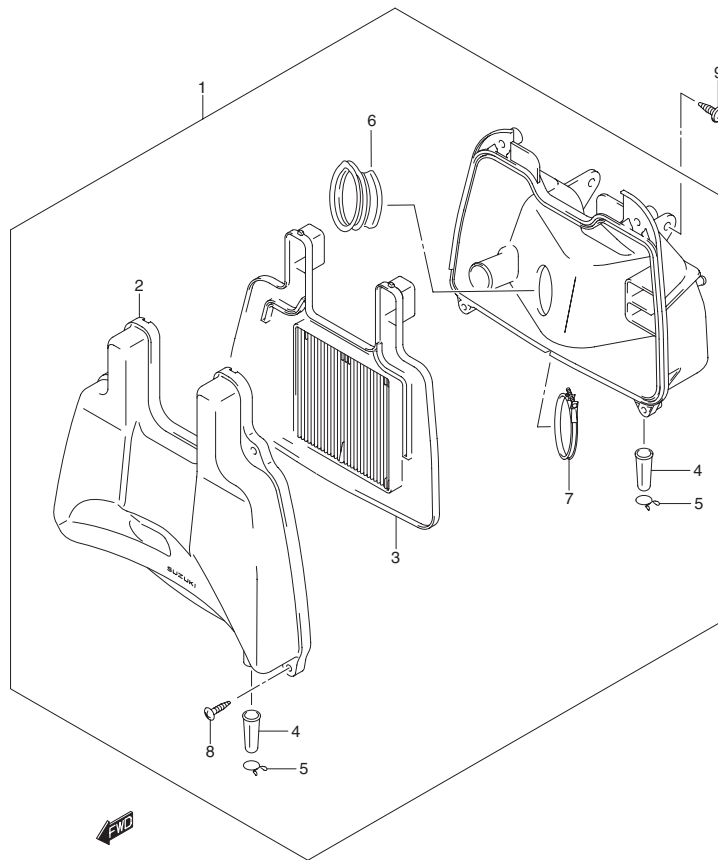


FIG. 10

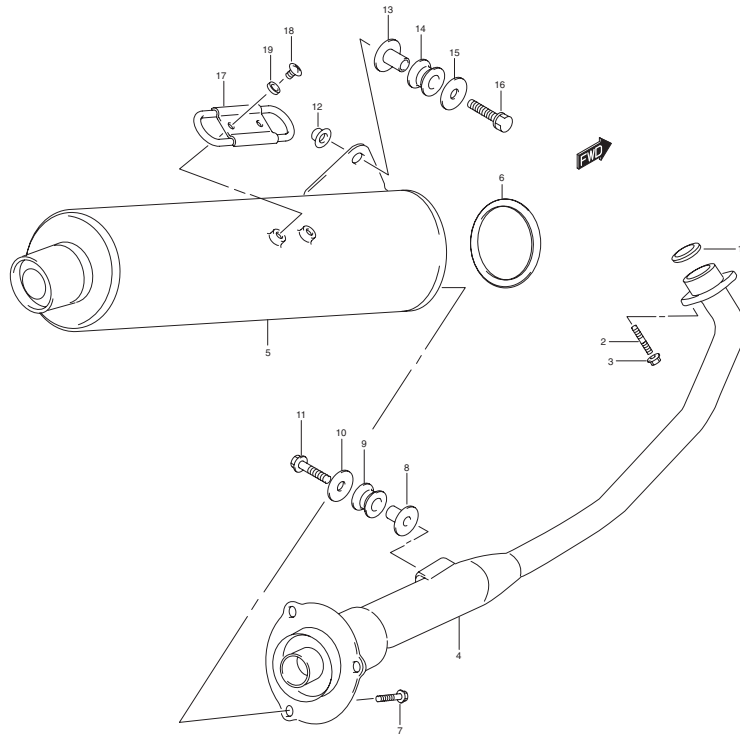


FIG. 10 MUFFLER

REF. NO.	PART NO.	DESCRIPTION	QTY	REMARKS
1	14181-09D00-000	GASKET, EXHAUST PIPE	1	
2	01421-06208-000	BOLT STUD	2	
3	08316-10063-000	NUT, EXHAUST PIPE	2	
4	14150-20G20-000	PIPE, EXHAUST	1	
5	14310-20G20-000	MUFFLER ASSY	1	
6	14181-25G00-000	GASKET, MUFFLER JOINT	1	
7	01550-06203-000	BOLT, MUFFLER JOINT	3	
8	09180-08212-000	SPACER, MUFFLER PIPE EXHAUST	1	
9	09320-12048-000	CUSHION, MUFFLER PIPE EXHAUST	1	
10	09160-08149-000	WASHER, MUFFLER PIPE EXHAUST	1	
11	43652-23F00T000	BOLT, MUFFLER SUPPORT	1	
12	08316-10083-000	NUT, MUFFLER SUPPORT	1	
13	09180-08151T000	SPACER, MUFFLER SUPPORT	1	
14	09320-12026-000	CUSHION, MUFFLER SUPPORT	1	
15	09160-08032T000	WASHER, MUFFLER SUPPORT	1	
16	43650-23F00T000	BOLT, MUFFLER SUPPORT LOWER	1	
17	14780-23FA0-000	COVER, MUFFLER	1	
18	14783-23FA0-000	SCREW, MUFFLER	2	
19	09160-06129-000	WASHER, MUFFLER COVER	2	

2

FIG. 11

FIG. 11 OIL PUMP

REF. NO.	PART NO.	DESCRIPTION	QTY	REMARKS
1	16400-09G20-000	PUMP ASSY, ENGINE OIL	1	
2	16331-09G00-000	GEAR, OIL PUMP DRIVEN	1	
3	09261-02008-000	PIN, OIL PUMP	1	
4	08211-08141-000	WASHER	1	
5	08332-11066-000	E-RING	1	
6	01547-06303-000	BOLT, OIL PUMP	3	
7	04211-09129-000	PIN, OIL PUMP	2	
8	16520-09402-000	STRAINER, ENGINE OIL	1	
9	16510-05240-000	FILTER, ENGINE OIL	1	
10	16512-09G00-000	CAP, OIL FILTER	1	
11	01547-06163-000	BOLT, OIL FILTER CAP	3	
12	09280-54001-000	O-RING, OIL FILTER CAP	1	
13	09280-13007-000	O-RING, OIL FILTER	1	
14	16519-09G00-000	SPRING, OIL FILTER	1	

2

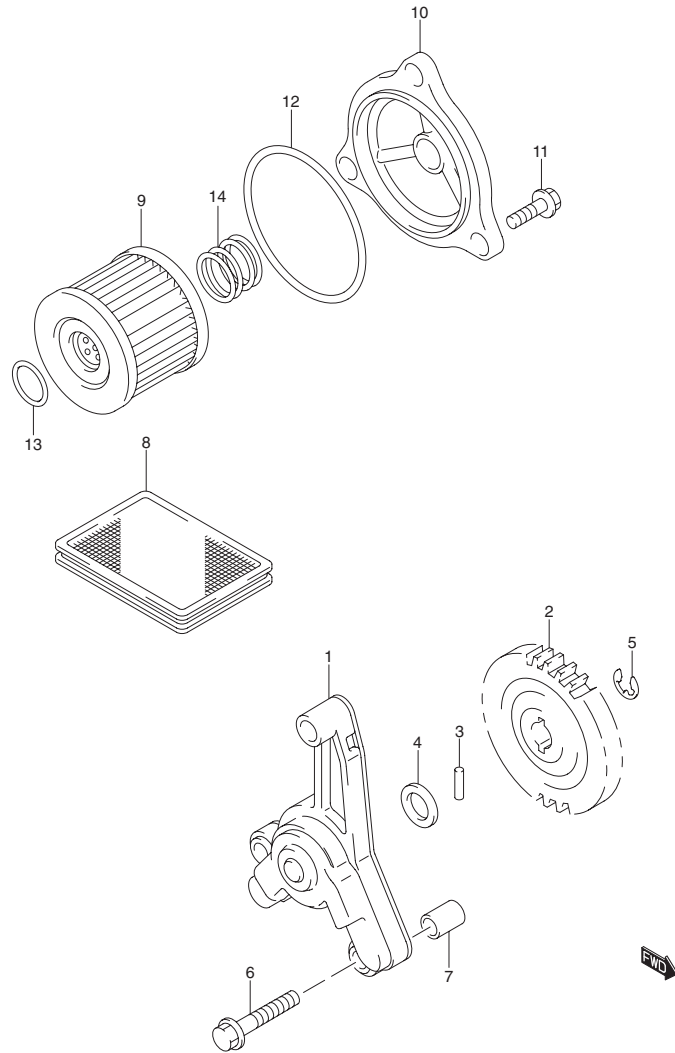


FIG. 12

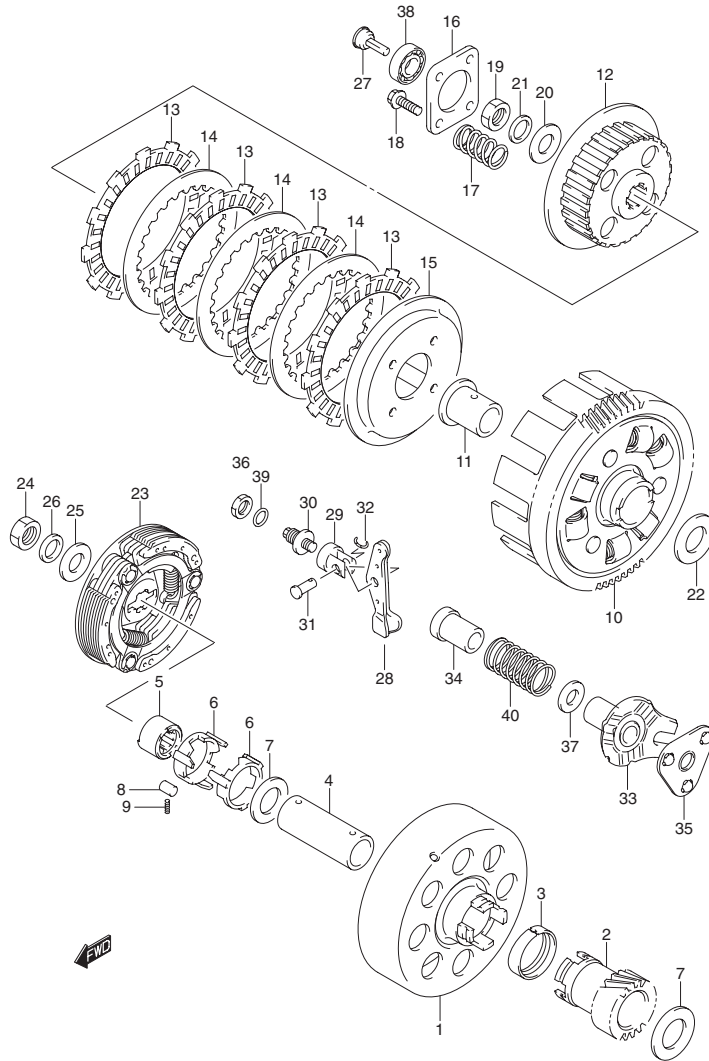


FIG.12 CLUTCH

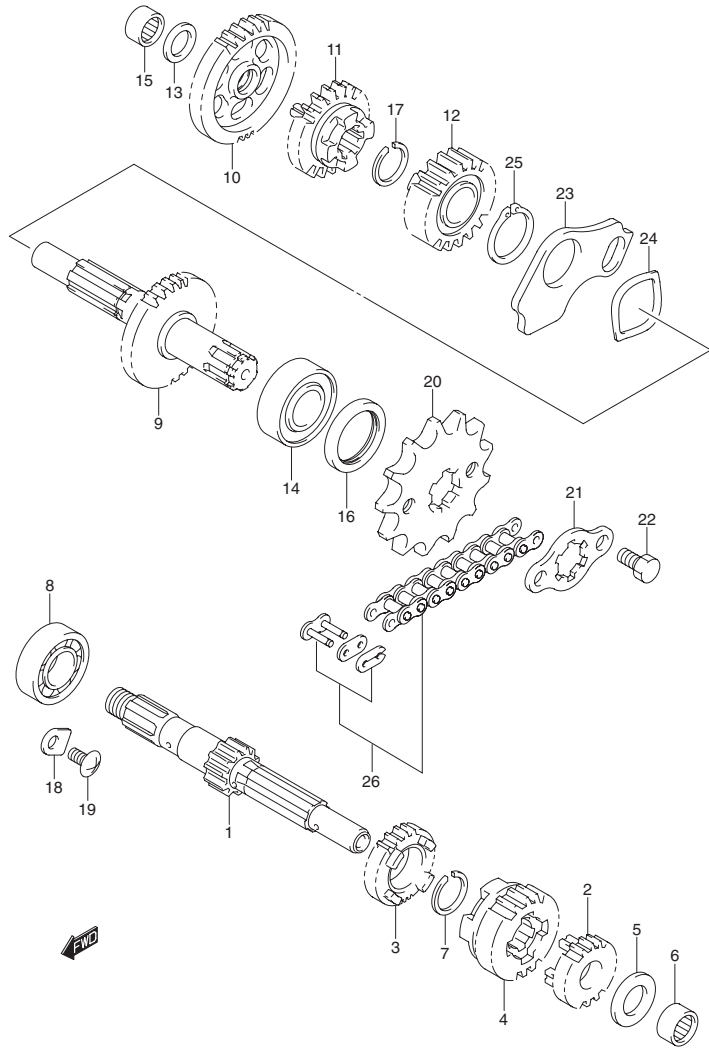
REF. NO.	PART NO.	DESCRIPTION	QTY	REMARKS
1	21102-09G00-000	HOUSING, CLUTCH 1ST	1	
2	21111-20G30-000	GEAR, PRIMARY DRIVE	1	
3	21114-23F00-000	RING, PRIMARY DRIVE GEAR	1	
4	21119-23F20-000	SPACER, PRIMARY DRIVE	1	
5	21631-21D02-000	RACE, ONE WAY CLUTCH	1	
6	21652-23F00-000	RETAINER, ONE WAY CLUTCH	2	
7	09181-18002-000	WASHER, PRIMARY DRIVE GEAR	2	
8	09261-07006-000	ROLLER, ONE WAY CLUTCH	3	
9	09440-02002-000	SPRING, ONE WAY CLUTCH	3	
10	21200-20G10-000	GEAR ASSY, PRIMARY DRIVEN	1	
11	21251-23F20-000	SPACER, PRIMARY DRIVEN GEAR	1	
12	21411-20G00-000	HUB, CLUTCH SLEEVE	1	
13	21441-23F00-000	PLATE, CLUTCH DRIVE	4	
14	21451-21D40-000	PLATE, CLUTCH DRIVEN	3	
15	21461-09G00-000	DISK, CLUTCH PRESSURE	1	
16	21465-09G00-000	PLATE, RELEASE	1	
17	09440-18031-000	SPRING, CLUTCH	4	
18	21482-09G00-000	BOLT, CLUTCH SPRING	4	
19	09140-14022-000	NUT, CLUTCH SLEEVE HUB	1	
20	09160-14005-000	WASHER, CLUTCH SLEEVE HUB	1	
21	09164-14011-000	WASHER, CLUTCH SLEEVE WAVE	1	
22	09181-17018-000	WASHER, PRIMARY DRIVEN GEAR	1	
23	21501-20G10-P14	CLUTCH ASSY, SHOE	1	
24	09140-14022-000	NUT, SHOE CLUTCH	1	
25	09160-14005-000	WASHER, SHOE CLUTCH	1	
26	09164-14011-000	WASHER, SHOE CLUTCH WAVE	1	
27	23121-09G00-000	PIECE, CLUTCH PUSH	1	
28	23221-23F00-000	ARM, CLUTCH RELEASE	1	
29	23222-21D10-000	BOSS, CLUTCH RELEASE ARM	1	
30	23223-23F00-000	BOLT, CLUTCH RELEASE ADJUST	1	
31	09208-07005-000	PIN, CLUTCH RELEASE ARM	1	
32	08332-11059-000	E-RING, CLUTCH RELEASE	1	
33	23230-20G00-000	GUIDE, RELEASE BALL OUTER	1	
34	23234-23F00-000	SPACER, RELEASE ARM	1	
35	23250-20G00-000	BALL, CLUTCH RELEASE	1	
36	09140-12046-000	NUT, CLUTCH RELEASE ADJUST	1	
37	09160-10085-000	WASHER, RELEASE ARM	1	
38	09262-15032-000	BEARING, PUSH PIECE THRUST	1	
39	09280-12004-000	O-RING	1	
40	09440-19025-000	SPRING, RELEASE ARM	1	

3

FIG. 13

FIG.13 TRANSMISSION

REF. NO.	PART NO.	DESCRIPTION	QTY	REMARKS
1	24120-20G00-000	SHAFT COMP, COUNTER	1	
2	24221-20G00-000	GEAR, 2ND DRIVE	1	
3	24231-20G00-000	GEAR, 3RD DRIVE	1	
4	24241-20G00-000	GEAR, 4TH DRIVE	1	
5	09160-13006-000	WASHER, 2ND DRIVE	1	
6	09263-13003-000	BEARING, COUNTER LH	1	
7	09380-17007-000	CIRCLIP, 3RD DRIVE	1	
8	08110-62030-000	BEARING, COUNTER RH	1	
9	24130-20G00-000	SHAFT COMP, DRIVE	1	
10	24311-20G00-000	GEAR, 1ST DRIVEN	1	
11	24331-20G00-000	GEAR, 3RD DRIVEN	1	
12	24341-20G00-000	GEAR, 4TH DRIVEN	1	
13	09160-13006-000	WASHER, 1ST DRIVEN	1	
14	08110-62030-000	BEARING, DRIVE SHAFT LH	1	
15	09263-13003-000	BEARING, DRIVE SHAFT RH	1	
16	09283-17025-000	SEAL, DRIVE SHAFT	1	
17	09380-17007-000	CIRCLIP, 4TH DRIVEN	1	
18	24741-20A10-000	RETAINER, COUNTERSHAFT	1	
19	02142-06123-000	SCREW, COUNTER SHAFT	1	
20	27511-09G00-000	SPROCKET, ENGINE (NT:14)	1	
21	27512-09G00-000	PLATE, ENGINE SPROCKET	1	
22	01500-06103-000	BOLT, ENGINE SPROCKET PLATE	2	
23	25361-23F00-000	PLATE, ROTARY STOP	1	
24	09164-25003-000	WASHER, ROTARY WAVE	1	
25	08331-31259-000	CIRCLIP	1	
26	27600-20910-100	CHAIN ASSY, DRIVE (100L)	1	



3



FIG. 14

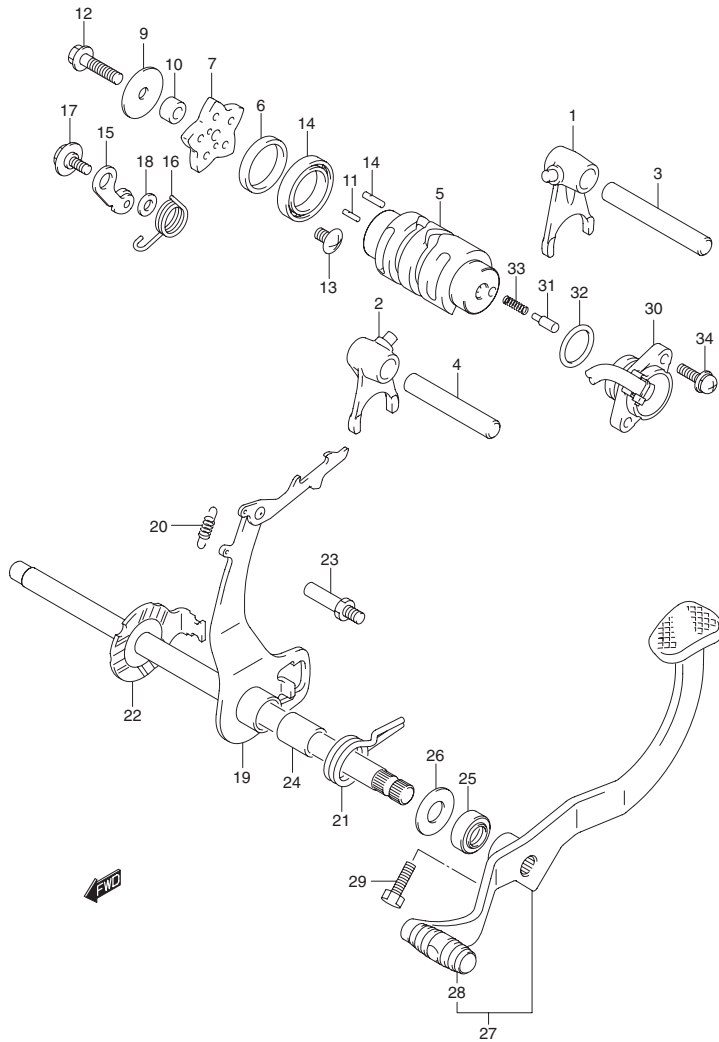


FIG.14 GEAR SHIFTING

REF. NO.	PART NO.	DESCRIPTION	QTY	REMARKS
1	25211-23F10-000	FORK, GEAR SHIFT NO.1	1	
2	25221-23F10-000	FORK, GEAR SHIFT NO.2	1	
3	25411-13A10-000	SHAFT, SHIFT FORK NO.1	1	
4	25421-35420-000	SHAFT, SHIFT FORK NO.2	1	
5	25311-20G00-000	CAM, GEAR SHIFT	1	
6	25312-20G00-000	SPACER, GEAR SHIFT CAM	1	
7	25381-20G00-000	PLATE, SHIFT CAM STOPPER	1	
8	09261-04012-000	PIN, SHIFT CAM	5	
9	09160-06030-000	STOPPER, SHIFT CAM PIN	1	
10	09180-06010-000	SPACER, PIN STOPPER PLATE	1	
11	09261-03002-000	PIN, CAM STOPPER PLATE	2	
12	01547-06253-000	BOLT, SHIFT CAM PIN	1	
13	02142-06103-000	SCREW, GEAR SHIFT CAM	1	
14	08110-68050-000	BEARING, GEAR SHIFT	1	
15	25350-20G00T00	STOPPER, SHIFT CAM	1	
16	25355-20G10-000	SPRING, SHIFT CAM	1	
17	09111-06041-000	BOLT, SHIFT CAM	1	
18	08211-06121-000	WASHER, SHIFT CAM	1	
19	25520-20G01-000	ARM COMP, GEAR SHIFT	1	
20	09443-05019-000	SPRING, GEAR SHIFT PAWL	1	
21	09444-26027-000	SPRING, SHIFT ARM RETURN	1	
22	25510-20G00-000	SHAFT COMP, GEAR SHIFT	1	
23	25671-20G00-000	STOPPER, SHIFT ARM	1	
24	09180-12152-000	SPACER, SHIFT ARM	1	
25	09285-12002-000	SEAL, SHIFT SHAFT OIL	1	
26	08211-12261-000	WASHER, SHIFT SHAFT	1	
27	25600-23F20-000	LEVER ASSY, GEAR SHIFT	1	
28	25652-16500-000	RUBBER, GEAR SHIFT PEDAL	1	
29	01500-06203-000	BOLT, SHIFT LEVER	1	
30	37720-20G00-000	BASE ASSY, GEAR SHIFT	1	
31	09209-05011-000	CONTACT, GEAR POSITION	1	
32	09280-21008-000	O-RING, GEAR SHIFT	1	
33	09440-04010-000	SPRING, GEAR SHIFT	1	
34	02112-75163-000	SCREW, GEAR SHIFT	2	

3

FIG. 15

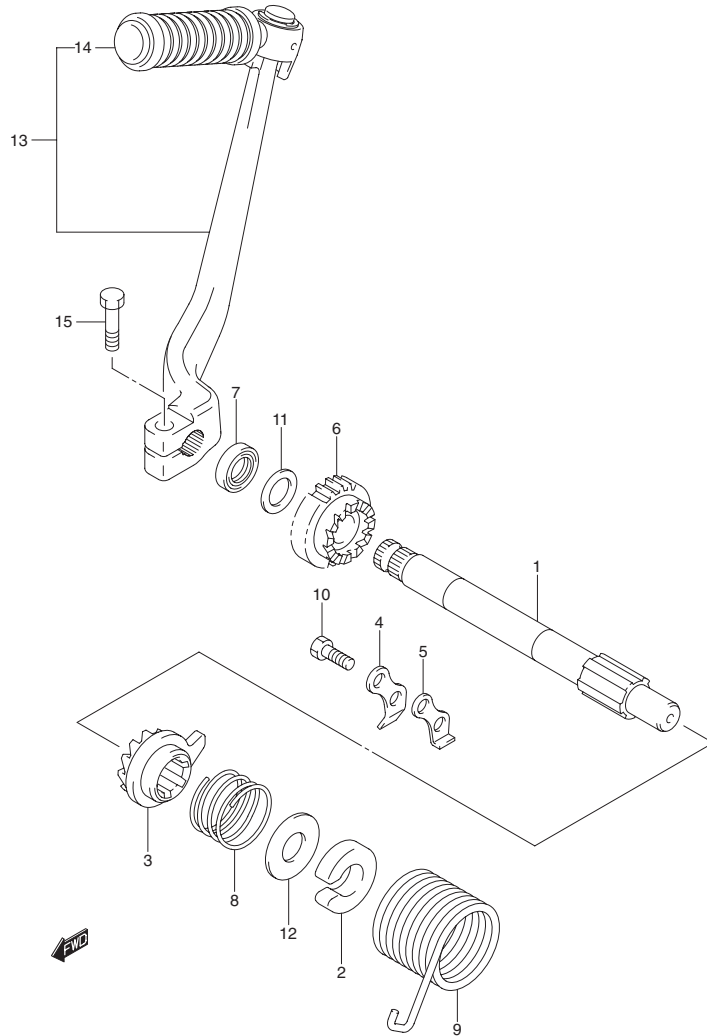


FIG.15 KICK STARTER

REF. NO.	PART NO.	DESCRIPTION	QTY	REMARKS
1	26211-23F00-000	SHAFT, KICK STARTER	1	
2	26221-30A00-000	GUIDE, KICK STARTER SPRING	1	
3	26231-09G00-000	STARTER, KICK	1	
4	26232-09401-000	GUIDE, KICK STARTER	1	
5	26233-09400-000	STOPPER, KICK STARTER	1	
6	26241-20G01-000	GEAR, KICK STARTER DRIVE	1	
7	09283-14009-000	SEAL, KICK STARTER	1	
8	09440-30007-000	SPRING, KICK STARTER	1	
9	09448-38004-000	SPRING, KICK SHAFT RETURN	1	
10	01500-06163-000	BOLT, KICK STARTER STOPPER	2	
11	09181-14167-000	WASHER, KICK DRIVE GEAR	1	
12	08211-14321-000	PLATE, KICK STARTER SPRING	1	
13	26300-09G10-000	LEVER ASSY, KICK STARTER	1	
14	26352-09D10-000	RUBBER, KICK PEDAL	1	
15	01500-08253-000	BOLT, KICK PEDAL	1	



FIG. 16

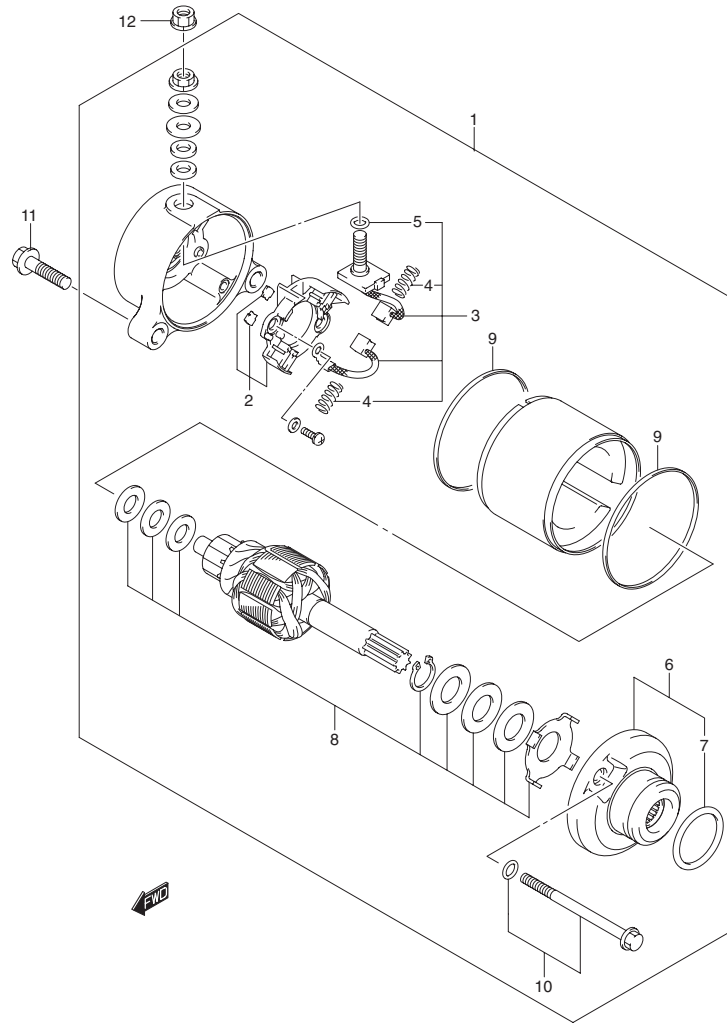


FIG. 16 STARTER MOTOR (F0110XDU Electric Start)

REF. NO.	PART NO.	DESCRIPTION	Q'TY	REMARKS
1	31100-20G00-000	MOTOR ASSY, STARTING	1	
2	31130-20G00-000	HOLDER SET, BRUSH	1	
3	31131-20G00-000	BRUSH SET	1	
4	31135-19D00-000	SPRING	2	
5	31143-49040-000	O-RING	3	
6	31151-20G00-000	HOUSING SET	1	
7	31156-98E00-000	O-RING	1	
8	31170-19B10-000	WASHER SET	1	
9	31264-13E00-000	O-RING	2	
10	31280-20G00-000	BOLT	2	
11	01547-06253-000	BOLT, STARTING MOTOR	2	
12	08361-35066-000	NUT, STARTING MOTOR TERM	1	

3



FIG. 17

FIG. 17 MAGNETO

REF. NO.	PART NO.	DESCRIPTION	QTY	REMARKS
	32100-20G50-000	MAGNETO ASSY	1	FD125XSU
	32100-20G60-000	MAGNETO ASSY	1	FD125XDU
1-1	32101-20G50-000	STATOR	1	FD125XU
1-2	32101-20G60-000	STATOR	1	FD125XDU
2-1	32102-20G50-000	ROTOR	1	FD125XSU
2-2	32102-20G60-000	ROTOR	1	FD125XDU
3	32371-20G00-000	CLAMP, MAGNETO LEAD	1	
4	02142-05103-000	SCREW, SENSOR	2	
5	02112-06203-000	SCREW, MAGNETO STATOR	2	
6	08316-10123-000	NUT, MAGNETO ROTOR	1	
7	08341-31039-000	KEY, MAGNETO ROTOR	1	

3

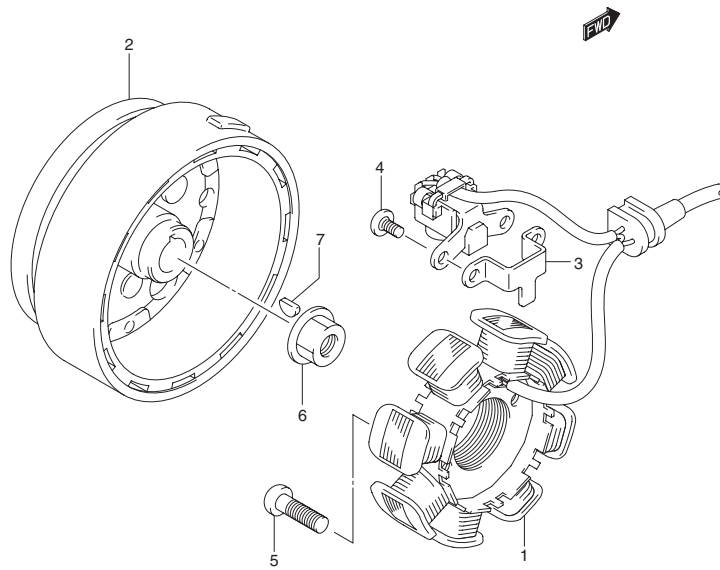


FIG. 18

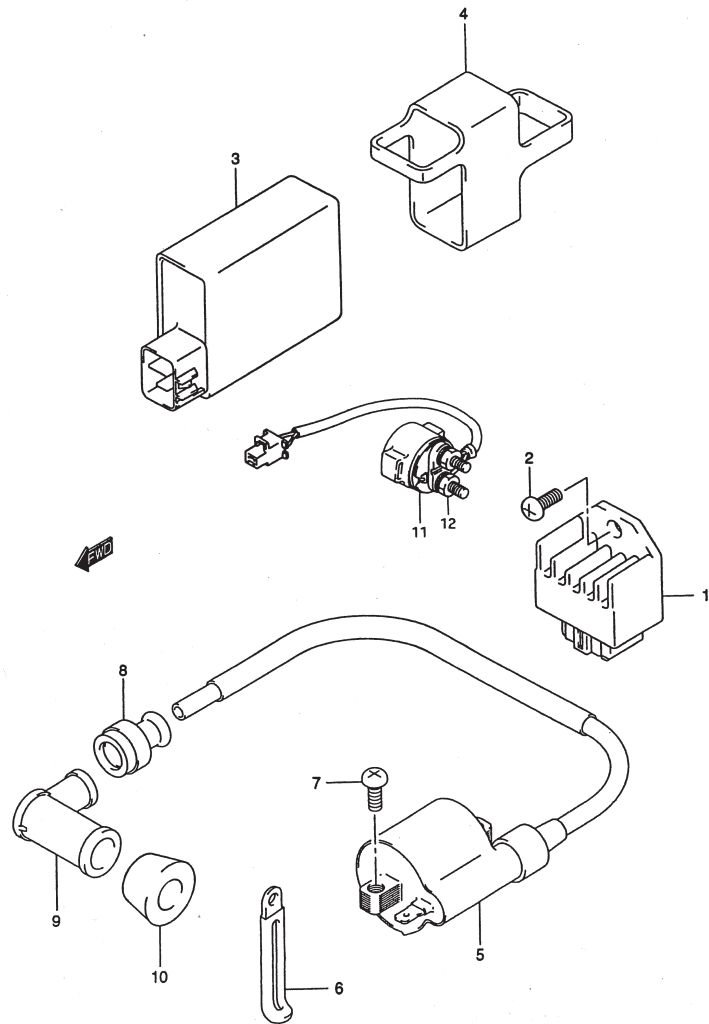


FIG. 18 ELECTRICAL

REF. NO.	PART NO.	DESCRIPTION	QTY	REMARKS
1	32800-47E00-000	RECTIFIER ASSY	1	
2	0242-06123-000	SCREW	1	
3	32900-09G30-000	CDI UNIT	1	
4	32980-20G00-000	CUSHION, CDI UNIT	1	
5	33410-20G00-000	COIL ASSY, IGNITION	1	
6	09404-06429-000	CLAMP, CORD	1	
7	02142-06163-000	SCREW, IGNITION COIL	2	
8	33541-09G00-000	SEAL, SPARK PLUG	1	
9	33510-20G00-000	CAP, SPARK PLUG	1	
10	33542-38B00-000	SEAL, HIGH TENSION CORD	1	
11	31800-31C00-000	RELAY ASSY, STARTING MOTOR	1	FD125XDU
12	08361-35066-000	NUT, STARTING MOTOR RELAY TERMINAL	2	FD125XDU

4

FIG. 19

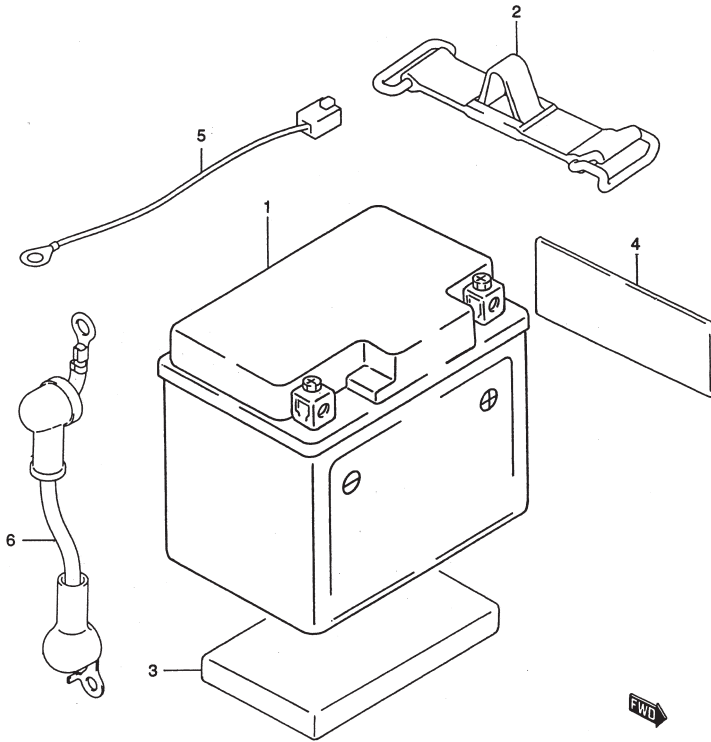


FIG. 19 BATTERY

REF. NO.	PART NO.	DESCRIPTION	QTY	REMARKS
1-1	33610-20G00-000	BATTERY (12V, 2.5H)	1	FD125XSU
2-1	33610-20GA0-000	BATTERY (12V, 2.5H)	1	FD125XDU
2	33651-20G00-000	BAND, BATTERY	1	
3	33652-28C00-000	PROTECTOR, BATTERY	1	
4	33652-38A10-000	PROTECTOR, BATTERY	2	
5	33860-30D00-000	WIRE, BATTERY MINUS LEAD	1	
6	33810-20G00-000	WIRE, STARTING MOTOR	1	FD125XDU



FIG. 20

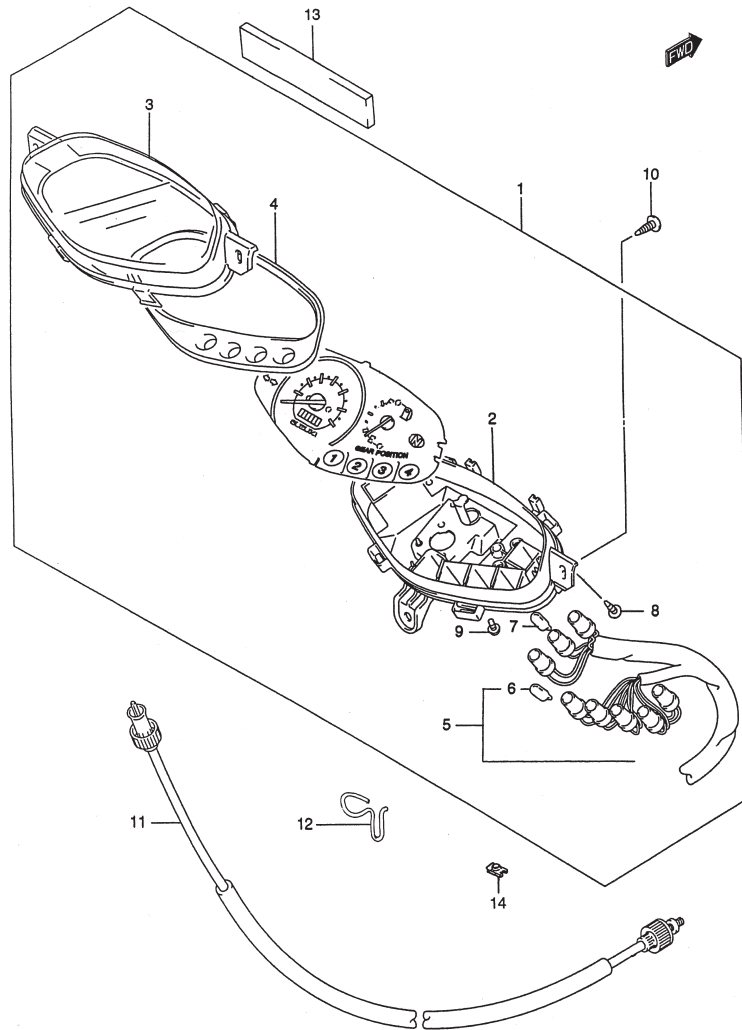


FIG. 20 SPEEDOMETER

REF. NO.	PART NO.	DESCRIPTION	QTY	REMARKS
1-1	34100-09GE0-000	SPEEDOMETER ASSY	1	FD125XSU
1-2	34100-09GH0-000	SPEEDOMETER ASSY	1	FD125XDU
2	34111-09G00-000	CASE, LOWER SPEEDOMETER	1	
3	34112-09G00-000	CASE, UPPER SPEEDOMETER	1	
4	34113-09G00-000	PLATE, SPEEDOMETER	1	
5-1	34170-09G60-000	SOCKET ASSY, SPEEDOMETER	1	FD125XSU
5-2	34170-09G70-000	SOCKET ASSY, SPEEDOMETER	1	
6	09471-12108-000	BULB (12V/1.7W)	7	
7	09471-12103-000	BULB (14V/3W)	1	
8	34186-09G00-000	SCREW, SPEEDOMETER BODY	2	
9	34383-09G00-000	SCREW, FUEL METER	3	
10	03241-05203-000	SCREW, SPEEDOMETER	3	
11	34910-20G10-000	CABLE ASSY, SPEEDOMETER	1	
12	34930-20G00-000	GUIDE, SPEEDOMETER	1	
13	34188-09G00-000	CUSHION, SPEEDOMETER	1	
14	09148-05038-000	NUT, SPEEDOMETER	2	

4

FIG. 21

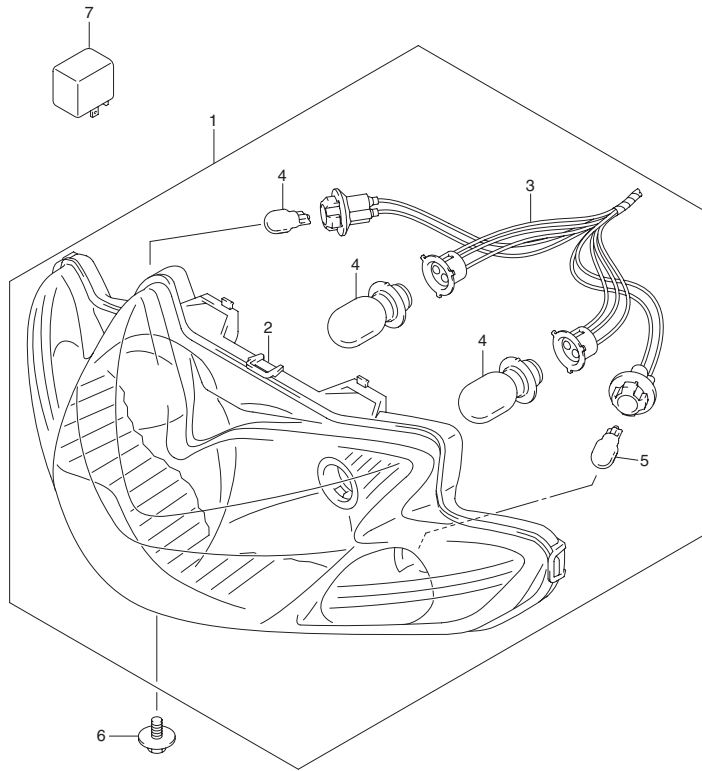


FIG. 21 HEADLAMP

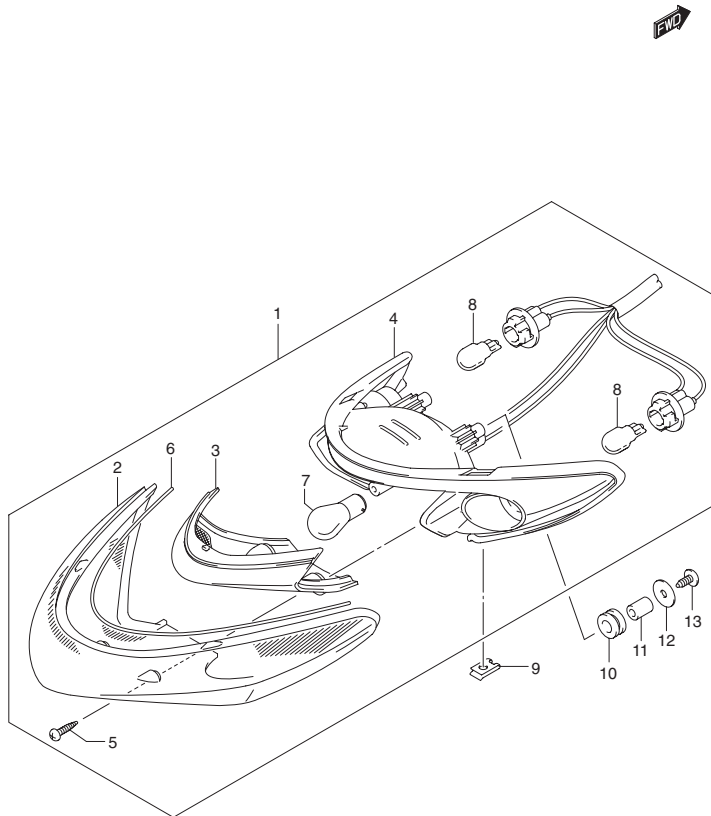
REF. NO.	PART NO.	DESCRIPTION	QTY	REMARKS
1	35100-20G20-000	ASSY	1	
2	35110-20G00-000	UNIT, HEADLAMP	1	
3	35171-20G00-000	SOCKET, HEADLAMP	1	
4	09471-23FA0-000	BULB, HEADLAMP (12V, 18/18W)	2	
5	09471-12203-000	BULB, (12V,10W)	2	
6	09136-05065-000	SCREW, HEADLAMP	1	
7	38610-09410-000	RELAY ASSY, TURN SIGNAL	1	



FIG. 22

FIG. 22 REAR COMBINATION LAMP

REF. NO.	PART NO.	DESCRIPTION	Q'TY	REMARKS
1	35710-20G01-000	LAMP ASSY, REAR COMBINATION	1	
2	35712-20G00-000	LENS, TAIL STOP	1	
3	35912-20G00-000	INNER, LENS	1	
4	35718-20G00-000	HOUSING	1	
5	03211-04206-000	SCREW	2	
6	35713-20G00-000	GASKET	1	
7	09471-12119-000	BULB (12V, 18/5W)	1	
8	09471-12203-000	BULB (12V, 10W)	2	
9	09148-05038-000	NUT, LAMP REAR COMBINATION	2	
10	09320-09016-000	CUSHION, LAMP REAR COMBINATION	2	
11	48211-09G00-000	SPACER, REAR COMB LAMP	2	
12	09160-05045-000	WASHER, LAMP REAR COMBINATION	2	
13	03541-05163-000	SCREW, LAMP REAR COMBINATION	2	



4

FIG. 23

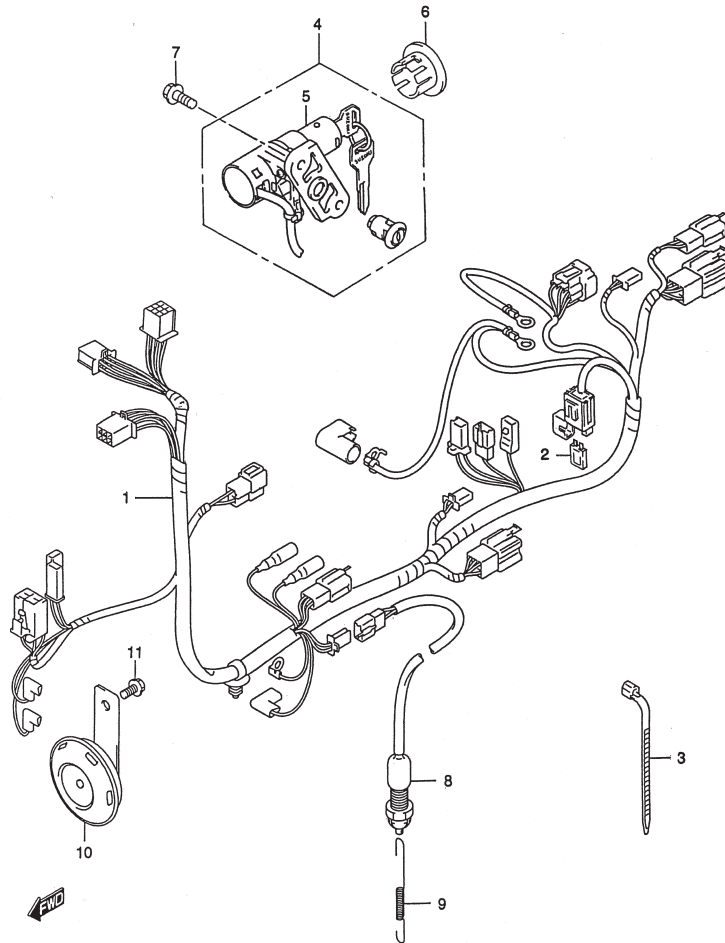


FIG. 23 WIRING HARNESS

REF. NO.	PART NO.	DESCRIPTION	QTY	REMARKS
1-1	36610-20GB0-000	HARNESS, WIRING	1	FD125XSU
1-2	36610-20GG0-000	HARNESS, WIRING	1	FD125XDU
2	09481-10501-000	FUSE (10A)	1	
3-1	09407-18402-000	CLAMP	2	
3-2	09407-25401-000	CLAMP	2	
4	37109-09G30-000	LOCK SET	1	
5	37100-09G30-000	LOCK ASSY, STEERING	1	
6	37155-31C00-000	CAP, STEERING LOCK	1	
7	01550-06163-000	BOLT, STEERING LOCK	2	
8	37740-20G00-000	SWITCH ASSY, STOP LAMP	1	
9	09443-06083-000	SPRING	1	
10	38500-09G01-000	HORN ASSY	1	
11	01550-06123-000	BOLT, HORN	1	



FIG. 24

FIG. 24 HANDLE SWITCH

REF. NO.	PART NO.	DESCRIPTION	QTY	REMARKS
1	37251-09G10-000	CAP, LIGHTING SWITCH	1	
2	37420-09G10-000	SWITCH ASSY, DIMMER	1	
3	37510-09G10-000	SWITCH ASSY, TURN SIGNAL	1	
4	37520-09G10	SWITCH ASSY, HORN	1	
5	37310-09G10-000	SWITCH ASSY, STARTER	1	FD125XDU
6	58711-09G00-000	HOLDER, STARTER CABLE	1	
7	09139-05057-000	SCREW	1	
8	58721-23F01-000	LEVER CHOKE	1	
9	09164-07001-000	WASHER	1	
10	02112-75163-000	SCREW	1	

4

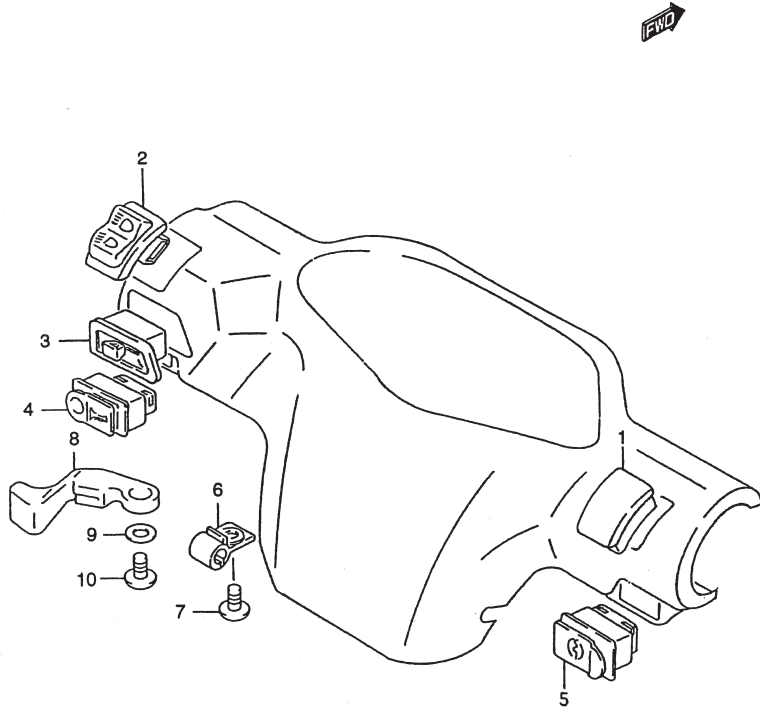




FIG. 25

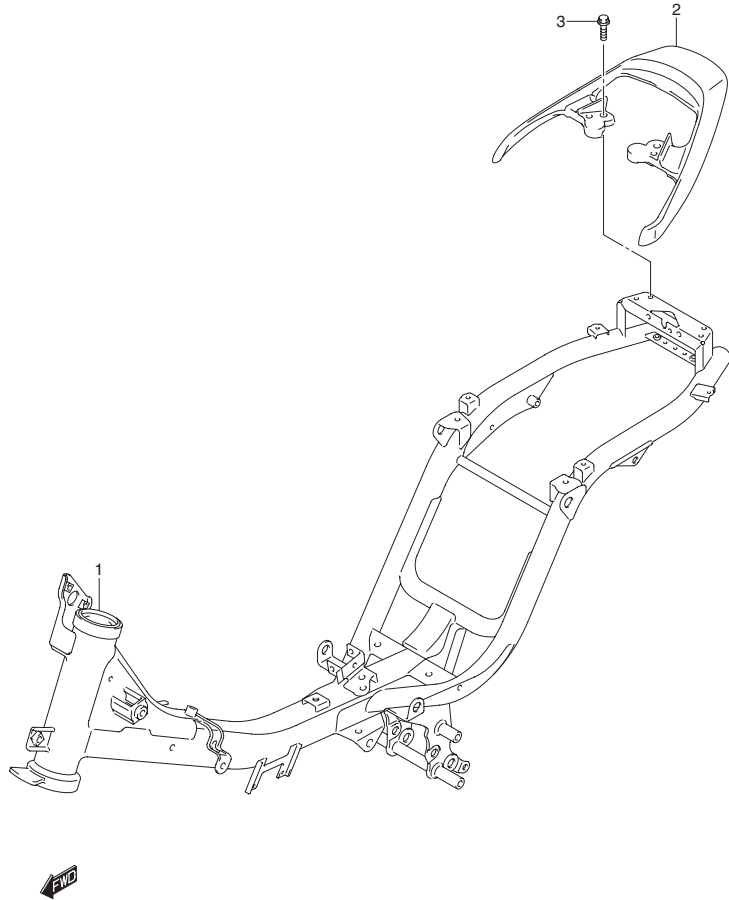


FIG. 25 FRAME

REF. NO.	PART NO.	DESCRIPTION	QTY	REMARKS
1	41100M20G40-104	FRAME	1	
2	46211-20G10-334	HANDLE, PILLION RIDER	1	
3	43750-23F00T000	BOLT	4	

4

FIG. 26

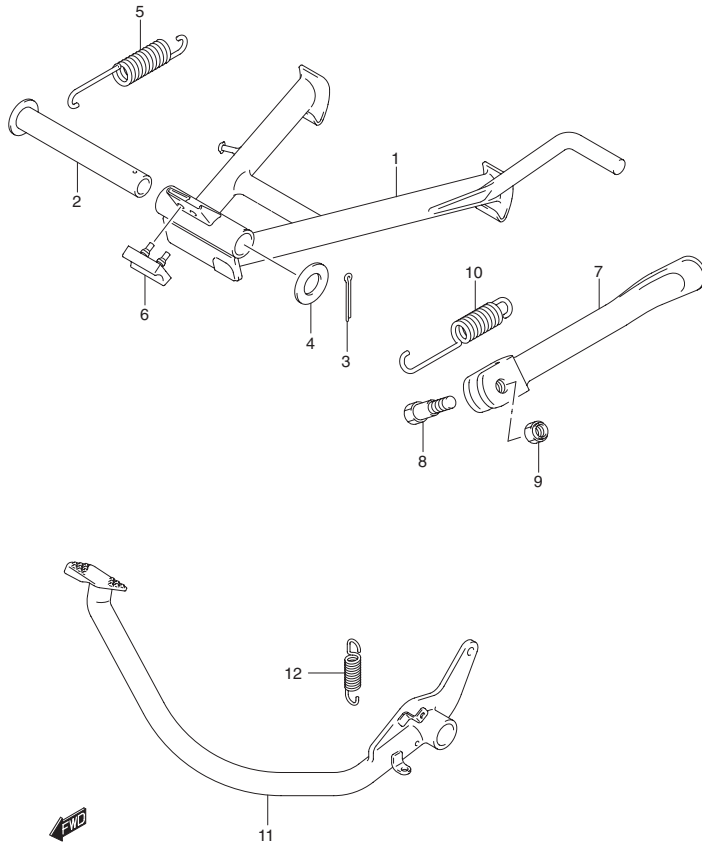


FIG. 26 STAND

REF. NO.	PART NO.	DESCRIPTION	QTY	REMARKS
1	42100-09G10-000	STAND, CENTER	1	
2	42211-09G00-00	SPACER, CENTER STAND	1	
3	04111-30258-000	PIN, CENTER STAND COTTER	1	
4	08322-01163-000	WASHER, CENTER STAND	1	
5	42241-09G00-000	SPRING, CENTER STAND	1	
6	42272-09G00-000	CUSHION, CENTER STAND	1	
7	42310-09G10-104	STAND, PROP	1	
8	42341-09G00-000	BOLT, PROP STAND	1	
9	08319-31108-000	NUT, PROP STAND	1	
10	09443-14022-000	SPRING, PROP STAND	1	
11	43110-20G10-000	PEDAL, BRAKE	1	
12	09443-12033-000	SPRING, BRAKE PEDAL RETURN	1	

FIG. 27

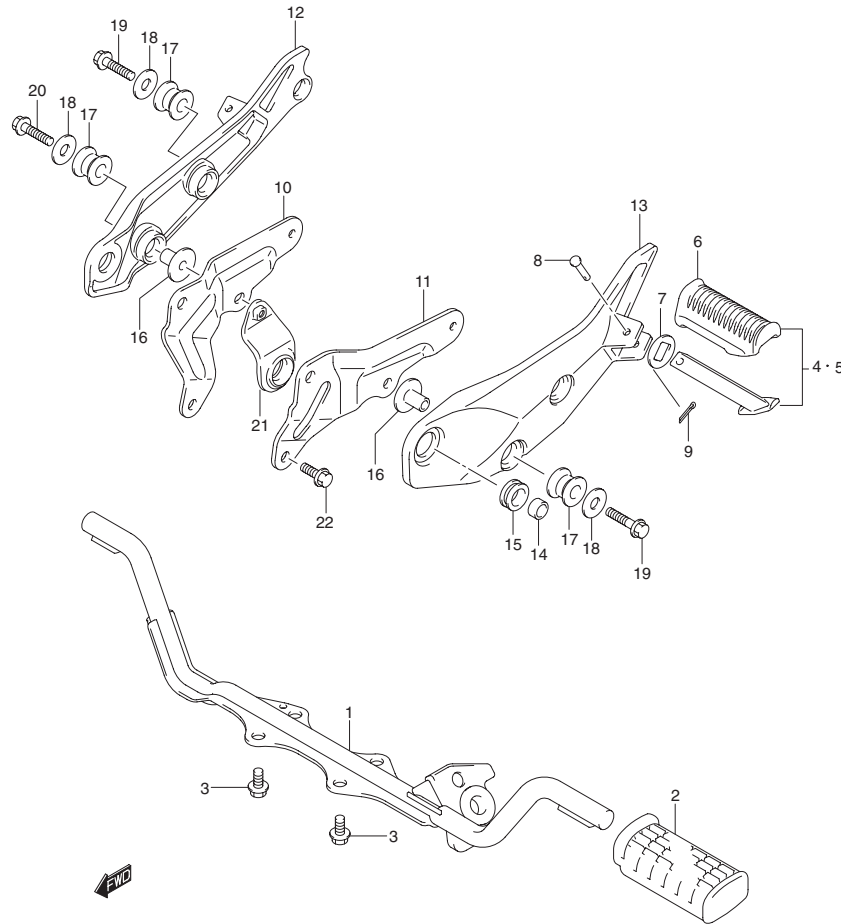


FIG. 27 REAR BRAKE

REF. NO.	PART NO.	DESCRIPTION	QTY	REMARKS
1	43510-09G20-104	BAR, FRONT FOOTREST	1	
2	43551-35510-000	RUBBER	2	
3	01550-08163-000	BOLT, FRONT FOOTREST	4	
4	43600-09G00-000	FOOTREST, PILLION RH	1	
5	43700-09G00-000	FOOTREST, PILLION LH	1	
6	43612-09G00-000	RUBBER	2	
7	43631-34A01-000	WASHER	2	
8	09200-06041-000	PIN	2	
9	04111-25156-000	COTTER PIN	2	
10	43811-20G00-334	BRACKET, PILLION RH	1	
11	43821-20G00-334	BRACKET, PILLION LH	1	
12	43815-20G00-104	HOLDER, PILLION RH	1	
13	43825-20G00-104	HOLDER, PILLION LH	1	
14	43816-23F20-000	SPACER, PILLION FOOTREST PIVOT	2	
15	43817-23F20-000	RUBBER, PILLION FOOTREST PIVOT	2	
16	09180-08151-000	SPACER, PILLION FOOTREST	4	
17	43818-23F20-000	RUBBER, PILLION FOOTREST R,L	4	
18	09160-08032T000	WASHER, PILLION FOOTREST	4	
19	43750-23F00T000	BOLT, PILLION FOOTREST LH	3	
20	43650-23F00T000	BOLT, MUFFLER SUPPORT	1	
21	14770-20G00-000	DAMPER, MUFFLER SUPPORT	1	
22	01550-08203-000	BOLT, PILLION FOOTREST LOWER	2	

4

FIG. 28

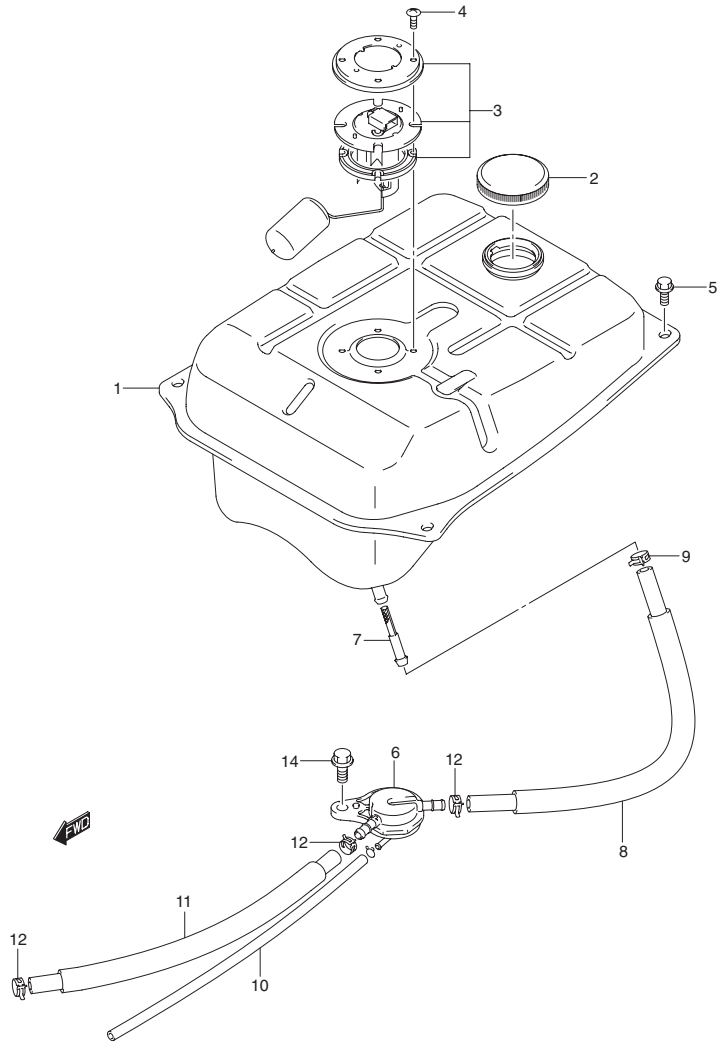


FIG.28 FUEL TANK

REF. NO.	PART NO.	DESCRIPTION	QTY	REMARKS
1	44110M20G01-104	TANK, FUEL	1	
2	44210-35014-000	CAP, FUEL TANK	1	
3	34810-20G10-000	GAUGE ASSY, FUEL LEVEL	1	
4	02142-05123-000	SCREW, FUEL LEVEL GUAGE	4	
5	01550-06123-000	BOLT, FUEL TANK	4	
6	44300-09G00-000	COCK ASSY, FUEL	1	
7	44322-27001-000	FILTER, FUEL	1	
8	44421-20G00-000	HOSE, FUEL ON	1	
9	09401-10409-000	CLIP, FUEL ON	1	
10	09352-40703-230	HOSE, VACUUM	1	
11	44422-20G00-000	HOSE, FUEL COCK&CARB	1	
12	09401-09403-000	CLIP, FUEL HOSE NO.2	3	
13	09401-06101-000	CLIP, VACUUM HOSE	1	
14	01550-06163-000	BOLT, FUEL COCK	1	

FIG. 29

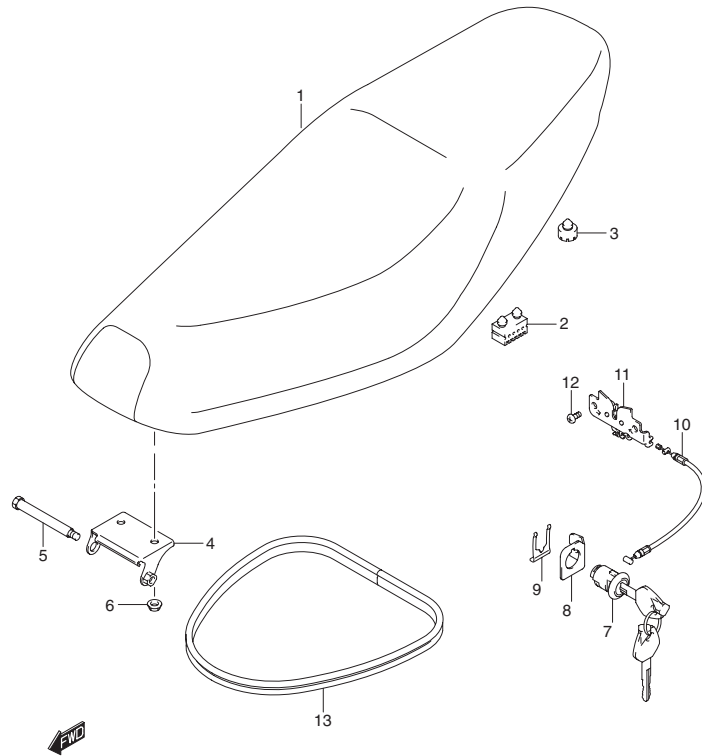


FIG. 29 SEAT

REF. NO.	PART NO.	DESCRIPTION	QTY	REMARKS
1	45100-20G10-000	SEAT ASSY	1	
2	45149-09G00-000	CUSHION	2	
3	45148-20G00-000	CUSHION	2	
4	45250-20G10-000	BRACKET, SEAT HINGE	1	
5	09111-06001-000	BOLT, SEAT HINGE	1	
6	08310-00063-000	NUT, SEAT HINGE	2	
7	95700-14830-000	LOCK, SET	1	
8	45288-20G00-000	GUIDE, SEAT LOCK CABLE	1	
9	45289-09G10-000	PLATE, SEAT LOCK NO.2	1	
10	45280-20G01-000	CABLE, SEAT LOCK	1	
11	45700-20G01-000	BRACKET, STRIKER SUPPORT	1	
12	02142-06103-000	SCREW, STRIKER SUPPORT BRACKET 2		
13	45211-20G00-000	MOLDING, SEAT	1	

4



FIG. 30

FIG. 30 FRAME COVER

REF. NO.	PART NO.	DESCRIPTION	QTY	REMARKS
1-1	47111-20G30-103	COVER, FRAME RH	1	
1-2	47111-20G30-339	COVER, FRAME RH	1	
2-1	47211-20G30-103	COVER, FRAME LH	1	
2-2	47211-20G30-339	COVER, FRAME LH	1	
3-1	47311-20G20-103	COVER, FRAME CENTER	1	
3-2	47311-20G20-339	COVER, FRAME CENTER	1	
4	09148-05038-000	NUT, COVER SIDE FRONT	3	
5	03241-05123-000	SCREW, FRAME COVER SIDE FRONT	2	
6	09320-08018-000	CUSHION, FRAME COVER	4	
7	03241-05163-000	SCREW, COVER & REAR FENDER	3	
8	09320-09016-000	CUSHION, COVER & TAIL	2	
9	09160-05045-000	WASHER, COVER & TAIL	2	
10	03241-05203-000	SCREW, COVER & TAIL	2	
11	03241-15163-000	SCREW, CENTER COVER	2	
12	47161-20G00-000	CUSHION, FRAME COVER	2	
13	33652-35400-000	CUSHION, FRAME COVER	2	
14	47165-09G00-000	CUSHION, FRAME COVER CENTER	2	
15	47165-09G10-000	CUSHION, FRAME COVER CENTER	1	
16	48136-20G00-000	CUSHION, FRAME COVER	2	

4

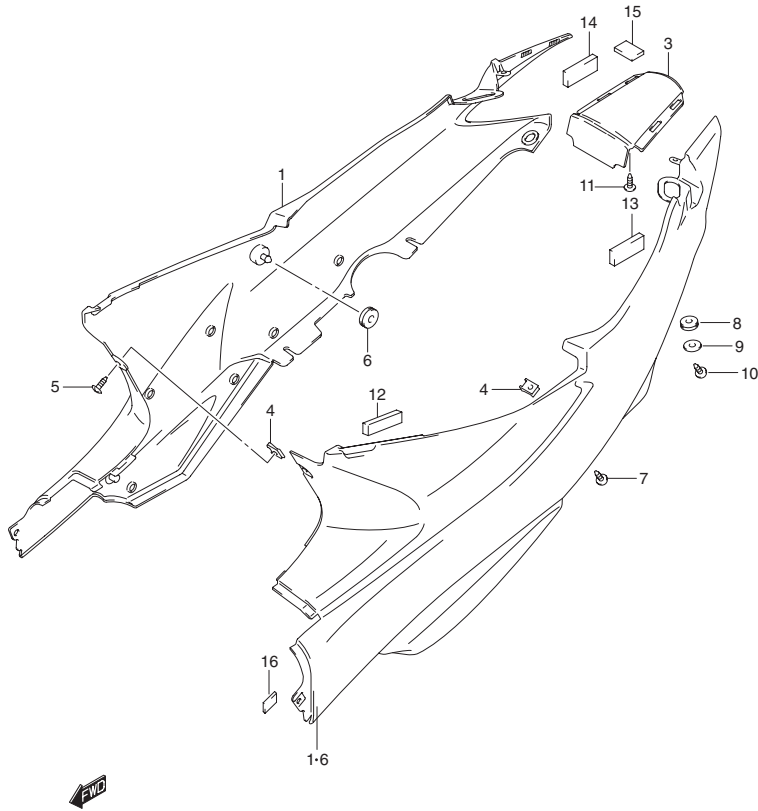




FIG. 31

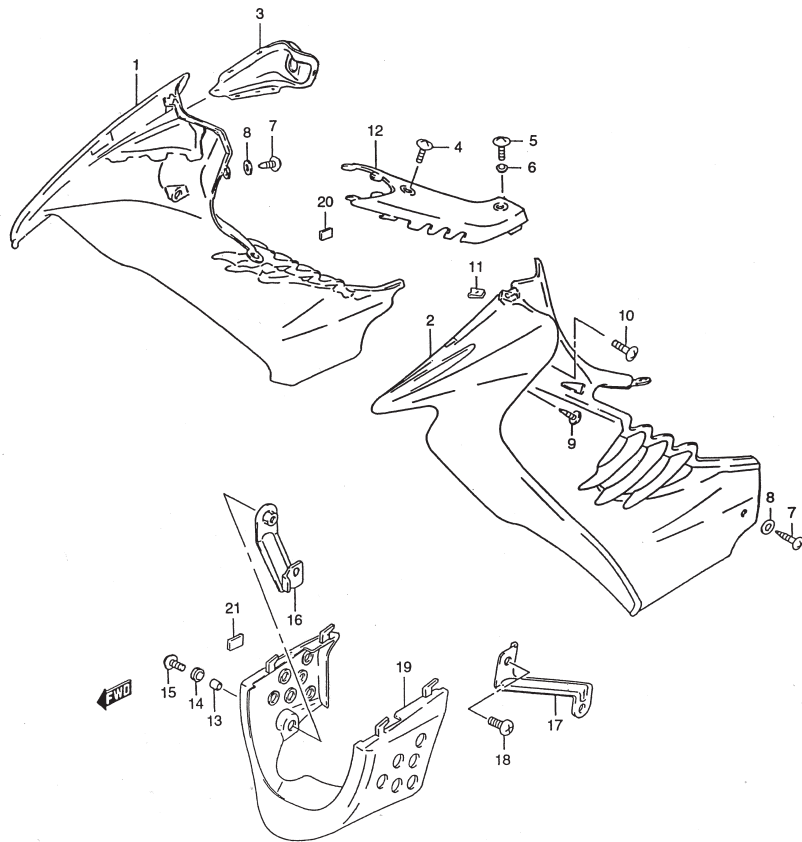


FIG. 31 LEG SHIELD

REF. NO.	PART NO.	DESCRIPTION	QTY	REMARKS
1-1	48110-20G00-000	SHIELD, LEG RH	1	
1.2	48111-20G30-000		1	
1.3	48111-20G30-000		1	
1.4	48111-20G30-000		1	
2.1	48212-20G30-000	SHIELD, LEG RH	1	
2.2	48121-20G30-103		1	
2.3	48121-20G30-277		1	
2.4	48121-20G30-501		1	
3.1	48721-20G20-00K	COVER, STEERING LOCK	1	
3.2	48721-20G20-103		1	
3.3	48721-20G20-277		1	
3.4	48721-20G20-501		1	
4	09136-06004-000	SCREW, LEG SIDE CENTER	1	
5	02142-06123-000	SCREW, LEG CENTER REAR	1	
6	09169-06028T000	WASHER, LEG CENTER REAR	1	
7	03242-05169-000	SCREW, LEG SHIELD REAR	3	
8	09160-05033-000	WASHER, LEG SHIELD REAR	3	
9	03241-15163-000	SCREW, HEAD COVER & LEG SIDE	2	
10	09136-06002-000	SCREW, LEG CENTER UPPER	2	
11	09148-05038-000	NUT, LEG SIDE UPPER	3	
12	48131-20G00-000	SHIELD, LEG CENTER	1	
13	48211-09G00-000	SPACER, LEG SHIELD LOWER	2	
14	09320-09026-000	CUSHION	2	
15	09136-06009-000	SCREW, LOWER	2	
16	48140-20G10T000	BRACE RH	1	
17	48150-20G10T000	BRACE LH	1	
18	02142-06163-000	SCREW, BRACE	1	
19.1	48139-20G10-00K	SHIELD, LEG LOWER	1	
19.2	48139-20G10-103	CUSHION, LEG SHIELD CENTER	1	
20	48135-20G00-000	CUSHION, LEG SHIELD CENTER	10	
21	48136-20G00-000	CUSHION, LEG SHIELD LOWER	4	

4

FIG. 32

FIG. 32 DAMPER

REF. NO.	PART NO.	DESCRIPTION	QTY	REMARKS
	51103-20G80-000	DAMPER ASSY, FRONT FORK RH	1	
	51104-20G80-000	DAMPER ASSY, FRONT FORK LH	1	
1	51130-20G80-000	TUBE, OUTER RH	1	
2	51140-20G80-000	TUBE, OUTER LH	1	
3	51153-23F00-000	OIL SEAL	2	
4	51156-43010-000	RING, STOPPER	2	
5	51173-23F00-000	DUST SEAL	2	
6	51147-16510-000	BOLT, CYLINDER	2	
7	51148-41310-000	GASKET	2	
8	51146-31CB0-000	CYLINDER	2	
9	51177-35400-000	SPRING CYLINDER	2	
10	51196-39140-000	RING, PISTON	2	
11	51110-20G80-000	TUBE COMP INNER	2	
12	51171-20G80-000	SPRING, REBOUND	2	
13	51181-37B00-000	O-RING	2	
14	51351-09G10-000	CAP, FRONT FORK	2	

4

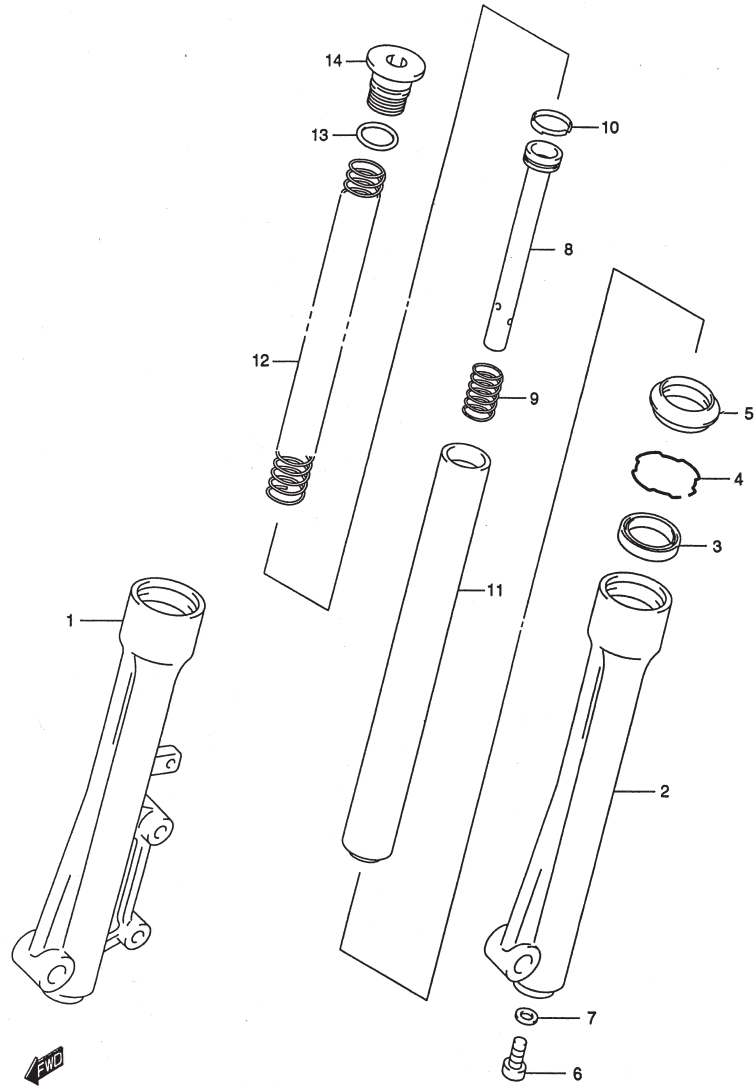


FIG. 33

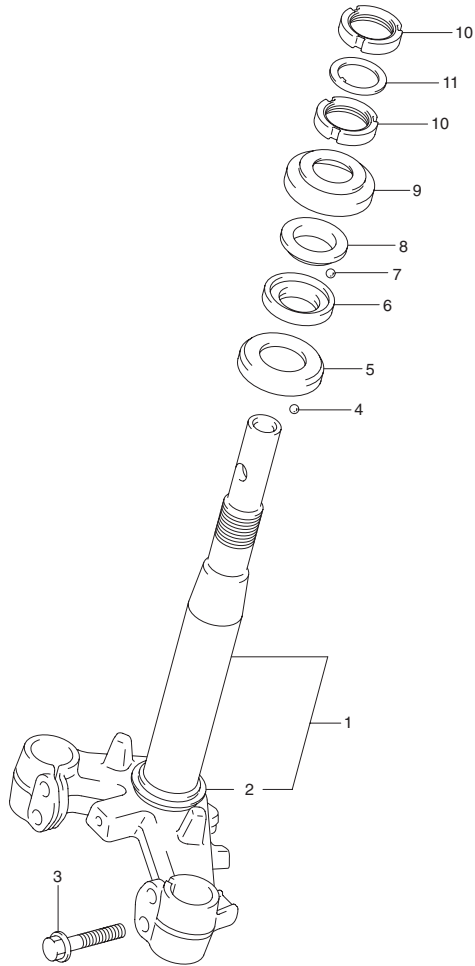


FIG. 33 FRONT FORK BRACKET

REF. NO.	PART NO.	DESCRIPTION	QTY	REMARKS
1	51410-20G00-000	BRACKET, FRONT FORK UNDER	1	
2	51622-35400-000	RACE, OUTER LOWER	1	
3	01550-10453-000	BOLT, FRONT FORK UNDER	4	
4	51612-09G00-000	RACE, INNER LOWER	1	
5	51611-09G10-000	RACE, INNER UPPER	1	
6	06111-06004-000	BALL, LOWER	49	
7	51621-25000-000	RACE, OUTER UPPER	1	
8	51643-06001-000	SEAL, DUST UPPER	1	
9	51631-05000-000	NUT, STEERING STEM	2	
10	09166-24001-000	WASHER, STEERING STEM	1	

4

FIG. 34

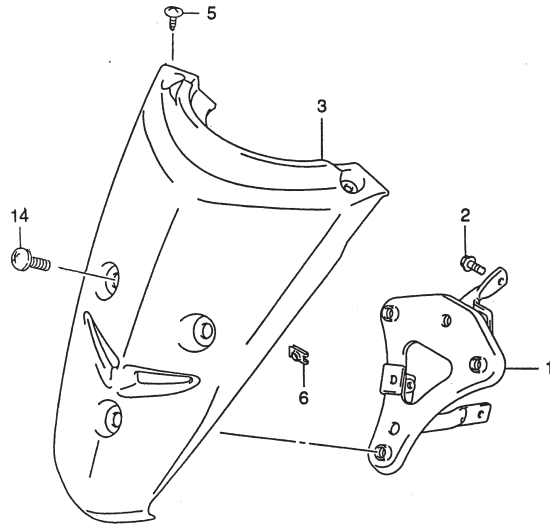


FIG. 34 FRONT FENDER

REF. NO.	PART NO.	DESCRIPTION	QTY	REMARKS
1	51860-20G00-000	BRACE, HEAD COVER	1	
2	01547-06123-000	BOLT	2	
3.1	51871-20G00-103	COVER, FRAME HEAD	1	
3.2	51871-20G00-339	COVER, FRAME HEAD	1	
4	53111-20G20-103	FENDER, FRONT NO.1	1	
5	03241-15163-000	SCREW , FRAME HEAD COVER	2	
6	09148-05038-000	NUT, FRAME HEAD COVER	2	
7	53211-20G20-000	FENDER, FRONT NO.2	1	
8	58621-47E00T000	GUIDE, FRONT BRAKE CABLE LOWER	1	
9	53274-09G00-000	SCREW, FRONT FENDER UPPER	1	
10	09169-06060-000	WASHER, FRONT FENDER	3	
11	02142-06163-000	SCREW , FRONT FENDER	2	
12	01550-06123-000	BOLT, FRONT FENDER	1	
13	53145-20G00-000	CUSHION, FRONT FENDER	2	
14	09136-06002-000	SCREW, FRAME HEAD COVER	3	

4

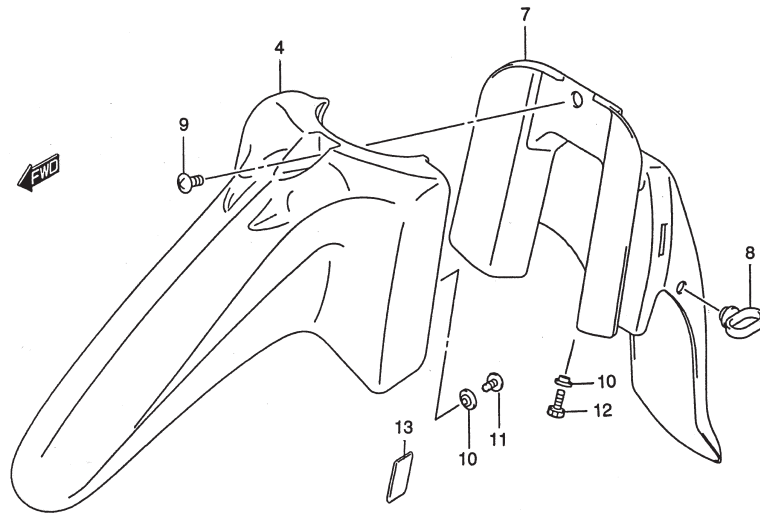


FIG. 35

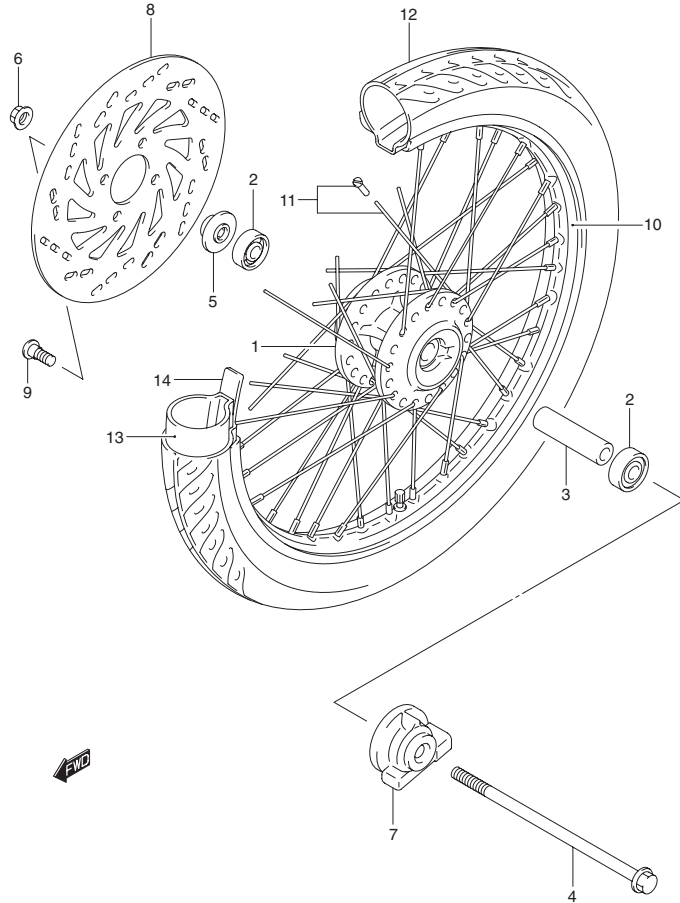


FIG. 35 FRONT WHEEL

REF. NO.	PART NO.	DESCRIPTION	Q'TY	REMARKS
1	54111-09G20-000	HUB, FRONT WHEEL (13L)	1	
2	08123-63007-000	BEARING	2	
3	09180-10148-000	SPACER, FRONT HUB	1	
4	54711-04701-000	AXLE, FRONT	1	
5	54750-46100-000	SPACER, FRONT AXLE RH	1	
6	08319-31108-000	NUT, FRONT AXLE	1	
7	54600-30D00-000	BOX ASSY, SPEEDOMETER	1	
8	59211-20G10-000	DISC, FRONT BRAKE (GOLD)	1	
9	59218-09G00-000	BOLT, FRONT BRAKE DISC	4	
10	55311M46100-000	RIM, FRONT WHEEL (17X1.40)	1	
11	55320-46100-000	SPOKE ASSY, FRONT WHEEL	1	
12	55110M09G70-000	TIRE, FRONT, (70/90-17)	1	
13	55200M01011-000	TUBE ASSY, WHEEL INNER	1	
14	55261M01011-000	PROTECTOR, WHEEL INNER	1	

4

FIG. 36

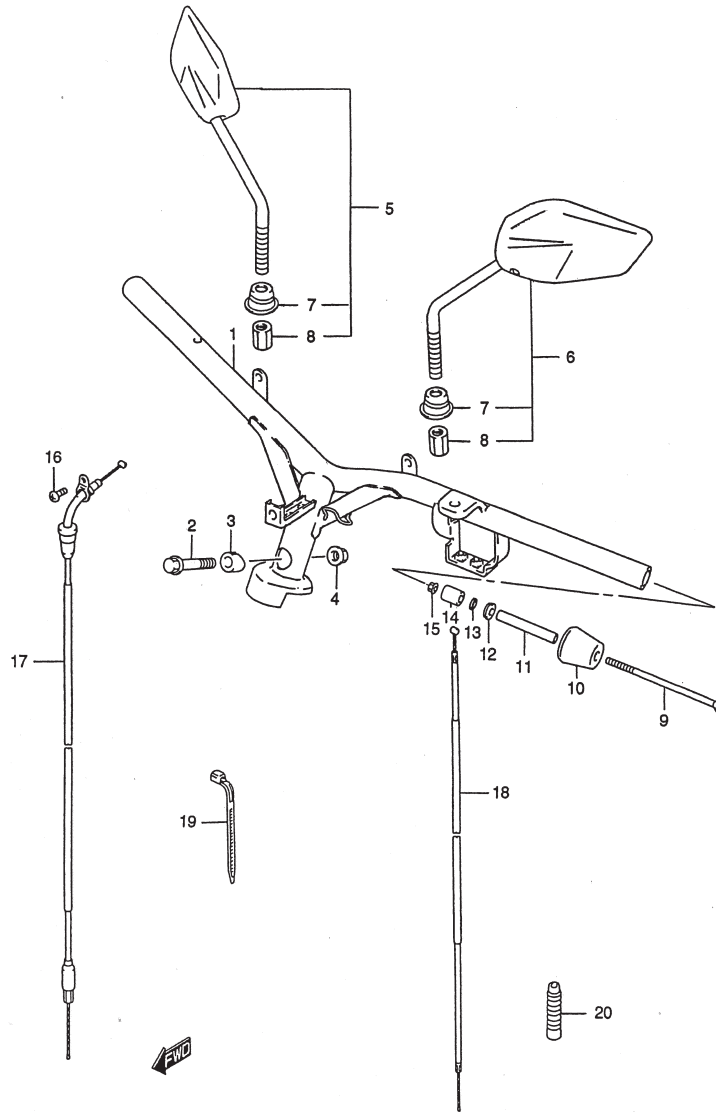


FIG. 36 HANDLEBAR

REF. NO.	PART NO.	DESCRIPTION	QTY	REMARKS
1	56110-20G40-000	HANDLE BAR	1	
2	09103-10126-000	BOLT, HANDLE BAR STOPPER	1	
3	51358-09G00T000	STOPPER, HANDLE BAR	1	
4	08319-31108-000	NUT, HANDLE BAR STOPPER	1	
5	56500-20G00-000	MIRROR ASSY, REAR VIEW RH	1	
6	56600-20G00-000	MIRROR ASSY, REAR VIEW LH	1	
7	56520-16B00-000	COVER, NUT	2	
8	56632-09G00-000	NUT, REAR VIEW MIRROR	2	
9	09127-06018-000	SCREW , HANDLE BALANCER	2	
10	56278-28F00-000	BALANCER, HANDLE BAR	2	
11	56276-17D00-000	SPACER, EXPANDER	2	
12	56272-28F00-000	EXPANDER, HANDLE BALANCER OUTER	2	
13	09160-06126-000	WASHER, EXPANDER	2	
14	56272-23F10-000	EXPANDER, HANDLE BALANCER INNER	2	
15	09159-06024-000	NUT, HANDLE BALANCER	2	
16	02112-05123-000	SCREW , THROTTLE CABLE	1	
17	58300-20G10-000	CABLE ASSY, THROTTLE	1	
18	58410-20g00-000	CABLE, STARTER	1	
19	09407-25401-000	CLAMP, CABLE	1	
20	58333-35400-000	DUST, SEAL STARTER	1	

FIG. 37

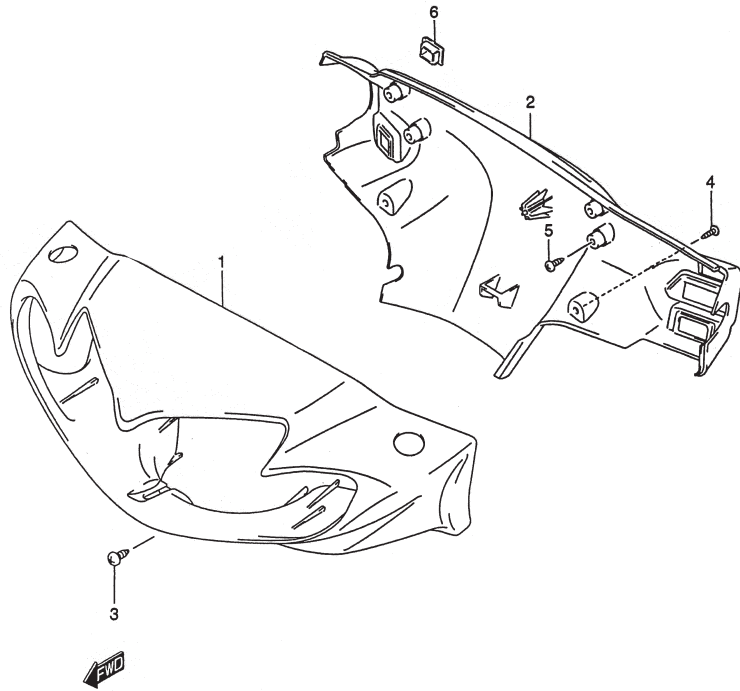


FIG.37 HANDLE COVER

REF. NO.	PART NO.	DESCRIPTION	QTY	REMARKS
1-1	56311-20G02-00K	COVER, HANDLE FRONT	1	
1-2	56311-20G02-103	COVER, HANDLE FRONT	1	
1-3	56311-20G00-277	COVER, HANDLE FRONT	1	
1-4	56311-20G02-501	COVER, HANDLE FRONT	1	
2-1	56321-20G30-00K	COVER, HANDLE REAR	1	
2-2	56321-20G30-103	COVER, HANDLE REAR	1	
2-3	56321-20G30-277	COVER, HANDLE REAR	1	
2-4	56321-20G30-501	COVER, HANDLE REAR	1	
3	02142-05123-000	SCREW, HANDLE COVER REAR	2	
4	03541-04163-000	SCREW, REAR SIDE	2	
5	03511-05163-000	SCREW, REAR UPPER	2	
6	56322-09G00-000	CAP, HANDLE REAR COVER	1	FD125XSU

4

FIG. 38

FIG. 38 HANDLE LEVER

REF. NO.	PART NO.	DESCRIPTION	QTY	REMARKS
1	57110-23F10-000	GRIP, THROTTLE	1	
2	57100-09G00-000	CASE ASSY, THROTTLE	1	
3	02112-05203-000	SCREW	2	
4	57421-21D10-000	LEVER, BRAKE	1	
5	57431-21D00-000	BOLT, BRAKE LEVER PIVOT	1	
6	08319-21063-000	NUT, BRAKE LEVER PIVOT	1	
7	57460-17C00-000	SWITCH ASSY, STOP	1	
8	69688-34200-000	SCREW	1	
9	57211-22D01-000	GRIP, LH	1	

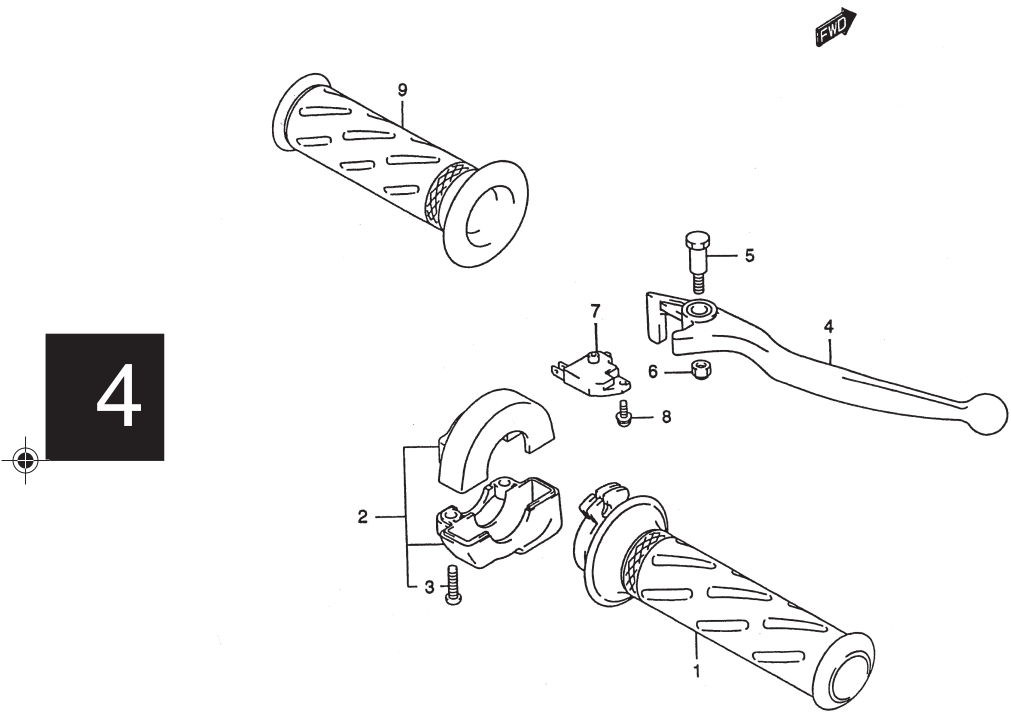


FIG. 39

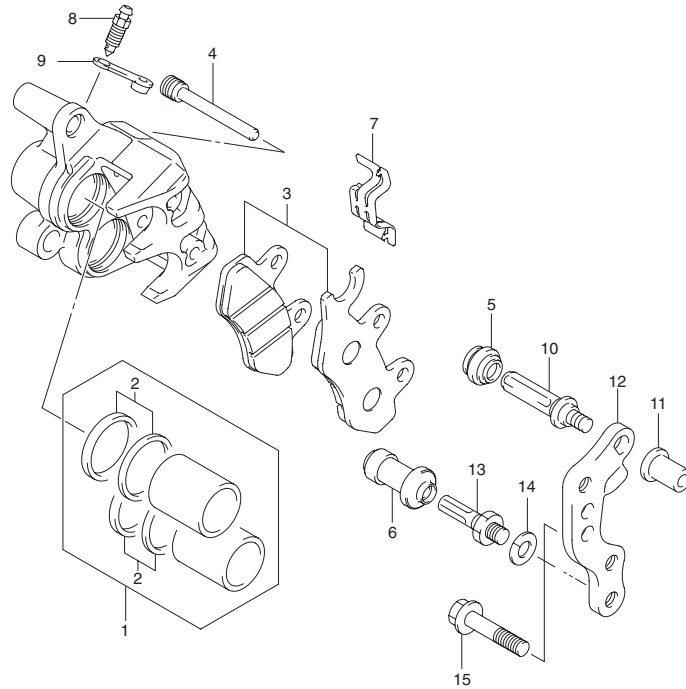


FIG. 39 FRONT CALIPER

REF. NO.	PART NO.	DESCRIPTION	Q'TY	REMARKS
1	59100-47E02T000	CALIPER ASSY, FRONT	1	
2	69100-31810-000	PISTON SET	1	
3	59300-13820-000	SEAL SET, PISTON	1	
4	59100-21850-000	PAD SET	1	
5	59345-14600-000	PIN	2	
6	59303-14500-000	BOOT	1	
7	59386-13A00-000	BOOT	1	
8	69115-31D10-000	SPRING	1	
9	59121-01A00-000	BLEEDER	1	
10	59122-01A00-000	CAP, BLEEDER	1	
11	59387-00B20-000	PIN	1	
12	59388-00B20-000	NUT	1	
13	59151-47E00-000	BRACKET	1	
14	59382-13A00-000	BOLT	1	
15	59314-13A00-000	WASHER	1	
	09103-08107-000		2	

4

FIG. 40

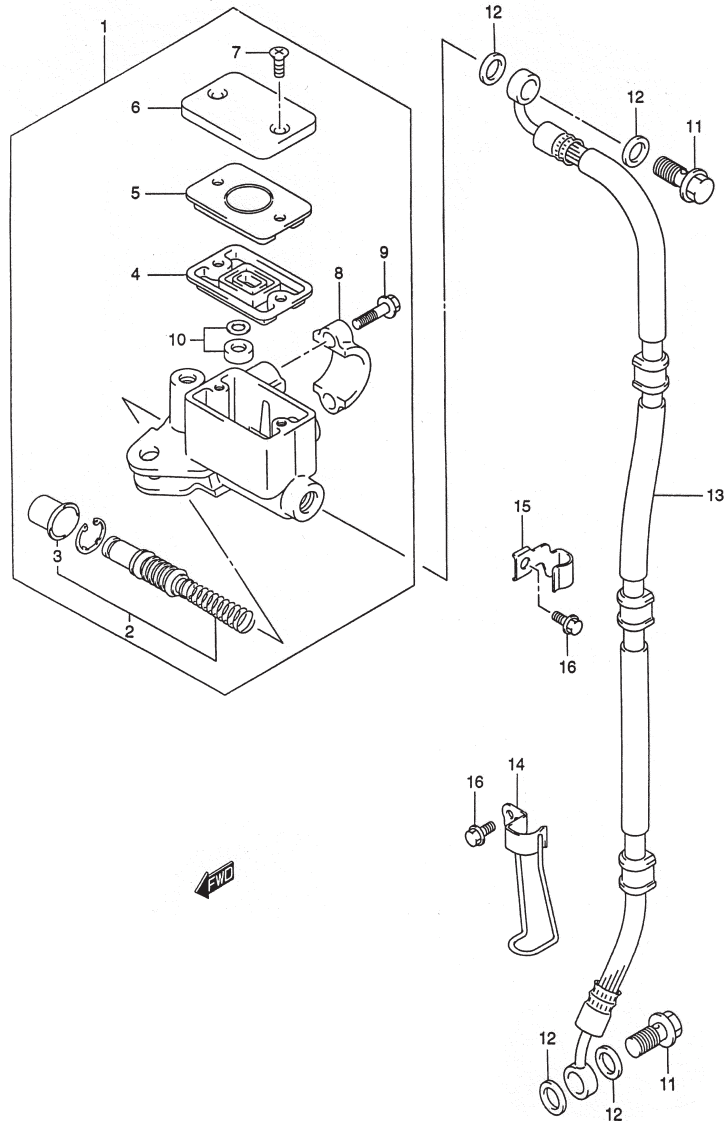


FIG. 40 FRONT MASTER CYLINDER

REF. NO.	PART NO.	DESCRIPTION	QTY	REMARKS
1	59600-2IGIIT000	CYLINDER ASSY, FRONT MASTER	1	
2	59600-21810-000	PISTON CUP SET	1	
3	59666-44300-000	BOOT	1	
4	59667-44B00-000	DIAPHRAGM	1	
5	59668-21D00T000	PLATE, DIAPHRAGM	1	
6	69669-24A01T000	CAP, BLEEDER	1	
7	69689-49300-000	SCREW	2	
8	59671-36500-000	HOLDER	1	
9	59675-19C00-000	BOLT	2	
10	59748-14500-000	SEPARATOR	1	
11	09360-10042-000	BOLT, BRAKE FLUID	2	
12	09168-10033-000	WASHER, BRAKE FLUID	4	
13	59480-20G00-000	HOSE, FRONT BRAKE	1	
14	59260-20G00T-000	CLAMP, FRONT BRAKE HOSE NO.1	1	
15	59245-20G00-000	CLAMP, FRONT BRAKE HOSE NO.2	1	
16	01550-06103-000	BOLT, LOWER HOSE	2	



FIG. 41

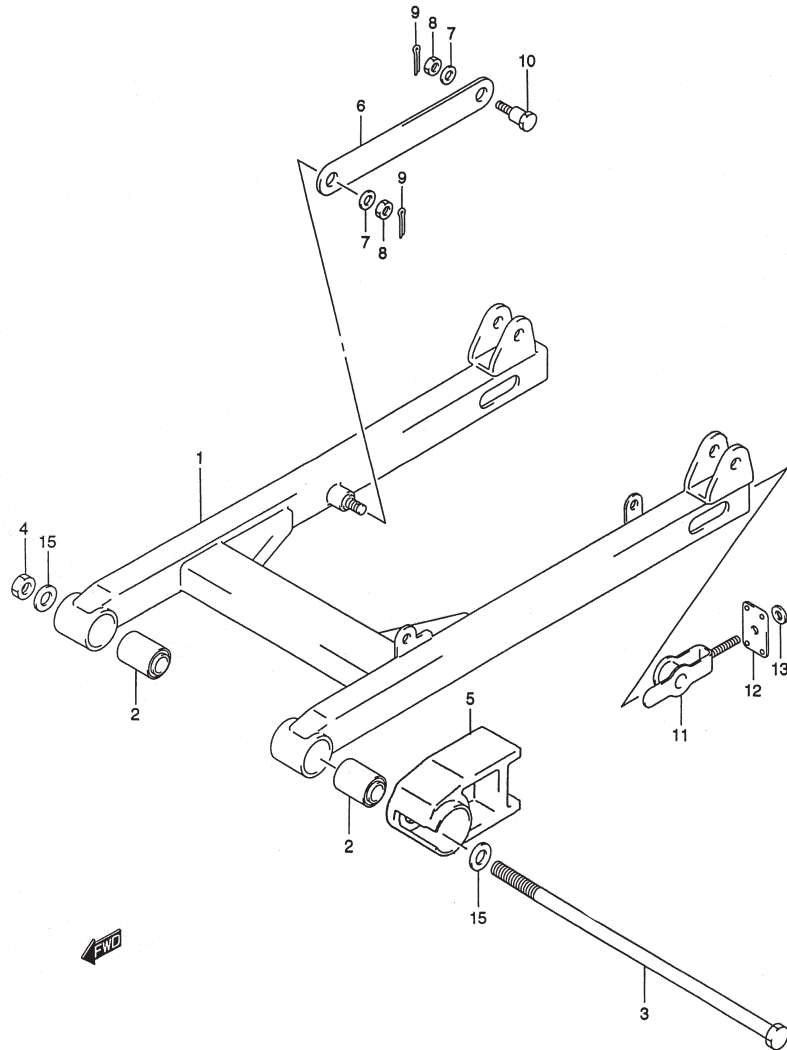


FIG. 41 REAR SWINGING ARM

REF. NO.	PART NO.	DESCRIPTION	QTY	REMARKS
1	61100-20G50-334	SWINGING ARM, REAR	1	
2	09319-10023-000	BUSHING, REAR SWINGING ARM	2	
3	61211-31C10-000	SHAFT, REAR SWINGING ARM	1	
4	08310-00107-000	NUT, REAR SWINGING ARM	1	
5	61273-20G10-000	BUFFER, CHAIN TOUCH	1	
6	64311-31C11T000	TORQUE LINK, REAR	1	
7	08322-01083-000	WASHER	2	
8	09140-08008-000	NUT	2	
9	04111-20208-000	COTTER PIN	2	
10	09111-08013-000	BOLT	1	
11	61410-20G00-000	ADJUSTER, CHAIN	2	
12	61421-20G00-000	GUIDE, ADJUSTER	2	
13	09160-12061-000	WASHER CHAIN ADJUSTER	2	
14	08319-31068-000	NUT, CHAIN ADJUSTER	2	
15	09160-10506-000	WASHER	2	

4

FIG. 42

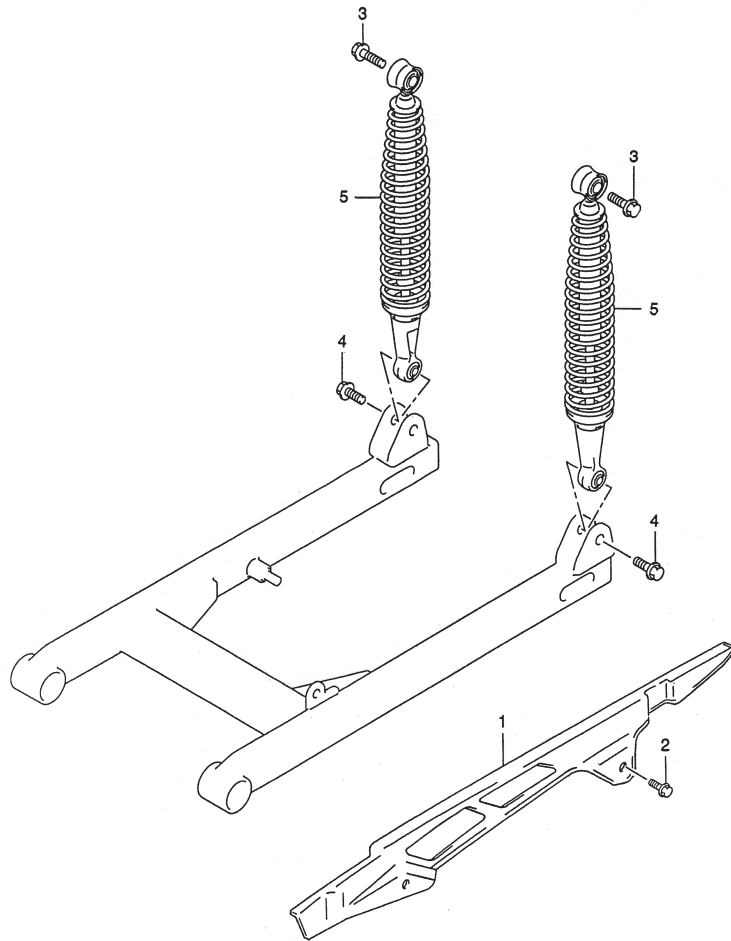


FIG. 42 CHAIN CASE

REF. NO.	PART NO.	DESCRIPTION	QTY	REMARKS
1	61311-09G20-000	CASE, CHAIN	1	
2	61361-09G00-000	BOLT, CHAIN CASE	2	
3	09103-10333T000	BOLT, REAR SHOCK UPPER	2	
4	09103-10229-000	BOLT, REAR SHOCK LOWER	2	
5	62100-20G81-000	ABSORBER ASSY, REAR SHOCK	2	

FIG. 43

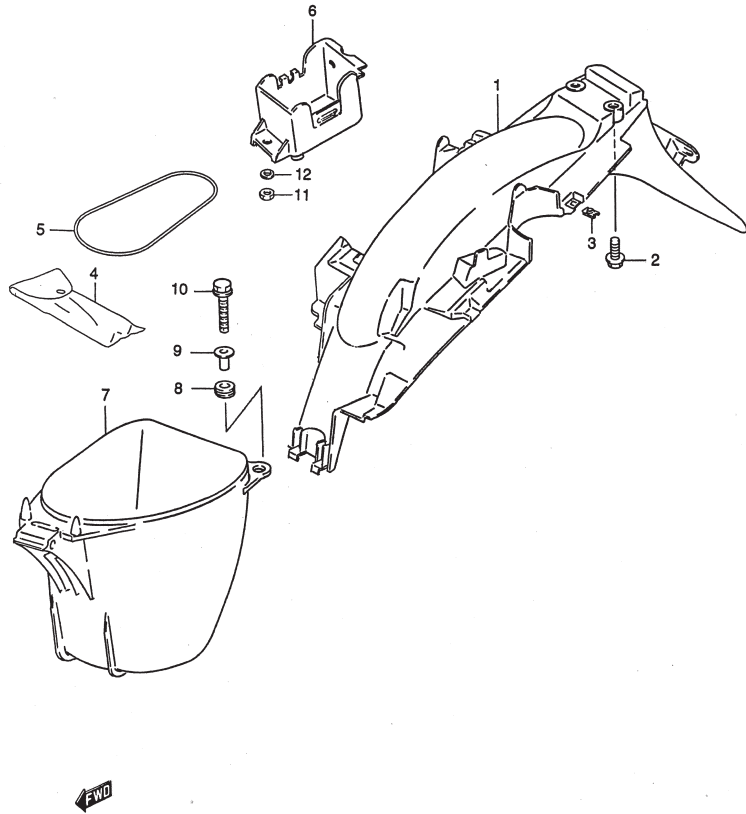


FIG.43 REAR FENDER

REF. NO.	PART NO.	DESCRIPTION	QTY	REMARKS
1	63111-20G00-000	FENDER, REAR	1	
2	61361-09G00-000	BOLT	2	
3	09148-05038-000	NUT	5	
4	96510-09G00-000	TOOL ASSY	1	
5	47435-09G00-000	BAND, TOOL	1	
6	41541-20G00-000	HOLDER, BATTERY	1	
7	92211-20G00-000	BOX, HELMET	1	
8	92216-20G00-000	CUSHION, HELMET BOX	4	
9	92215-20G00-000	SPACER, HELMET BOX	4	
10	01547-06303-000	BOLT, HELMET BOX	4	
11	08319-21063-000	NUT HOLDER BATTERY	1	
12	09160-06109-000	WASHER HOLDER BATTERY	1	

4

FIG. 44

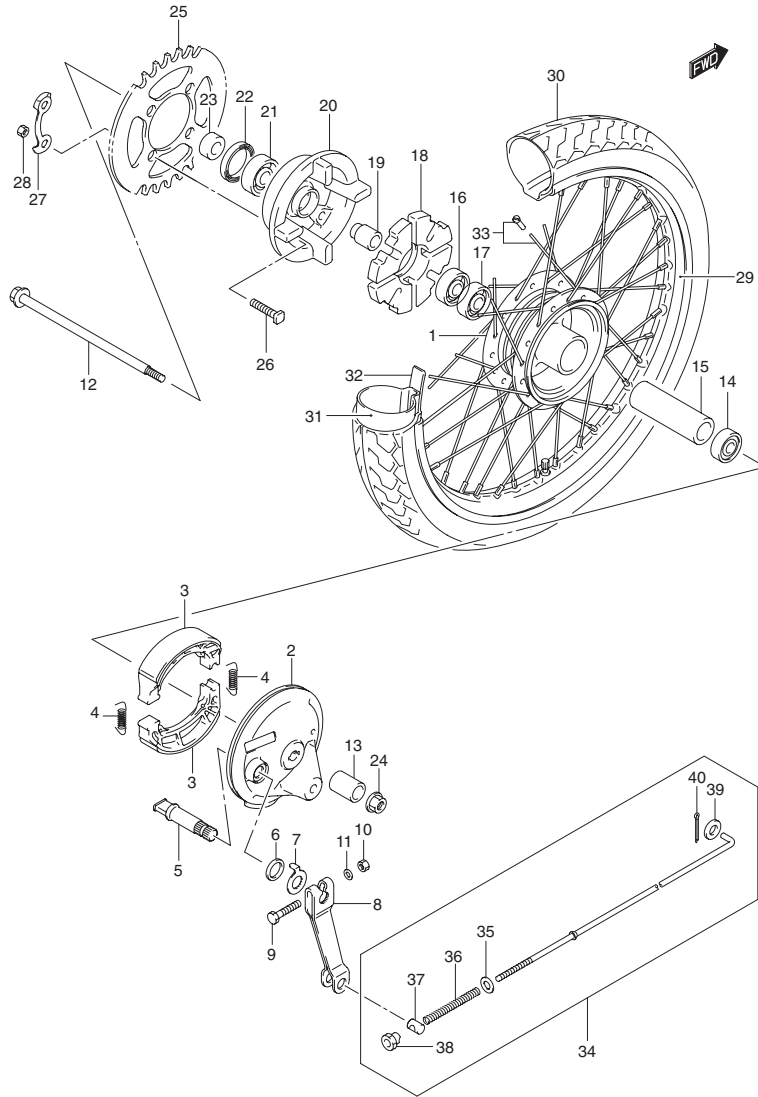


FIG.44 REAR WHEEL

REF. NO.	PART NO.	DESCRIPTION	QTY	REMARKS
1	64110-09G01T000	HUB, REAR WHEEL (13L)	1	
2	64210-09G00-000	PANEL, REAR BRAKE	1	
3	54400-09810-000	SHOE, BRAKE	1	
4	54424-09G00-000	SPRING, REAR BRAKE SHOE	2	
5	64441-09G00-000	SHAFT, BRAKE CAM	1	
6	54443-09G00-000	SEAL, BRAKE CAM DUST	1	
7	54492-09G00-000	PLATE, BRAKE LINING	1	
8	64451-09G00-000	LEVER, BRAKE CAM	1	
9	09100-06078-000	BOLT, REAR BRAKE CAM	1	
10	08310-00063-000	NUT, REAR BRAKE CAM LEVER	1	
11	08322-01063-000	WASHER, REAR BRAKE CAM LEVER	1	
12	64711-31C20-000	AXLE, REAR	1	
13	64731-31C20-000	SPACER, REAR AXLE RH	1	
14	08140-63017-000	BEARING, RH	1	
15	09180-12143-000	SPACER, BEARING	1	
16	08140-62017-000	BEARING, LH	1	
17	08110-62017-000	BEARING, REAR HUB INNER LH	2	
18	64651-30D01-000	ABSORBER, REAR HUB SHOCK	1	
19	64733-43000-000	RETAINER, REAR SPROCKET DRUM	1	
20	64611-01001-000	DRUM, SPROCKET MOUNTING	1	
21	08113-62037-000	BEARING	1	
22	09285-25003-000	SEAL OIL	1	
23	64721-35500-000	SPACER, REAR AXLE LH	1	
24	08319-31128-000	NUT, REAR AXLE	1	
25	64511-354B0-000	SPROCKET, REAR (35T)	1	
26	09105-08011-000	BOLT, REAR SPROCKET	4	
27	09169-08011-000	LOCK WASHER	2	
28	08310-00083-000	NUT, REAR SPROCKET	4	
29	65311M46730-000	WHEEL RIM (1.60X17)	1	
30	65110M09G70-000	TIRE, REAR (80/90-17)	1	
31	55200M03600-000	TUBE ASSY, INNER	1	
32	55261M01011-000	PROTECTOR, INNER TUBE	1	
33	65320-03020-000	SPOKE SET, REAR WHEEL	1	
34	43300-20G00-000	ROD ASSY, REAR BRAKE	1	
35	08322-01063-000	WASHER	1	
36	09440-09004-000	SPRING	1	
37	09209-11002-000	PIN	1	
38	09150-06001-000	NUT	1	
39	08322-01053-000	WASHER	1	
40	04111-20208-000	PIN, COTTER	1	



PART NO.	FIG. NO.	REF.NO.	PART NO.	FIG. NO.	REF.NO.	PART NO.	FIG. NO.	REF.NO.
00000			02112-05203-000	38	- 3	08110-68050-000	14	- 14
			02112-06203-000	17	- 5	08113-62037-000	44	- 21
			02112-75163-000	14	- 34	08113-69050-000	6	- 3
			02112-75163-000	24	- 10	08123-63007-000	35	- 2
			02122-06163-000	5A	- 3	08140-62017-000	44	- 16
01421-06208-000	10	- 2	02142-05083-000	4	- 11	08140-63017-000	44	- 14
01500-06103-000	13	- 22	02142-05103-000	17	- 4	08211-06121-000	14	- 18
01500-06163-000	15	- 10	02142-05123-000	28	- 4	08211-08141-000	11	- 4
01500-06203-000	14	- 29	02142-05123-000	37	- 3	08211-12261-000	14	- 26
01500-08253-000	15	- 15	02142-06103-000	29	- 12	08211-14321-000	15	- 12
01500-10163-000	3	- 7	02142-06103-000	14	- 13	08310-00063-000	29	- 6
01547-06123-000	3	- 13	02142-06123-000	31	- 5	08310-00063-000	44	- 10
01547-06123-000	34	- 2	02142-06123-000	13	- 19	08310-00083-000	44	- 28
01547-06163-000	11	- 11	02142-06163-000	31	- 18	08310-00107-000	41	- 4
01547-06203-000	4	- 15	02142-06163-000	34	- 11	08316-10063-000	10	- 3
01547-06203-000	7	- 8	02142-06163-000	18	- 7	08316-10083-000	10	- 12
01547-06203-000	1	- 13	0242-06123-000	18	- 2	08316-10123-000	17	- 6
01547-06203-000	1	- 18	03211-04206-000	22	- 5	08319-21063-000	43	- 11
01547-06253-000	1	- 23	03241-05123-000	30	- 5	08319-21063-000	38	- 6
01547-06253-000	1	- 19	03241-05163-000	30	- 7	08319-31068-000	41	- 14
01547-06253-000	14	- 12	03241-05203-000	20	- 10	08319-31103-000	3	- 10
01547-06253-000	16	- 11	03241-05203-000	30	- 10	08319-31108-000	35	- 6
01547-06303-000	43	- 10	03241-15163-000	31	- 9	08319-31108-000	26	- 9
01547-06303-000	4	- 4	03241-15163-000	34	- 5	08319-31108-000	36	- 4
01547-06303-000	4	- 16	03241-15163-000	30	- 11	08319-31128-000	44	- 24
01547-06303-000	4	- 24	03242-05169-000	31	- 7	08322-01053-000	44	- 39
01547-06303-000	11	- 6	03511-05163-000	37	- 5	08322-01063-000	44	- 11
01547-06403-000	3	- 3	03541-04163-000	37	- 4	08322-01063-000	44	- 35
01547-06403-000	4	- 5	03541-05163-000	22	- 13	08322-01083-000	41	- 7
01547-06403-000	4	- 17	03541-05203-000	9	- 8	08322-01163-000	26	- 4
01547-06503-000	3	- 4	04111-20208-000	41	- 9	08331-31139-000	5A	- 5
01547-06603-000	4	- 18	04111-20208-000	44	- 40	08331-31259-000	13	- 25
01547-06753-000	3	- 5	04111-25156-000	27	- 9	08332-11059-000	12	- 32
01550-06103-000	40	- 16	04111-30258-000	26	- 3	08332-11066-000	11	- 5
01550-06123-000	23	- 11	04211-09129-000	11	- 7	08341-31039-000	17	- 7
01550-06123-000	28	- 5	04211-09149-000	4	- 14	08361-35066-000	16	- 12
01550-06123-000	34	- 12	04211-09149-000	4	- 3	08361-35066-000	18	- 12
01550-06163-000	23	- 7	04211-11129-000	2	- 4	09100-06078-000	44	- 9
01550-06163-000	28	- 14	04211-11129-000	1	- 5	09103-06247-000	7	- 4
01550-06203-000	10	- 7	04211-13189-000	3	- 2	09103-06501-000	1	- 9
01550-08123-000	4	- 8	06111-06004-000	33	- 6	09103-08107-000	39	
01550-08163-000	27	- 3	07130-06163-000	5A	- 9	09103-10110T000	3	- 9
01550-08203-000	27	- 22	08110-62017-000	44	- 17	09103-10126-000	36	- 2
01550-10453-000	33	- 3	08110-62030-000	13	- 8	09103-10229-000	42	- 4
02112-05123-000	36	- 16	08110-62030-000	13	- 14	09103-10333T000	42	- 3

PART NO.	FIG. NO.	REF.NO.	PART NO.	FIG. NO.	REF.NO.	PART NO.	FIG. NO.	REF.NO.
09105-08011-000	44	- 26	09160-14005-000	12	- 25	09208-07005-000	12	- 31
09106-05028T000	6	- 7	09164-07001-000	24	- 9	09209-05011-000	14	- 31
09108-08265-000	2	- 2	09164-10012-000	6	- 24	09209-11002-000	44	- 37
09111-06001-000	29	- 5	09164-14011-000	12	- 21	09247-10008T000	3	- 11
09111-06041-000	14	- 17	09164-14011-000	12	- 26	09247-12102-000	4	- 19
09111-08013-000	41	- 10	09164-25003-000	13	- 24	09259-26015-000	4	- 21
09127-06018-000	36	- 9	09166-24001-000	33	- 10	09261-02008-000	11	- 3
09136-05065-000	21	- 6	09168-06004-000	3	- 14	09261-03002-000	14	- 11
09136-06002-000	31	- 10	09168-06004-000	7	- 5	09261-04012-000	14	- 8
09136-06002-000	34	- 14	09168-08015-000	4	- 9	09261-07006-000	12	- 8
09136-06004-000	31	- 4	09168-08021-000	1	- 7	09262-15026-000	6	- 11
09136-06009-000	31	- 15	09168-10002-000	3	- 12	09262-15032-000	12	- 38
09136-06017-000	9	- 9	09168-10002-000	3	- 8	09262-25122-000	5	- 8
09139-05057-000	24	- 7	09168-10033-000	40	- 12	09262-35063-000	5	- 7
09140-08008-000	41	- 8	09168-12002-000	4	- 20	09263-13003-000	13	- 6
09140-12046-000	12	- 36	09169-06028T000	31	- 6	09263-13003-000	13	- 15
09140-14022-000	12	- 19	09169-06060-000	34	- 10	09263-20061-000	5A	- 7
09140-14022-000	12	- 24	09169-08011-000	44	- 27	09263-28034-0B0	5	- 6
09148-05038-000	20	- 14	09180-06010-000	14	- 10	09280-12004-000	12	- 39
09148-05038-000	31	- 11	09180-08151-000	27	- 16	09280-13007-000	11	- 13
09148-05038-000	22	- 9	09180-08151T000	10	- 13	09280-17003-000	4	- 7
09148-05038-000	30	- 4	09180-08212-000	10	- 8	09280-21008-000	14	- 32
09148-05038-000	34	- 6	09180-10148-000	35	- 3	09280-22008-000	4	- 22
09148-05038-000	43	- 3	09180-12143-000	44	- 15	09280-26009-000	1	- 22
09150-06001-000	44	- 38	09180-12152-000	14	- 24	09280-50007-000	1	- 12
09159-06024-000	36	- 15	09181-14167-000	15	- 11	09280-54001-000	11	- 12
09159-08049-000	1	- 6	09181-17018-000	12	- 22	09280-84002-000	1	- 17
09160-05033-000	31	- 8	09181-18002-000	12	- 7	09283-14009-000	15	- 7
09160-05045-000	30	- 9	09181-25051-000	5	- 15-1	09283-17025-000	13	- 16
09160-05045-000	22	- 12	09181-25052-000	5	- 15-2	09285-12002-000	14	- 25
09160-06030-000	14	- 9	09181-25053-000	5	- 15-3	09285-25003-000	44	- 22
09160-06109-000	43	- 12	09181-25054-000	5	- 15-4	09289-05008-000	6	- 23
09160-06126-000	36	- 13	09181-25055-000	5	- 15-5	09319-10023-000	41	- 2
09160-06129-000	10	- 19	09181-25056-000	5	- 15-6	09320-08018-000	30	- 6
09160-08032T000	10	- 15	09181-25057-000	5	- 15-7	09320-09016-000	30	- 8
09160-08032T000	27	- 18	09181-25058-000	5	- 15-8	09320-09016-000	22	- 10
09160-08121-000	1	- 8	09181-25059-000	5	- 15-9	09320-09026-000	31	- 14
09160-08149-000	10	- 10	09181-25060	5	- 15-10	09320-12026-000	10	- 14
09160-10085-000	12	- 37	09181-25061	5	- 15-11	09320-12048-000	10	- 9
09160-10506-000	41	- 15	09181-25062	5	- 15-12	09352-40703-230	28	- 10
09160-12061-000	41	- 13	09181-25063	5	- 15-13	09360-10042-000	40	- 11
09160-13006-000	13	- 5	09181-25179	5	- 15-14	09364-08003T000	3	- 6
09160-13006-000	13	- 13	09181-25181	5	- 15-15	09380-17007-000	13	- 7
09160-13010-000	5A	- 4	09200-06041-000	27	- 8	09380-17007-000	13	- 17
09160-14005-000	12	- 20	09206-08008-000	6	- 5	09381-10004-000	1	- 2

5



5



PART NO.	FIG. NO.	REF.NO.	PART NO.	FIG. NO.	REF.NO.	PART NO.	FIG. NO.	REF.NO.	PART NO.	FIG. NO.	REF.NO.	PART NO.	FIG. NO.	REF.NO.	PART NO.	FIG. NO.	REF.NO.	
09381-14001-000	5	- 14	11144-09G00-000	1	- 15	12843-27A00-000	6	- 14	13684-09400-000	8	- 33	23121-09G00-000	12	- 27	30000			
09401-06101-000	28	- 13	11175-09400-000	1	- 11	12861-09D00-000	6	- 15	13700-20G30-000	9	- 1	23221-23F00-000	12	- 28				
09401-09403-000	28	- 12	11210-20G10-000	2	- 1	12871-30A00-000	6	- 16	13741-20G00-000	9	- 2	23222-21D10-000	12	- 29				
09401-10409-000	3	- 16	11241-20G00-000	2	- 3	12911-09G20-000	6	- 17	13780-09G00-000	9	- 3	23223-23F00-000	12	- 30				
09401-10409-000	28	- 9	11300-20840-000	3	- 1-1	12912-20G20-000	6	- 18	13824-18910-000	9	- 5	23230-20G00-000	12	- 33				
09404-06429-000	18	- 6	11300-20850-000	3	- 1-2	12921-20G00-000	6	- 19	13826-09G30-000	9	- 7	23234-23F00-000	12	- 34		31100-20G00-000	16	- 1
09404-06431-000	3	- 17	11332-20G00-000	3	- 15	12931-09G00-000	6	- 20	13827-09G00-000	1	- 20	23250-20G00-000	12	- 35		31130-20G00-000	16	- 2
09407-18402-000	23	- 3-1	11341-20G40-000	4	- 1	12932-09G00-000	6	- 21	13871-09G00-000	9	- 4	24120-20G00-000	13	- 1		31131-20G00-000	16	- 3
09407-25401-000	36	- 19	11351-20G30-000	4	- 12	12933-09G00-000	6	- 22	13881-09G30-000	9	- 6	24130-20G00-000	13	- 9		31135-19D00-000	16	- 4
09407-25401-000	23	- 3-2	11361-23FA0-000	4	- 23	12951-20G00-000	6	- 10	14150-20G20-000	10	- 4	24221-20G00-000	13	- 2		31143-49040-000	16	- 5
09440-02002-000	12	- 9	11383-20GA0-000	4	- 10	12954-09G10-000	6	- 6	14181-09D00-000	10	- 1	24231-20G00-000	13	- 3	31151-20G00-000	16	- 6	
09440-04010-000	14	- 33	11482-20G00-000	4	- 2	12955-20G00-000	6	- 8	14181-25G00-000	10	- 6	24241-20G00-000	13	- 4	31156-98E00-000	16	- 7	
09440-09004-000	44	- 36	11483-20G00-000	4	- 13	13110-20G10-000	1	- 21	14310-20G20-000	10	- 5	24311-20G00-000	13	- 10	31170-19B10-000	16	- 8	
09440-18031-000	12	- 17	11971-09403-000	4	- 6	13129-20G00-000	1	- 24	14770-20G00-000	27	- 21	24331-20G00-000	13	- 11	31264-13E00-000	16	- 9	
09440-19025-000	12	- 40	12100-20G10-000	5	- 10-1	13200-20G70-000	8	-	14780-23FA0-000	10	- 17	24341-20G00-000	13	- 12	31280-20G00-000	16	- 10	
09440-30007-000	15	- 8	12100-20G10-050	5	- 10-2	13247-25G00-000	8	- 31	14783-23FA0-000	10	- 18	24741-20A10-000	13	- 18	31800-31C00-000	18	- 11	
09443-05019-000	14	- 20	12100-20G10-100	5	- 10-3	13249-30A10-000	8	- 2	16321-23F00-000	5	- 9	25211-23F10-000	14	- 1	32100-20G50-000	17	-	
09443-06083-000	23	- 9	12111-20G10-000	5	- 11-1	13250-30D00-000	8	- 20	16331-09G00-000	11	- 2	25221-23F10-000	14	- 2	32100-20G60-000	17	-	
09443-12033-000	26	- 12	12111-20G10-050	5	- 11-2	13254-20010-000	8	- 13	16400-09G20-000	11	- 1	25311-20G00-000	14	- 5	32101-20G50-000	17	- 1-1	
09443-14022-000	26	- 10	12111-20G10-100	5	- 11-3	13258-30A00-000	8	- 12	16510-05240-000	11	- 9	25312-20G00-000	14	- 6	32101-20G60-000	17	- 1-2	
09444-26027-000	14	- 21	12140-20G20-000	5	- 12-1	13261-09G20-000	8	- 1	16512-09G00-000	11	- 10	25350-20G00T00	14	- 15	32102-20G50-000	17	- 2-1	
09448-38004-000	15	- 9	12140-20G20-050	5	- 12-2	13267-09G20-000	8	- 24	16519-09G00-000	11	- 14	25355-20G10-000	14	- 16	32102-20G60-000	17	- 2-2	
09471-12103-000	20	- 7	12140-20G20-100	5	- 12-3	13267-20G00-000	8	- 25	16520-09402-000	11	- 8	25361-23F00-000	13	- 23	32371-20G00-000	17	- 3	
09471-12108-000	20	- 6	12151-20G00-000	5	- 13	13268-09G20-000	8	- 27				25381-20G00-000	14	- 7	32800-47E00-000	18	- 1	
09471-12119-000	22	- 7	12160-20820-000	5	- 3	13268-35010-000	8	- 26				25411-13A10-000	14	- 3	32900-09G30-000	18	- 3	
09471-12203-000	21	- 5	12161-20G00-0C0	5	- 4	13278-29C50-000	8	- 32				25421-35420-000	14	- 4	32980-20G00-000	18	- 4	
09471-12203-000	22	- 8	12211-20G00-000	5	- 5	13291-29900-000	8	- 28				25510-20G00-000	14	- 22	33410-20G00-000	18	- 5	
09471-23FA0-000	21	- 4	12221-20G00-000	5	- 1	13295-29900-000	8	- 29				25520-20G01-000	14	- 19	33510-20G00-000	18	- 9	
09481-10501-000	23	- 2	12261-20G00-000	5	- 2-1	13341-20G00-000	8	- 19				25600-23F20-000	14	- 27	33541-09G00-000	18	- 8	
09482M00568-000	1	- 10	12261-20G10-000	5	- 2-2	13372-09G10-000	8	- 14				25652-16500-000	14	- 28	33542-38B00-000	18	- 10	
09491-97009-000	8	- 17	12601-20G00T000	5A	- 6	13382-23F00-000	8	- 6	21102-09G00-000	12	- 1	25671-20G00-000	14	- 23	33610-20G00-000	19	- 1-1	
09492-12003-000	8	- 16	12611-20G00-000	5A	- 1	13383-20G20-000	8	- 8	21111-20G30-000	12	- 2	26211-23F00-000	15	- 1	33610-20GA0-000	19	- 2-1	
			12612-23F00-000	5A	- 2	13385-09G10-000	8	- 18	21114-23F00-000	12	- 3	26221-30A00-000	15	- 2	33651-20G00-000	19	- 2	
			12614-05F10-000	5A	- 8	13387-23F00-000	8	- 11	21119-23F20-000	12	- 4	26231-09G00-000	15	- 3	33652-28C00-000	19	- 3	
			12710-20G00-000	6	- 1	13411-01010-000	8	- 23	21200-20G10-000	12	- 10	26232-09401-000	15	- 4	33652-35400-000	30	- 13	
			12711-20G00-000	6	- 2	13417-01010-000	8	- 22	21251-23F20-000	12	- 11	26233-09400-000	15	- 5	33652-38A10-000	19	- 4	
			12725-20G00-000	6	- 9	13418-12F40-000	8	- 9	21411-20G00-000	12	- 12	26241-20G01-000	15	- 6	33810-20G00-000	19	- 6	
			12741-20G00-000	6	- 4	13418-43410-000	8	- 21	21441-23F00-000	12	- 13	26300-09G10-000	15	- 13	33860-30D00-000	19	- 5	
			12760-20G00-000	7	- 1	13481-23F00-000	8	- 7	21451-21D40-000	12	- 14	26352-09D10-000	15	- 14	34100-09GE0-000	20	- 1-1	
			12771-20G00-000	7	- 2	13533-98410-000	8	- 10	21461-09G00-000	12	- 15	27511-09G00-000	13	- 20	34100-09GH0-000	20	- 1-2	
			100000															
11110-20G4-000	1	- 1	12811-09G00-000	7	- 3	13551-20G20-000	8	- 5	21465-09G00-000	12	- 16	27512-09G00-000	13	- 21	34111-09G00-000	20	- 2	
11115-09G10-000	1	- 3	12830-09G00-000	7	- 6	13573-20G20-000	8	- 4	21482-09G00-000	12	- 18	27600-20910-100	13	- 26	34112-09G00-000	20	- 3	
11121-23F01-000	1	- 16	12837-20G00-000	7	- 7	13601-04128-000	8	- 15	21501-20G10-P14	12	- 23			34113-09G00-000	20	- 4		
11134-09G00-000	1	- 14	12840-20G10-000	6	- 12	13601-04148-000	8	- 30	21631-21D02-000	12	- 5			34170-09G60-000	20	- 5-1		
11141-20G00-000	1	- 4	12842-49201-000	6	- 13	13683-34A10-000	8	- 3	21652-23F00-000	12	- 6			34170-09G70-000	20	- 5-2		

