

SUZUKI

SUZUKI

PARTS CATALOGUE

SUZUKI ASSEMBLERS MALAYSIA SDN. BHD. (10789-W)

1412, Plot No. 281, Prai Industrial Complex
13600 Prai, P.W., Malaysia
Tel: 04-397 7453, 04-399 0457
Fax: 04-397 7635

Spare Parts Department
Tel: 04-397 7091 Fax: 04-397 7831

Service Department
Tel: 04-397 7314 Fax: 04-397 7441

9900BC25G00C000

FU150SCD BELANG R

9900BC25G00C000



FU150SCD

2009 - 03

1st EDITION



MODEL CODE

FU150SCD

YEAR

MARCH 2009

2-TONE MOTORCYCLE COLOUR NAME & COLOUR CODE

REF. NO	PART NAME	PART NO	PARTS COLOUR CODE	
			Dark Grey (393) + New Titan Black (106)	Autumn Red (157) + New Titan Black (106)
1	COVER FRAME, RH	47111B25G00N	106	106
2	COVER FRAME, LH	47211B25G00N	106	106
3	SHIELD LEG CENTER	48131B25G00N	393	393
4	HOUSING HEADLAMP	51811B25G10N	106	157
5	COVER, Headlamp Lower	51833B25G00N	393	393
6	FENDER FRONT	53111B25G00N	106	157
7	COWLING SIDE RH	94471B25G10N	393	157
8	COWLING SIDE LH	94481B25G10N	393	157

FU150SCD (2-Tone) Dark Grey / New Titan Black



FU150SCD (2-Tone) Autumn Red / New Titan Black



INFORMATION
ILLUSTRATION INDEX

1

ENGINE
TRANSMISSION

2

ELECTRICAL

3

BODY

4

PARTS NUMBER INDEX

5

PREFACE

When it becomes necessary to replace parts on SUZUKI MOTORCYCLES, always use SUZUKI GENUINE PARTS which have passed a strict inspection which guarantees quality performance.

This parts catalogue covers the list of all service parts for SUZUKI FU150SCD

INSTRUCTIONS FOR QUOTING THE CATALOGUE

1. DIMENSIONS

Dimensions of the parts in this catalogue are indicated in unit millimeters.

2. ABBREVIATIONS

Abbreviations used in this catalogue are as follows:

AR	: As required
ASSY	: Assembly
E. No.	: Engine number
F.No.	: Frame number
D	: Diameter of material
ID	: Inside diameter
OD	: Outside diameter
L	: Length
LH	: Left hand side
RH	: Right hand side
~100045	: Up to F.No. A100-A100045
100046~	: From F.No. A100-A100046
<u>12 X 34 X 5.6</u>	Figures in the description column show the dimensions of parts.
ID OD T(or W, L)	
NT	: Number of teeth
OPT	: Optional
OS	: Over size
STD	: Standard
T	: Thickness
US	: Under size
W	: Width

! 12345-56781 (Parts No.): indicates that the parts number was changed to 12345-56781 and new parts numbers are interchangeable with the former ones but the former ones are not interchangeable with new ones.

! 12345-56781 (Parts No.): indicates that the former and new parts are interchangeable with each other and both are usable.

3. **INNER PARTS OF ASSEMBLY**

Parts name with a dot (.) in front as shown in the description column indicates the component of the assembly also available individually.

4. **MODIFICATION NOTICE**

A parts bulletin will be sent to you on all occasions when changes in parts occur, including interchangeable modifications between new parts and old ones.

5. **NOTE**

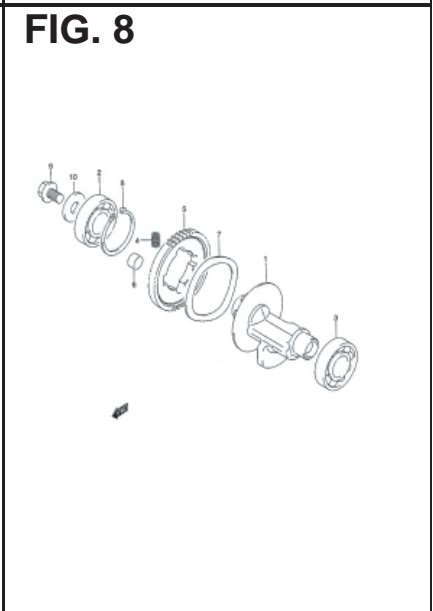
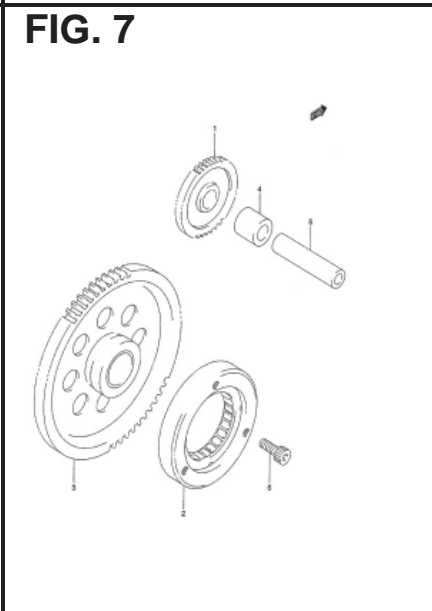
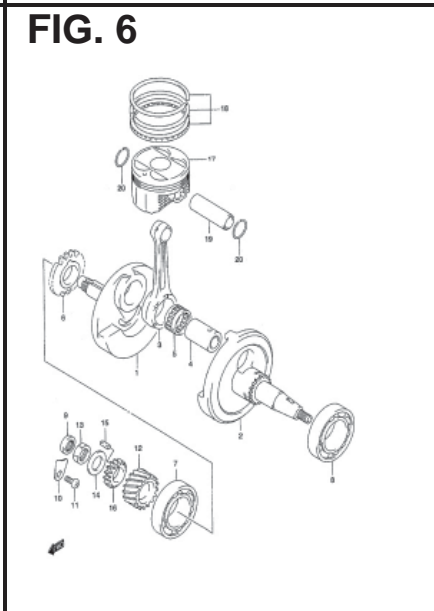
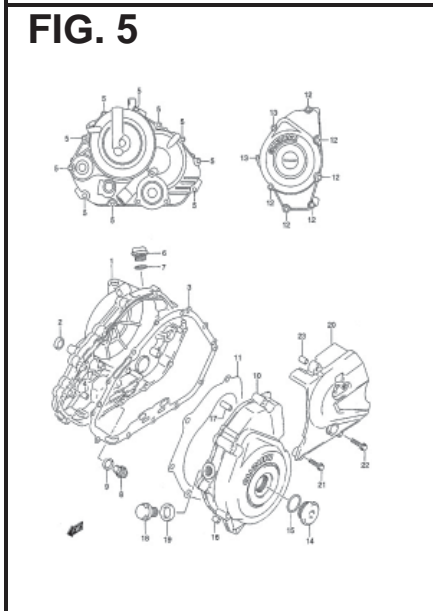
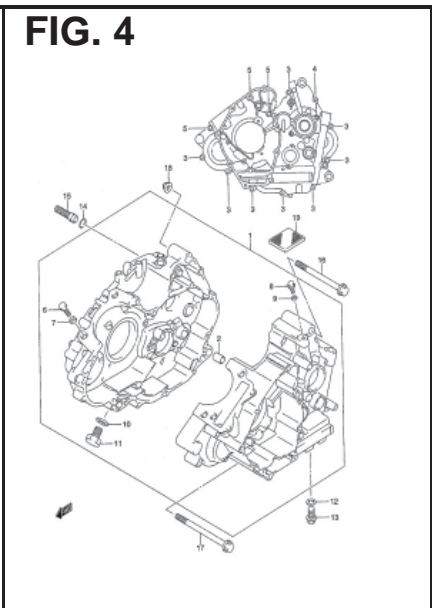
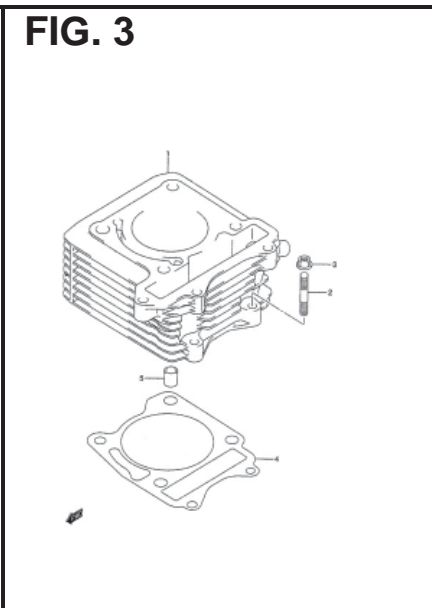
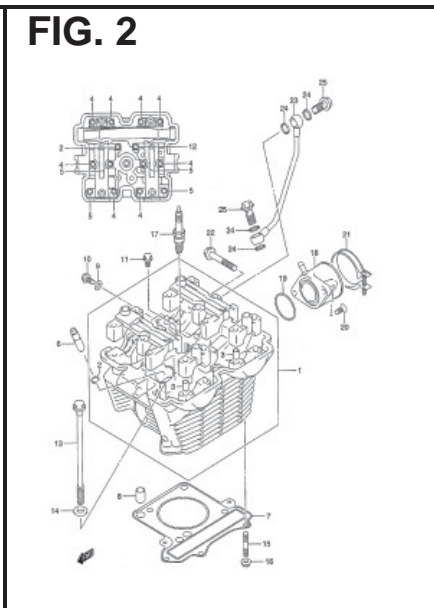
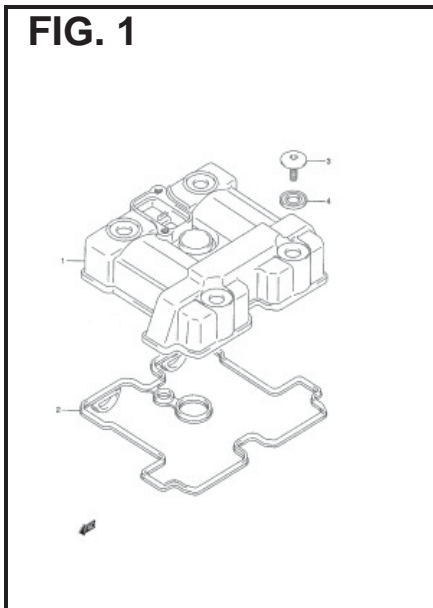
- 5-1 There are some different parts from those of productions models among spare parts for the administrative reasons and common use of them with other models.
- 5-2 In respect of rubber hoses and vinyl tubes, please be sure to use them by cutting off according to the length mentioned on parts catalogue or what is actually required on the vehicle.
- 5-3 Note that the drawings on the illustration on page are for ready reference of spare parts number, not to be used as an assembly manual. When assembling, use "SUZUKI SERVICE MANUAL".

6. **SERIAL FRAME NUMBER**

FU150SCD : PMSBG41C 09YA00001

7. **STD. COLOR CHART**

COLOR NO.	PARTS COLOR DESCRIPTION
106	NEW TITAN BLACK
157	AUTUMN RED
393	DARK GREY



1

FIG. 9

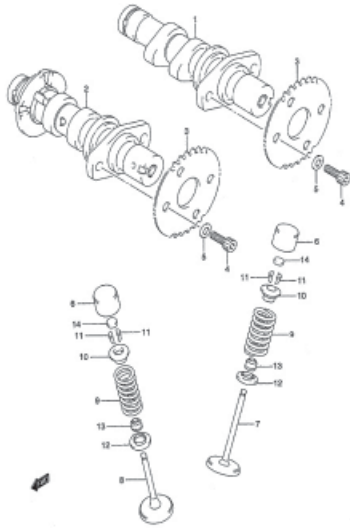


FIG. 10

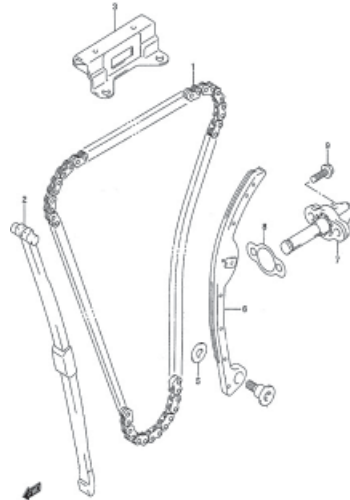


FIG. 11

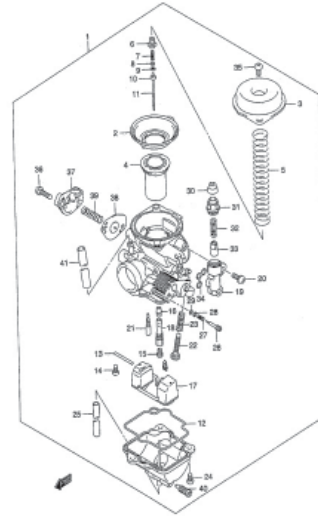


FIG. 12

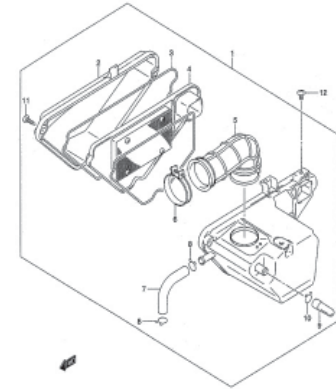


FIG. 13

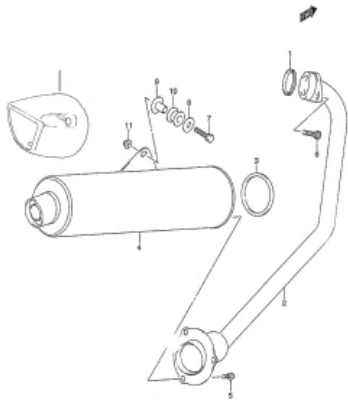


FIG. 14

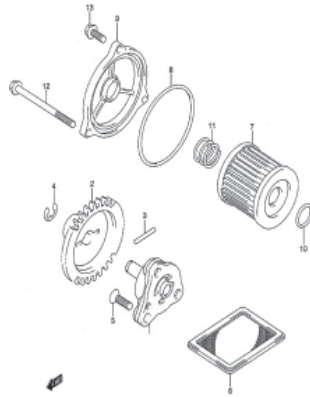


FIG. 15

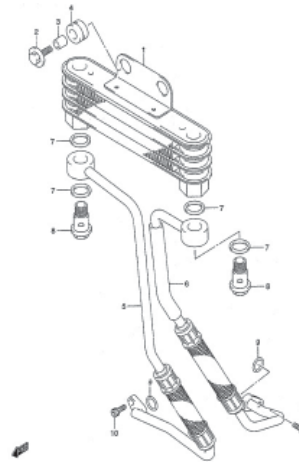


FIG. 16

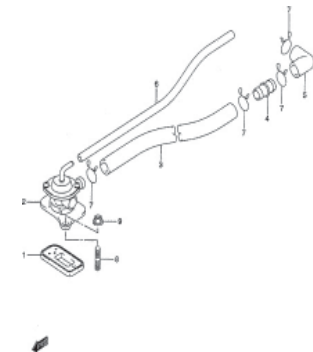


FIG. 17

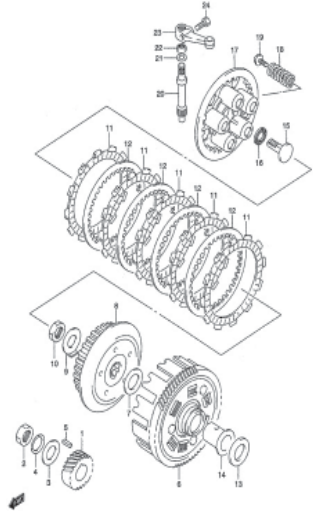


FIG. 18

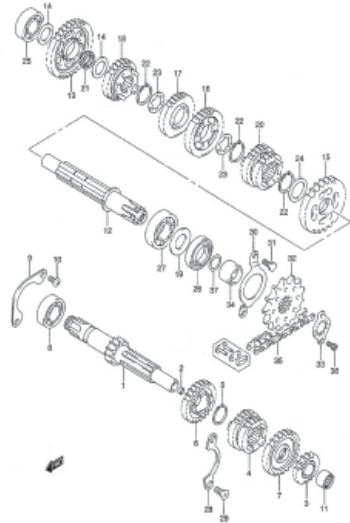


FIG. 19

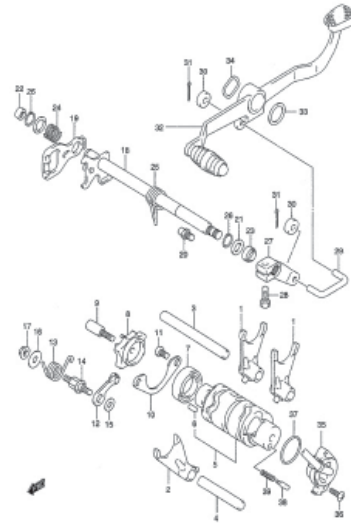


FIG. 20

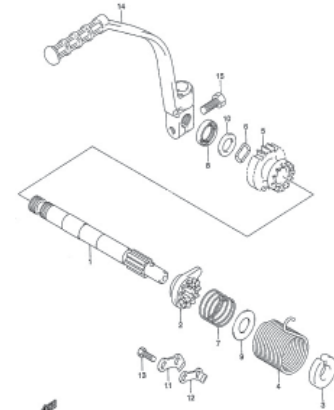


FIG. 21

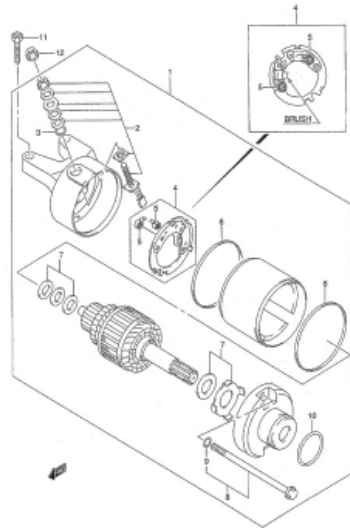


FIG. 22

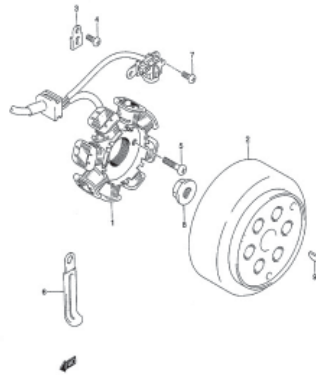


FIG. 23

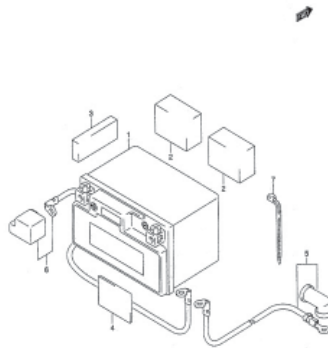
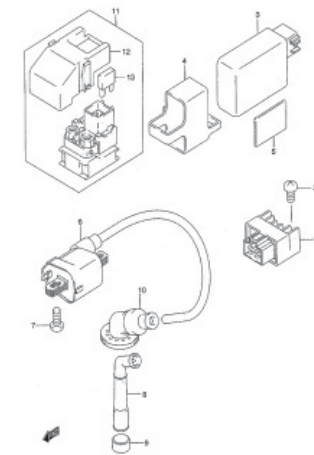


FIG. 24



1

FIG. 25

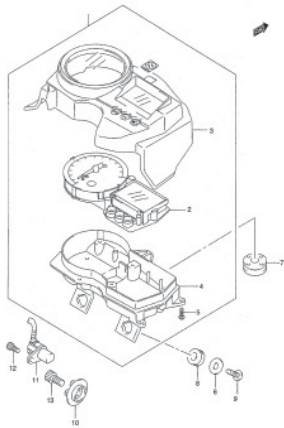


FIG. 26

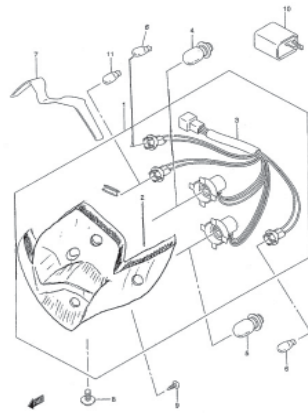


FIG. 27

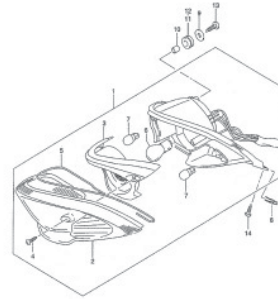


FIG. 28

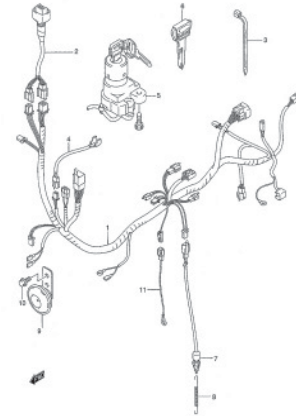


FIG. 29

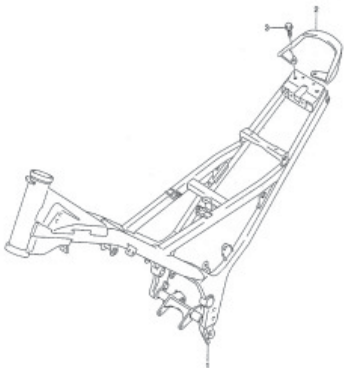


FIG. 30

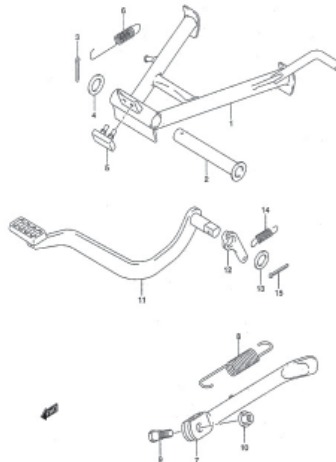


FIG. 31

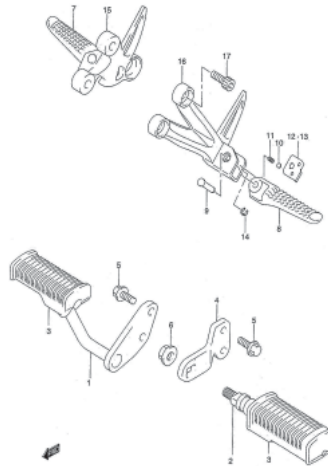


FIG. 32

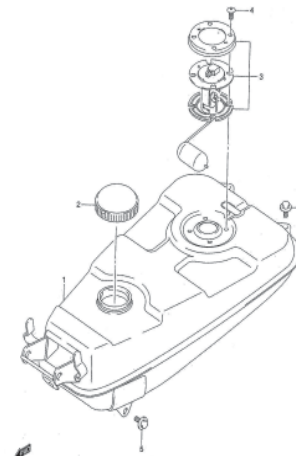


FIG. 33

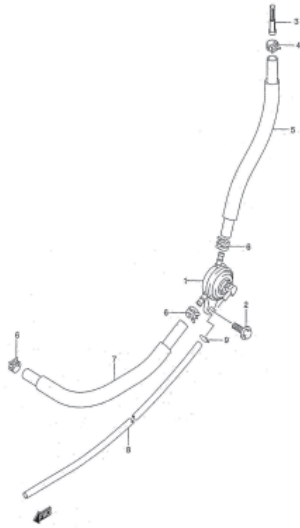


FIG. 34

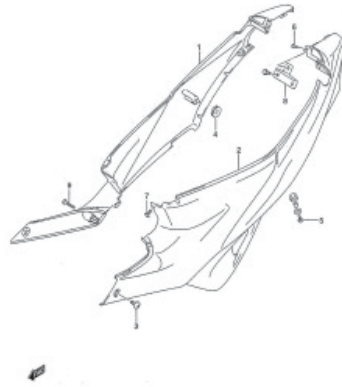


FIG. 35

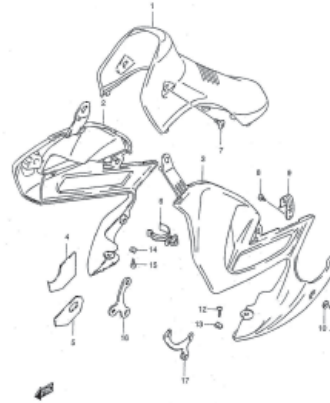


FIG. 36

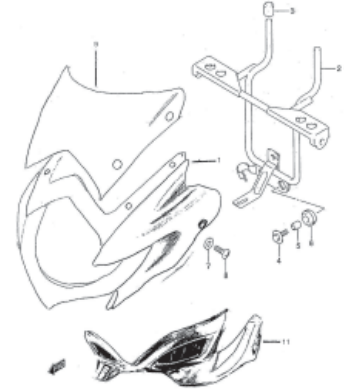


FIG. 37



FIG. 38

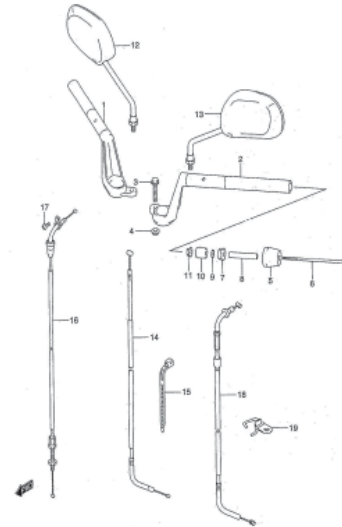


FIG. 39

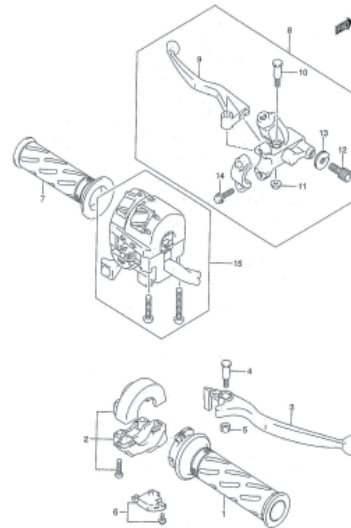
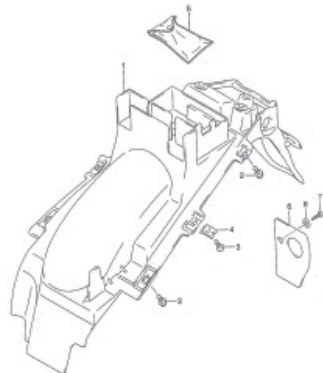


FIG. 40



1

FIG. 41

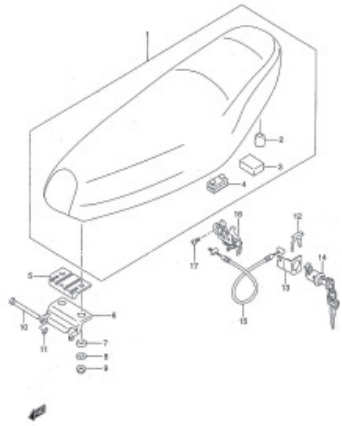


FIG. 42

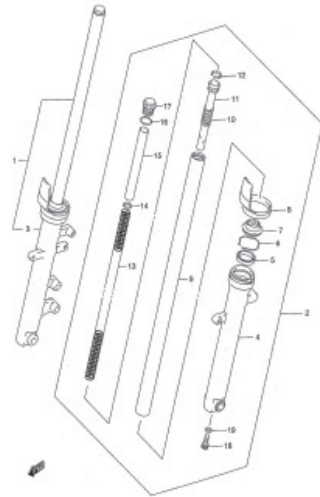


FIG. 43

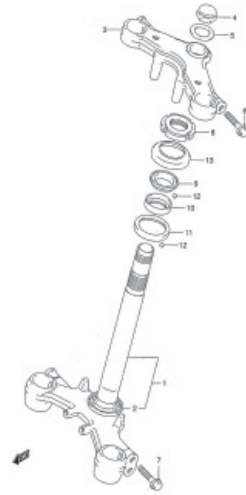


FIG. 44

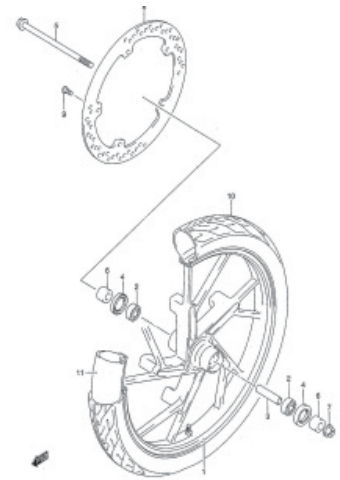


FIG. 45

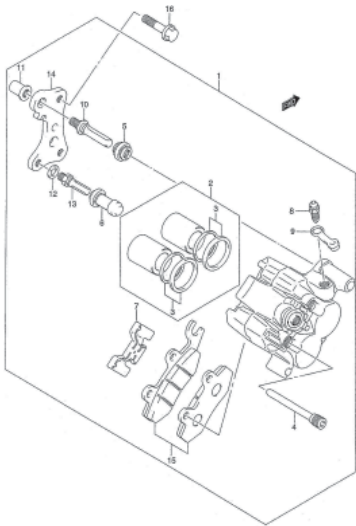


FIG. 46

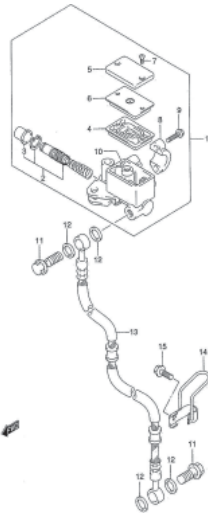


FIG. 47

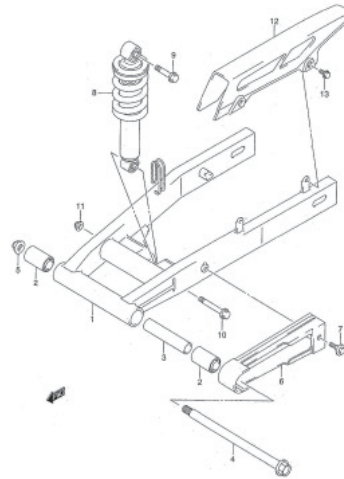


FIG. 48

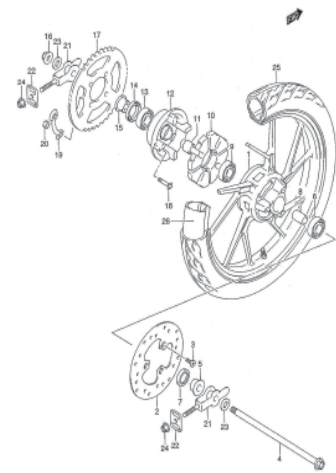


FIG. 49

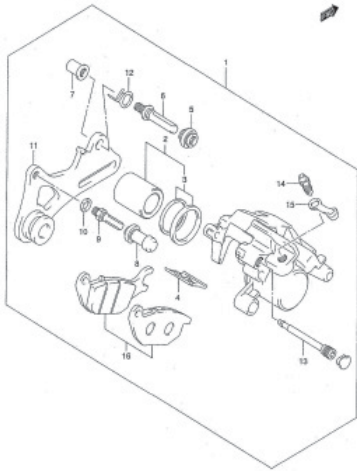


FIG. 50

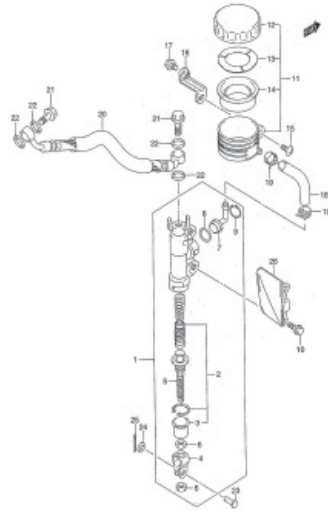


FIG. 51



FIG. 1

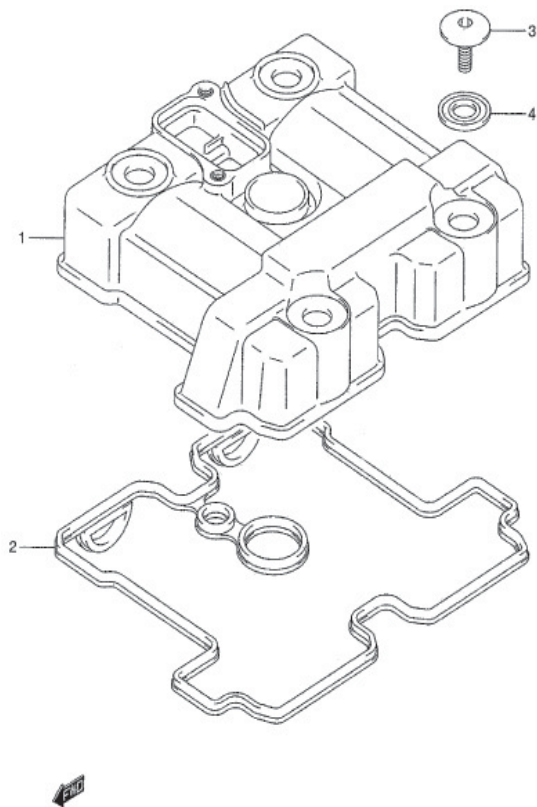


FIG. 1 CYLINDER HEAD COVER

REF NO.	PART NO.	DESCRIPTION	QTY	REMARKS
1	11171A47E50U000	COVER, cylinder head	1	
2	11173-47E50-000	GASKET, cylinder head cover	1	
3	09106-07009-000	BOLT (7 X 17.5)	4	
4	09161-11008-000	CUSHION (10.6 X 25.5 X 1.6)	4	

FIG. 2

2

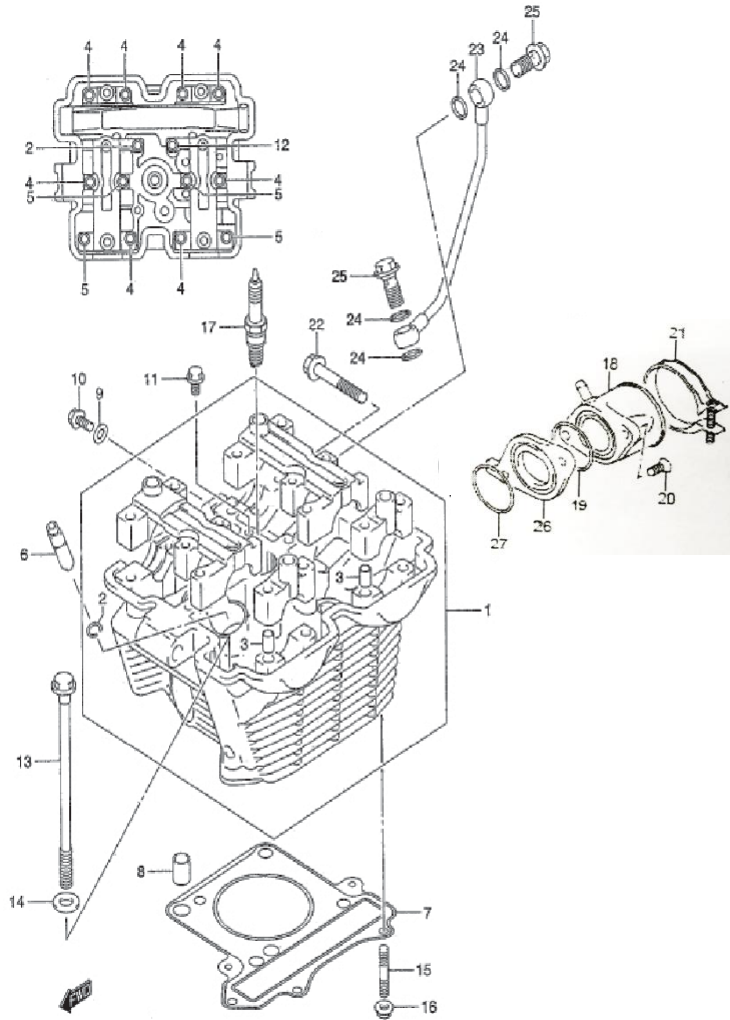


FIG. 2 CYLINDER HEAD

REF NO.	PART NO.	DESCRIPTION	QTY	REMARKS
1	11100-25G00-0T0	HEAD ASSY, cylinder	1	
2	09381-10004-000	SNAP RING	4	
3	09206-08001-000	PIN (6.2 X 8 X 11)	8	
4	09103-06132-000	BOLT (6 X 41)	8	
5	09103-06108-000	BOLT	4	
6	11115-33D71-000	GUIDE, valve	4	
7	11141-25G00-000	GASKET, cylinder head	1	
8	04211-11169-000	PIN	2	
9	09168-06004-000	GASKET (6.2 X 11 X 1.2)	1	
10	01550-0612B-000	BOLT	1	
11	01550-0612B-000	BOLT	1	
12	09103-06108-000	BOLT	2	
13	09103-08305-000	BOLT	4	
14	09168-08021-000	GASKET	4	
15	01421B0625BN000	BOLT	3	
16	08316-1006B-000	NUT	3	
17	09482B00456N000	SPARK PLUG (CR8E)	1	
18	13110-25G00-000	PIPE ASSY, INTAKE	1	
19	09280-35001-000	O RING	1	
20	02112B0616BN000	SCREW	2	
21	09402-44208-000	CLAMP	1	
22	09103-08289-000	BOLT	1	
23	11280-47E00-000	PIPE, head oil	1	
24	09168-10012-000	GASKET	4	
25	09360-10047-000	UNION BOLT	2	
26	13128-25G00-000	INSULATOR	1	
27	09280-35001-000	O RING(D:1.9, ID:34.6)	1	

FIG. 3

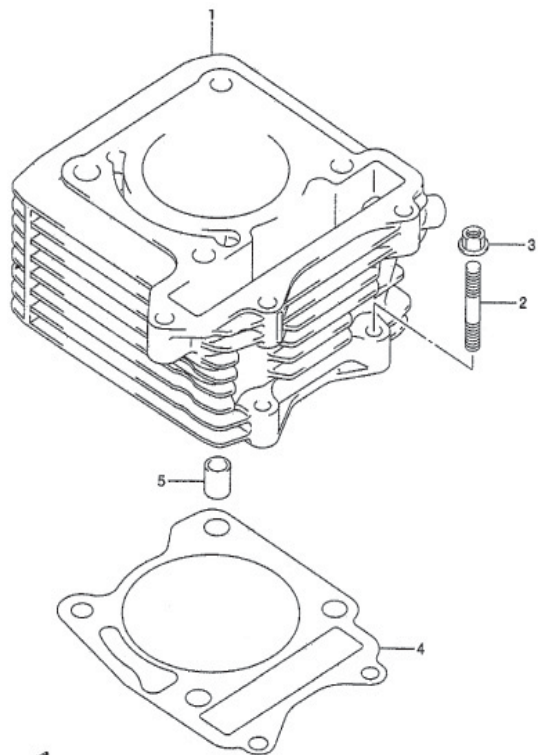


FIG. 3 CYLINDER

REF NO.	PART NO.	DESCRIPTION	QTY	REMARKS
1	11211-25G00-0F0	CYLINDER	1	
2	01421B0625BN000	STUD BOLT	2	
3	08316-1006B-000	NUT	2	
4	11241B25G10N000	GASKET, cylinder	1	
5	04211-11129-000	PIN	2	

FIG. 4

2

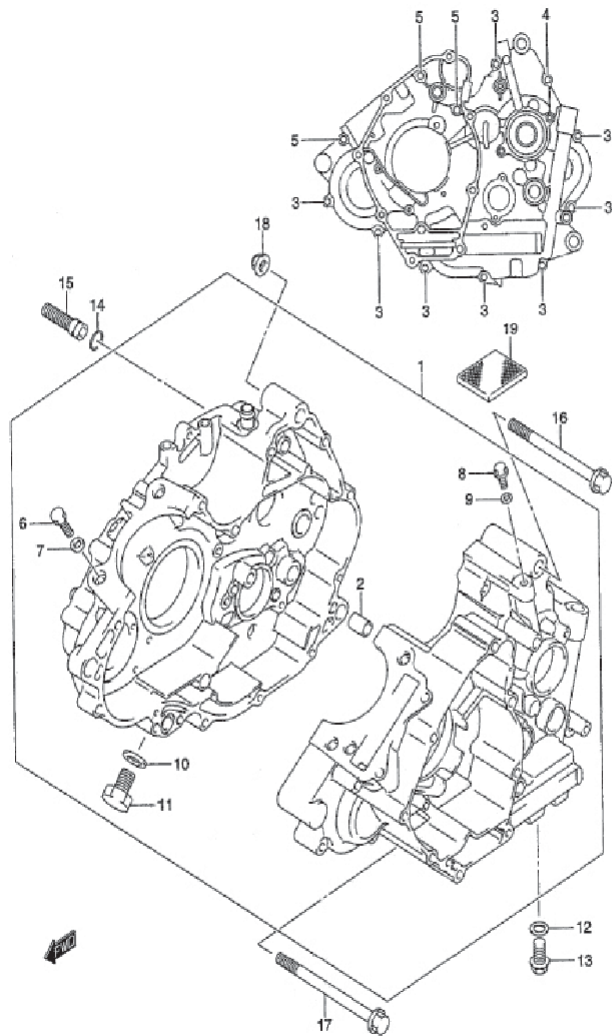


FIG. 4 CRANKCASE

REF NO.	PART NO.	DESCRIPTION	QTY	REMARKS
1	11300A25G10U000	CRANKCASE ASSY	1	
2	04211-13189-000	PIN	2	
3	01547-0640B-000	BOLT	8	
4	01547-06407-000	BOLT	1	
5	01547-06653-000	BOLT	3	
6	09247-12103-000	PLUG, breather (12 X 10)	1	
7	09168-12021-000	GASKET	1	
8	01550-0612B-000	PLUG, oil gallery mission	1	
9	09168-06004-000	GASKET	1	
10	09168-12021-000	GASKET	2	
11	09247-12103-000	PLUG (12 X 10)	2	
12	09168-12002-000	GASKET	1	
13	09247-12106-000	PLUG, oil drain	1	
14	09280-04004-000	O RING	1	
15	09493-24012-000	JET, oil gallery	1	
16	09103-10052-000	BOLT	1	
17	09103-10148-000	BOLT	1	
18	08319-31107-000	NUT	2	
19	11186B25G10N000	SEPARATOR, oil breather	1	

FIG. 5

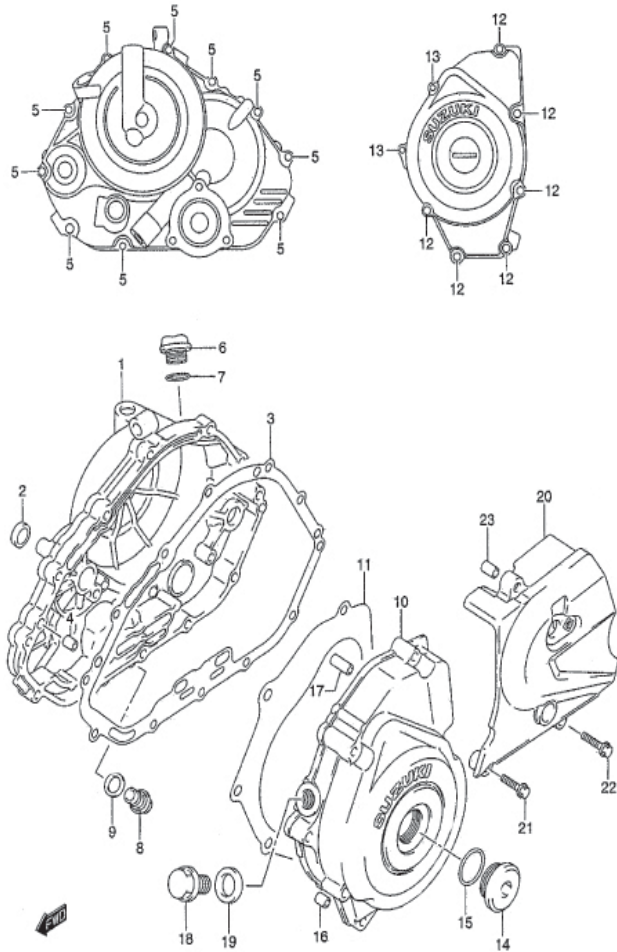


FIG. 5 CRANKCASE COVER

REF NO.	PART NO.	DESCRIPTION	QTY	REMARKS
1	11340A47E00U000	COVER, clutch	1	
2	11971-45010-000	LENS OIL, level check	1	
3	11482A25G00U000	GASKET, clutch cover	1	
4	04211-09149-000	PIN	2	
5	01547-0630B-000	BOLT	10	
6	11342-25G00-000	PLUG, oil filler	1	
7	09280-17003-000	O RING	1	
8	09248-14011-000	PLUG	1	
9	09168-14002-000	GASKET	1	
10	11351A47E10U000	COVER, magneto	1	
11	11483M47E00-000	GASKET, magneto cover	1	
12	01547-0635B-000	BOLT	7	
13	01547B06503N000	BOLT	1	
14	09259-26013-000	PLUG	1	
15	09280-22008-000	O RING	1	
16	04211-09149-000	PIN	1	
17	09206-13003-000	PIN	1	
18	09247-14026-000	PLUG	1	
19	09168-14002-000	GASKET	1	
20	11360B25G00N000	COVER, engine sprocket	1	
21	01547B06253N000	BOLT	1	
22	01547-0630B-000	BOLT	2	
23	04211-09149-000	PIN	2	

FIG. 6

2

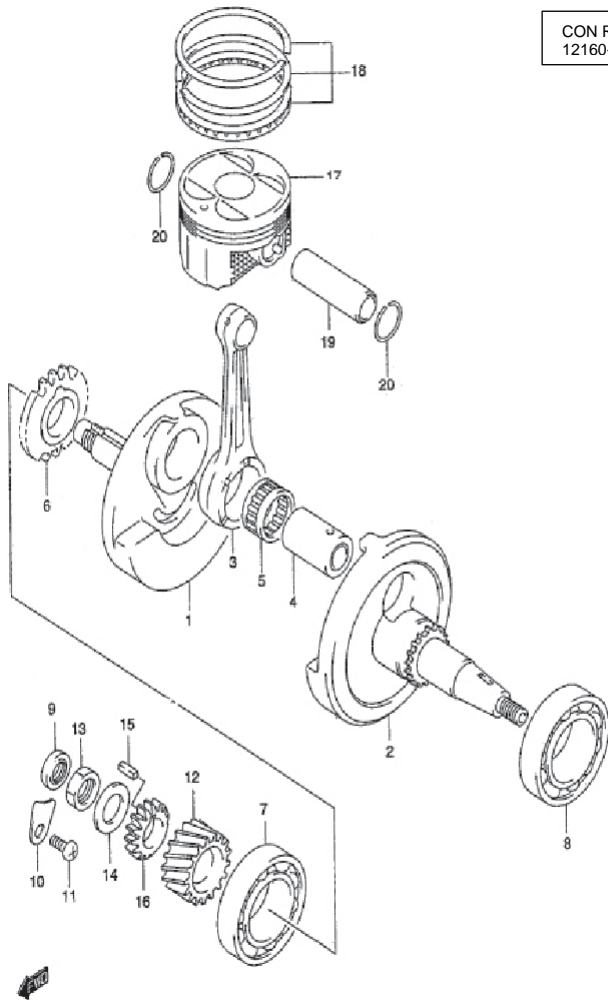


FIG. 6 CRANKSHAFT

REF NO.	PART NO.	DESCRIPTION	QTY	REMARKS
1	12220B25GA0N000	CRANKSHAFT RH	1	
2	12261B25GA0N000	CRANKSHAFT LH	1	
3	12161B25G20N0B0	ROD, connecting	1	
4	12210-25G00-000	PIN, crank	1	
5	09263-30061-0B0	BEARING	1	
6	12661-25G00T000	GEAR, balancer drive	1	
7	09262-28035-000	BEARING, RH	1	
8	09262-35038-000	BEARING, LH	1	
9	09282-12L01-000	OIL SEAL	1	
10	24742-18A00-000	RETAINER, bearing	1	
11	02112B0612BN000	SCREW	1	
12	21111-25G00T000	GEAR, primary drive	1	
13	09140-16019-000	NUT	1	
14	09164-16005-000	WASHER	1	
15	09421-04004-000	KEY	1	
16	16321-47E00-000	GEAR, oil pump drive	1	
17	12111-25G00-0F0	PISTON	1	
18	12140-25G00-000	RING SET, piston	1	
19	12151-25G00-000	PIN, piston	1	
20	09381-16001-000	CIRCLIP	2	

FIG. 7

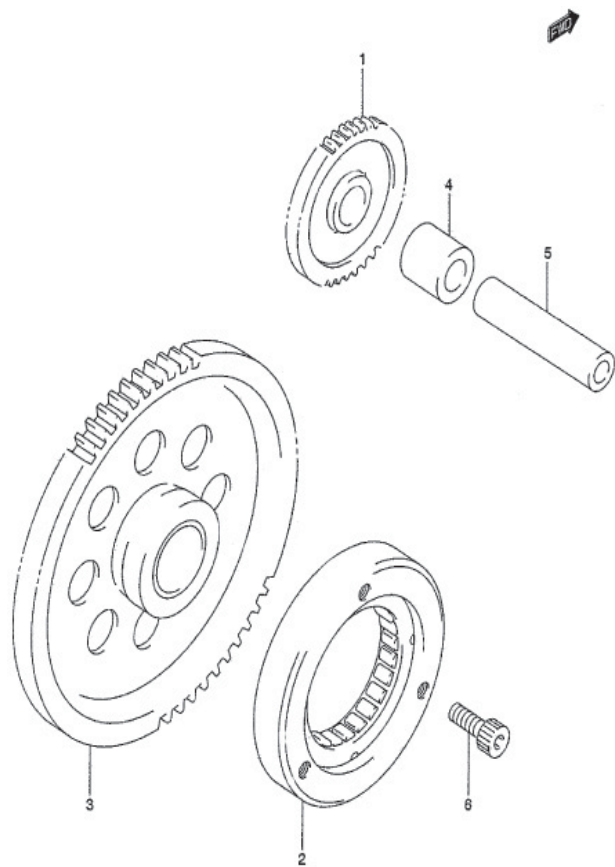


FIG. 7 STARTER CLUTCH

REF NO.	PART NO.	DESCRIPTION	QTY	REMARKS
1	12611-25G00-000	GEAR, starter idle	1	
2	12614-25G00-000	CLUTCH, starter	1	
3	12620B25G00N000	GEAR, starter clutch	1	
4	09180-13007-000	SPACER	1	
5	09206-13003-000	PIN	1	
6	07130-0616B-000	BOLT	3	

FIG. 8

2

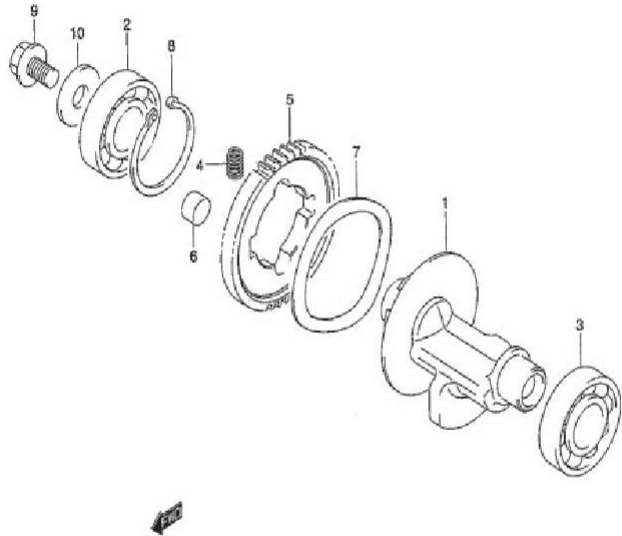


FIG. 8 CRANKBALANCER

REF NO.	PART NO.	DESCRIPTION	QTY	REMARKS
1	12650B25G11N000	ENGINE BALANCER, crank	1	
2	09262-20137-000	BEARING RH	1	
3	09262-20121-000	BEARING LH	1	
4	12663B47E50N000	SPRING	2	
5	12666-25G00T000	GEAR	1	
6	12686-25G00-000	DAMPER	2	
7	09164-58002-000	WASHER NO.1	1	
8	09380-38005-000	CIRCLIP	1	
9	01550-1016B-000	BOLT	1	
10	08211-10285-000	WASHER	1	

FIG. 9

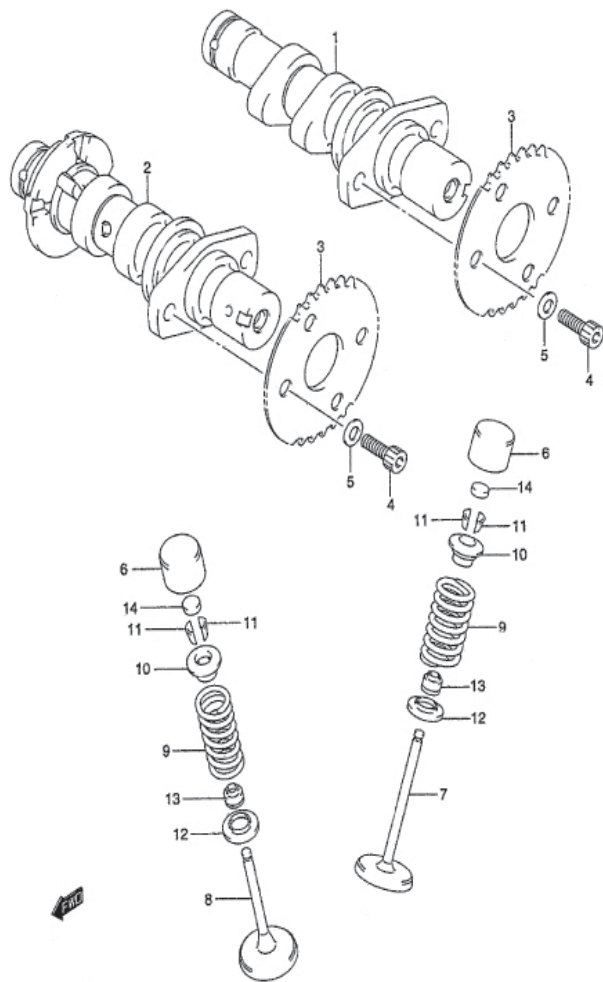


FIG. 9 CAM SHAFT/VALVE

REF NO.	PART NO.	DESCRIPTION	QTY	REMARKS
1	12710-25G01-000	CAM SHAFT, intake	1	
2	12720-25G01-000	CAM SHAFT, exhaust	1	
3	12741-25G00-000	SPROCKET, cam shaft	2	
4	09106-05027-000	BOLT	4	
5	08322-0105B-000	WASHER	4	
6	12891-25G00-000	TAPPET	4	
7	12911-16E00-000	VALVE, intake	2	
8	12912-16E00-000	VALVE, exhaust	2	
9	12921-47E00-000	SPRING, valve	4	
10	12931-25G00-000	RETAINER, valve spring	4	
11	12932-32C00-000	COTTER, valve	8	
12	12933-16E00-000	SEAT, valve spring	4	
13	09289-04002-000	OIL SEAL	4	
14-1	12892-05C00-120	SHIM, tappet (T:1.20)	4	
14-2	12892-05C00-125	SHIM, tappet (T:1.25)	4	
14-3	12892-05C00-130	SHIM, tappet (T:1.30)	4	
14-4	12892-05C00-135	SHIM, tappet (T:1.35)	4	
14-5	12892-05C00-140	SHIM, tappet (T:1.40)	4	
14-6	12892-05C00-145	SHIM, tappet (T:1.45)	4	
14-7	12892-05C00-150	SHIM, tappet (T:1.50)	4	
14-8	12892-05C00-155	SHIM, tappet (T:1.55)	4	
14-9	12892-05C00-160	SHIM, tappet (T:1.60)	4	
14-10	12892-05C00-165	SHIM, tappet (T:1.65)	4	
14-11	12892-05C00-170	SHIM, tappet (T:1.70)	4	
14-12	12892-05C00-175	SHIM, tappet (T:1.75)	4	
14-13	12892-05C00-180	SHIM, tappet (T:1.80)	4	
14-14	12892-05C00-185	SHIM, tappet (T:1.85)	4	
14-15	12892-05C00-190	SHIM, tappet (T:1.90)	4	
14-16	12892-05C00-195	SHIM, TAPPET (T:1.95)	4	
14-17	12892-05C00-200	SHIM, TAPPET (T:2.00)	4	
14-18	12892-05C00-205	SHIM, TAPPET (T:2.05)	4	
14-19	12892-05C00-210	SHIM, TAPPET (T:2.10)	4	
14-20	12892-05C00-215	SHIM, TAPPET (T:2.15)	4	
14-21	12892-05C00-220	SHIM, TAPPET (T:2.20)	4	

2

FIG. 10

2

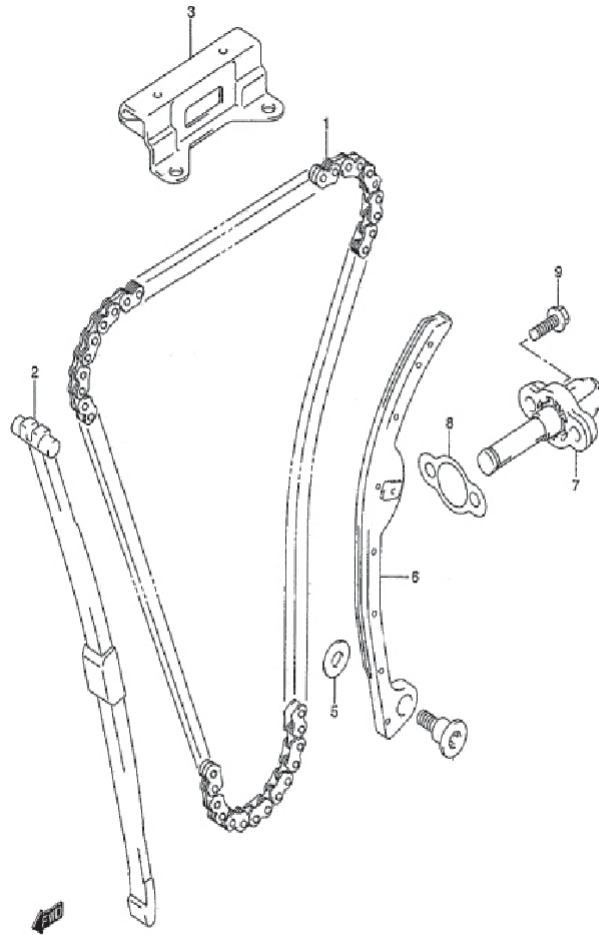


FIG. 10 CAM CHAIN

REF NO.	PART NO.	DESCRIPTION	QTY	REMARKS
1	12760-25G01-000	CHAIN, cam shaft drive	1	
2	12771-25G00-000	GUIDE, cam chain no.1	1	
3	12782-25G00-000	GUIDE, cam chain no.2	1	
4	12812-35C00-000	BOLT, cam chain tensioner	1	
5	08211-06181-000	WASHER	1	
6	12811-25G10-000	TENSIONER, cam chain	1	
7	12830-25G30-000	ADJUSTER ASSY, tensioner	1	
8	12837A25G00U000	GASKET, tensioner adjuster	1	
9	01547-0620B-000	BOLT	2	

FIG.11

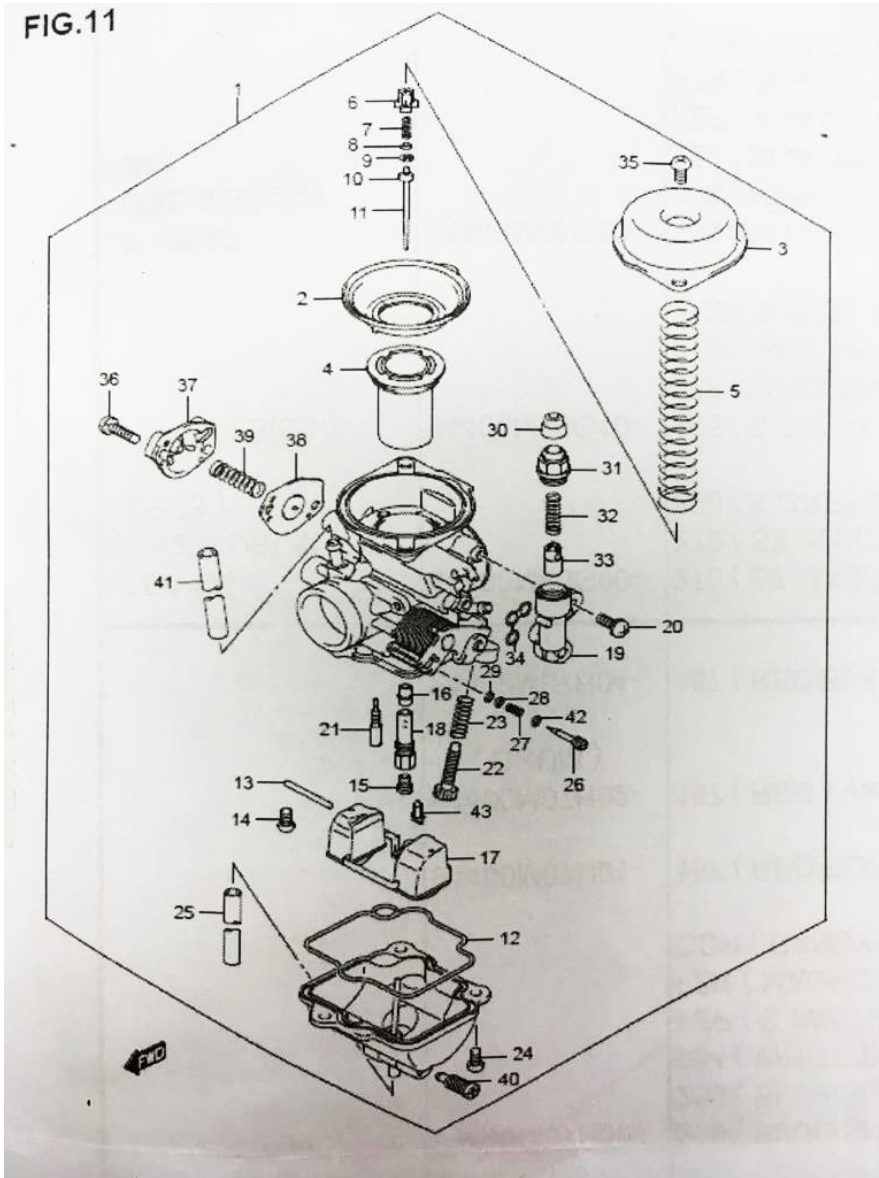


FIG. 11 CARBURETOR

REF NO.	PART NO.	DESCRIPTION	QTY	REMARKS
1-1	13200-25G11-000	CARBURETOR ASSY	1	
1-2	13200B25G30N000	CARBURETOR ASSY-SPECIAL EDITION	1	
2	13507-25G00-000	DIAPHRAGM	1	
3	13502-25G00-000	DIAPHRAGM COVER	1	
4	13500-25G00-000	PISTON, VALVE ASSY	1	
5	13503-25G00-000	SPRING	1	
6	13418-12F40-000	HOLDER	1	
7	13481B33E00N000	SPRING	1	
8	13382-16D30-000	WASHER	1	
9	13394-10010-000	E RING	1	
10	13387-47010-000	RING	1	
11	13383-25G00-000	NEEDLE, JET	1	
12	13258-23F00-000	O RING	1	
13	13254-20010-000	PIN	1	
14	02112-04083-000	SCREW	1	
15	09491-22013-000	JET, MAIN (#130)	1	
16	09494B00540N000	JET, NEEDLE (0-1)	1	
17	13240B47E00N000	FLOAT ASSY	1	
18	13342B25G00N000	HOLDER, JET	1	
19	13412-23F50-000	STARTER BODY ASSY	1	
20	02112-35127-000	SCREW	2	
21	09492-12003-000	JET, PILOT (12.5)	1	
22	13267-20E20-000	SCREW	1	
23	13268-37420-000	SPRING	1	
24	02112-04107-000	SCREW	3	
25	13684-47E00-000	HOSE	1	
26	13279-23F20-000	ADJUSTER	1	
27	13268-47070-000	SPRING	1	
28	13291-29900-000	WASHER	1	
29	13295-29900-000	O RING	1	
30	13681-04010-000	CAP	1	
31	13418-43410-000	GUIDE HOLDER	1	
32	13417-01010-000	SPRING	1	
33	13411B01010N000	PLUNGER ASSY	1	
34	13258-23F10-000	O RING	1	
35	02112-05087-000	SCREW	2	
36	13601-04148-000	SCREW	2	
37	13502B10F00N000	COVER ASSY	1	
38	13480-10F00-000	DIAPHRAGM ASSY	1	
39	13481-25G00-000	SPRING	1	
40	13247-25G00-000	SCREW	1	
41	09352-40703-600	HOSE	1	
42	13509B17C00N000	O RING	1	
43	13370B25G00N000	NEEDLE VALVE ASSY	1	

FIG. 12

2

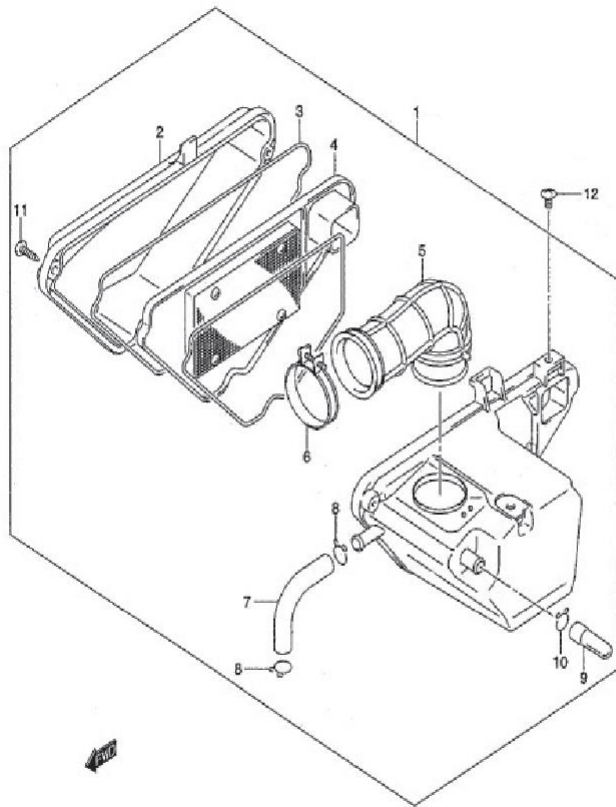


FIG. 12 AIR CLEANER

REF NO.	PART NO.	DESCRIPTION	QTY	REMARKS
1	13700-25G01-000	CLEANER ASSY, air	1	
2	13741B25G00N000	CAP, air cleaner	1	
3	13746B25G00N000	GASKET	1	
4	13780B25G00N000	FILTER ASSY	1	
5	13881-25G00-000	TUBE, outlet	1	
6	13826B25G00N000	CLAMP	1	
7	13853B25G00N000	TUBE, BREATHER	1	
8	09401-14301-000	CLIP	2	
9	13871-09G00-000	PLUG	1	
10	09401-11101-000	CLIP	1	
11	03541-0520B-000	SCREW	2	
12	02142B0612BN000	SCREW	3	

FIG. 13

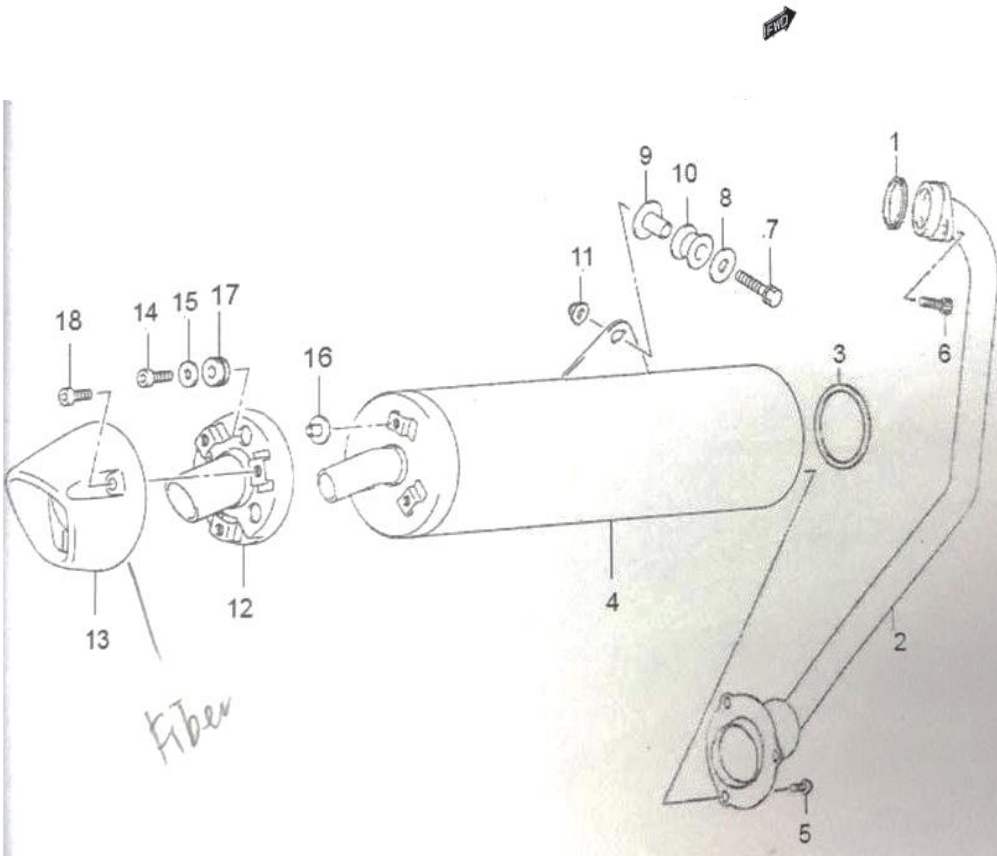


FIG. 13 MUFFLER

REF NO.	PART NO.	DESCRIPTION	QTY	REMARKS
1	14181B47E10N000	GASKET, exhaust pipe	1	
2	14150B25G00N000	PIPE, exhaust	1	
3	14181-25G00-000	GASKET	1	
4	14310B25G40N000	BODY, muffler	1	
5	01550B0620BN000	BOLT, joint	3	
6	07130-0825B-000	BOLT	2	
7	01570-0835A-000	BOLT	1	
8	09160-08032-000	WASHER	1	
9	09180-08225-000	SPACER	1	
10	09320-12032-000	CUSHION	1	
11	08319-3108A-000	NUT	1	
12	14760B25G40N000	STRAY COMP / MUFFLER RR COVER	1	
13	14790-25G40-019	COVER COMP MUFFLER RR	1	
14	07130B0616AN000	BOLT	3	
15	09160-06028-000	WASHER	3	
16	09169B06091N000	SPACER	3	
17	09320B08082N000	CUSHION	3	
18	09106B06069N000	BOLT, 6X15	3	

FIG. 14

2

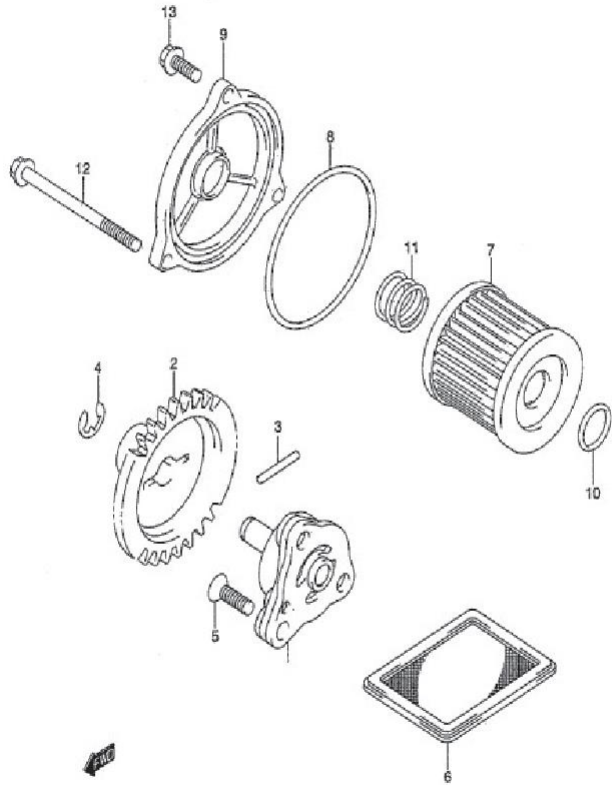


FIG. 14 OIL PUMP

REF NO.	PART NO.	DESCRIPTION	QTY	REMARKS
1	16400B47E30N000	PUMP ASSY, engine oil	1	
2	16331-47E00-000	GEAR, oil pump driven (NT:30)	1	
3	09261-02001-000	PIN	1	
4	08332-1106B-000	CIRCLIP	1	
5	02122-06253-000	SCREW	3	
6	16520-30A00-000	STRAINER, engine oil	1	
7	16510B45H10N000	FILTER, engine oil	1	
8	09280-54001-000	O RING	1	
9	16512-47E00-000	CAP, oil filter	1	
10	09280-13004-000	O RING	1	
11	09440-18002-000	SPRING	1	
12	01547B0670BN000	BOLT	2	
13	01547B0616AN000	BOLT, oil filter cap	1	

FIG. 15

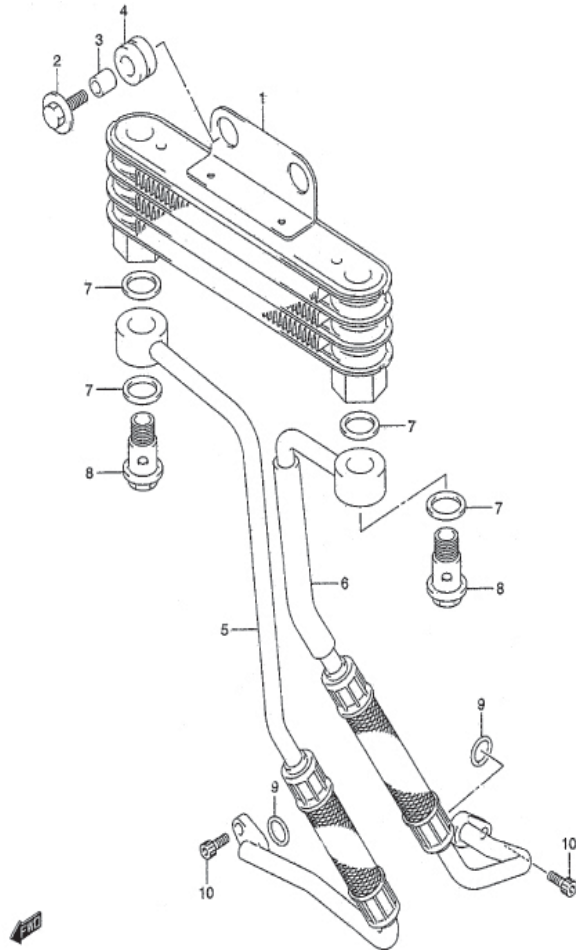


FIG. 15 OIL COOLER

REF NO.	PART NO.	DESCRIPTION	QTY	REMARKS
1	16600B25G10N000	COOLER ASSY, oil	1	
2	09116-06115-000	BOLT	2	
3	09180-06310-000	SPACER	2	
4	09320-10015-000	CUSHION	2	
5	16460-25G00-000	HOSE, oil cooler R	1	
6	16470-25G00-000	HOSE, oil cooler L	1	
7	09168-14015-000	GASKET, hose No.2	4	
8	09360-12006-000	BOLT, union	2	
9	09280-12008-000	O RING	2	
10	07130-0616B-000	BOLT	4	

FIG. 16

2

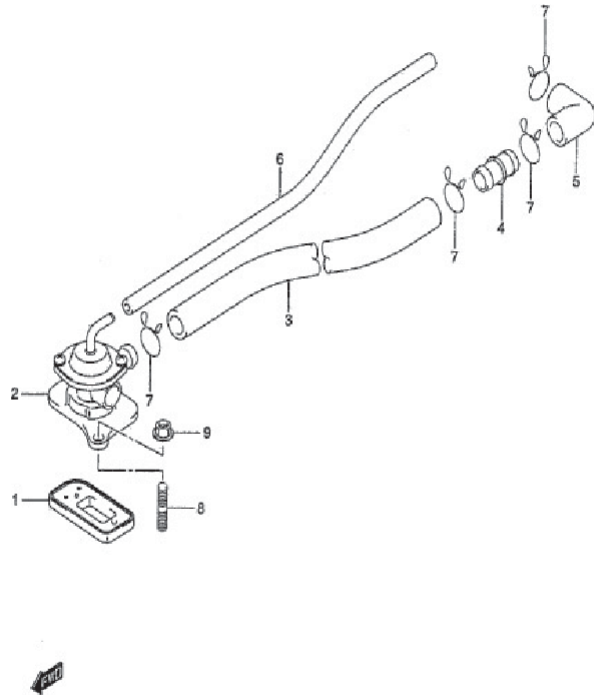


FIG. 16 2ND AIRVALVE

REF NO.	PART NO.	DESCRIPTION	3QTY	REMARKS
1	18450-06G20-000	VALVE ASSY, 2nd air reed	1	
2	18510-25G00-000	VALVE ASSY, air cut	1	
3	09352B11163N370	HOSE, 2nd air cleaner	1	
4	13888-19B00-000	JOINT, 2nd air cleaner hose	1	
5	18712B29F00N000	HOSE, 2nd air cleaner hose	1	
6	09359B40701N300	HOSE, 2nd air cleaner joint	1	
7	09401-15101-000	CLIP	4	
8	01421-0616B-000	BOLT, stud	2	
9	08316-1006B-000	NUT, 2nd air cap	2	

FIG. 17

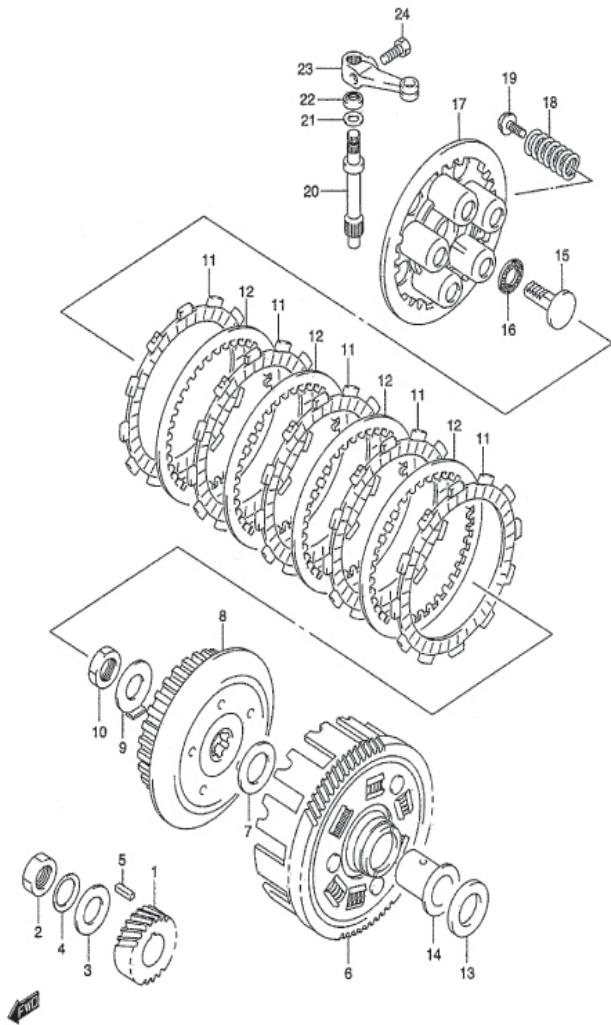
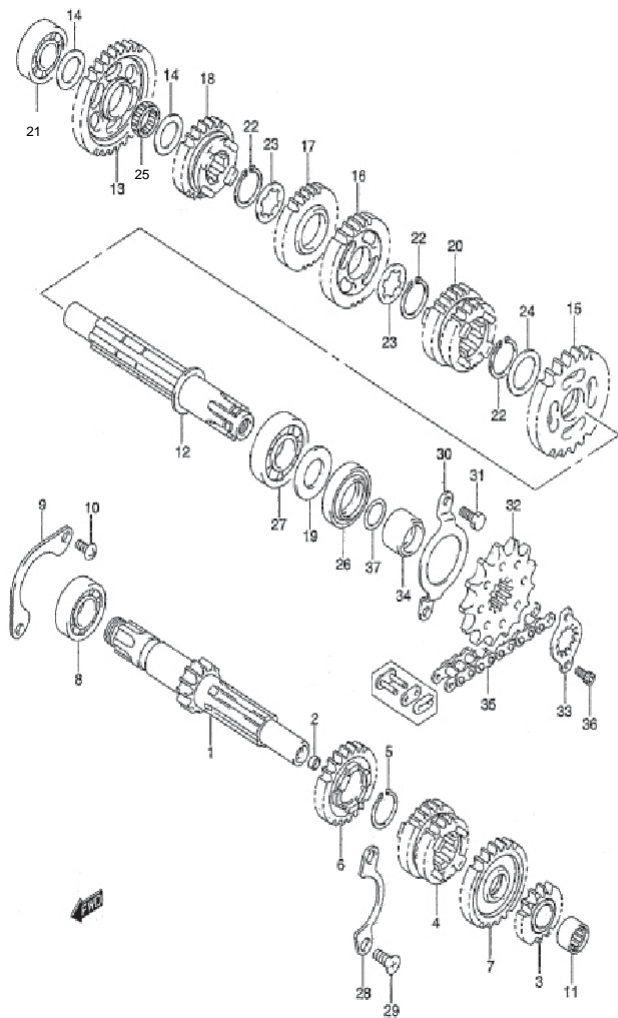


FIG. 17 CLUTCH

REF NO.	PART NO.	DESCRIPTION	QTY	REMARKS
1	21111-25G00T000	GEAR, primary drive	1	
2	09140-16019-000	NUT, primary drive	1	
3	09160-16003-000	WASHER, primary drive	1	
4	09164-16005-000	WASHER, primary drive	1	
5	09421-04004-000	KEY, primary drive gear	1	
6	21200-25G00T000	GEAR, primary driven	1	
7	08211-20352-000	WASHER, clutch sleeve	1	
8	21411-05200-000	HUB, clutch sleeve	1	
9	09169-16003-000	WASHER	1	
10	09140B16001N000	NUT	1	
11	21441-13A01-000	PLATE, drive	5	
12	21451-28030-000	PLATE, driven	4	
13	09160-20056-000	SPACER	1	
14	21251-13E10-000	SPACER, primary driven	1	
15	23165-48000-000	RACK, release	1	
16	09263-10002-000	BEARING	1	
17	21462-46901-000	DISC, pressure	1	
18	09440-15014-000	SPRING	5	
19	09116-05020-000	BOLT	5	
20	23261-13A01-000	PINION, release	1	
21	09160-12086-000	WASHER	1	
22	09285-10004-000	SEAL	1	
23	23271-47E00-000	ARM, release	1	
24	01500B0616BN000	BOLT	1	

FIG. 18



3

FIG. 18 TRANSMISSION

REF NO.	PART NO.	DESCRIPTION	QTY	REMARKS
1	24121-25G00-000	COUNTERSHAFT (NT:12)	1	
2	24125B25G00N000	PLUG	2	
3	24221-25G00-000	GEAR, 2nd drive (NT:14)	1	
4	24231-25G00-000	GEAR, 3rd/4th (NT:19/21)	1	
5	09380-20009-000	CIRCLIP, 5th	1	
6	24251-25G00-000	GEAR, 5th drive (NT:23)	1	
7	24261B25G20N000	GEAR, 6th drive (NT:25)	1	
8	09262-20019-000	BEARING COUNTER SHAFT, RH	1	
9	24741-12B00-000	RETAINER, COUNTER BEARING	1	
10	02112B0612BN000	SCREW	2	
11	08123B60020N000	BEARING COUNTER SHAFT, LH	1	
12	24130-25G00-000	SHAFT, DRIVE	1	
13	24311-25G00-000	GEAR, 1ST DRIVEN (NT: 33)	1	
14	08211-15251-000	WASHER, 1ST DRIVEN, LH/RH	2	
15	24321-25G00-000	GEAR, 2ND DRIVEN (NT:25)	1	
16	24331-25G00-000	GEAR, 3RD DRIVEN (NT:26)	1	
17	24341-25G00-000	GEAR, 4TH DRIVEN (NT:23)	1	
18	24351-25G00-000	GEAR, 5TH DRIVEN (NT:21)	1	
19	24359-05200-000	WASHER, OIL SEALING	1	
20	24361-25G00-000	GEAR, 6TH DRIVEN (NT:20)	1	
21	08113B62020N000	BEARING DRIVE SHAFT, RH	1	
22	09380-20009-000	CIRCLIP, 2ND/3RD/4TH DRIVEN	3	
23	09167-20011-000	WASHER, 3RD/4TH DRIVEN	2	
24	09181-20167-000	WASHER, 2ND DRIVEN	1	
25	09263-15023-000	BEARING, 1ST DRIVEN	1	
26	09283-27010-000	OIL SEAL	1	
27	09262-20019-000	BEARING DRIVE SHAFT, LH	1	
28	24741-05200-000	RETAINER, DRIVE SHAFT	1	
29	02122B0612BN000	SCREW	2	
30	24751-05210-000	RETAINER, DRIVE SHAFT	1	
31	01500-0610B-000	BOLT	2	
32	27511A25G00U000	SPROCKET, ENGINE (NT:14)	1	
33	27512B25G00N000	PLATE, ENGINE SPROCKET	1	
34	27531-25G00-000	SPACER, ENGINE SPROCKET	1	
35	27600B20960N120	CHAIN ASSY	1	
36	07130-0610B-000	BOLT, SPROCKET PLATE	1	
37	09280-19005-000	O RING	1	

FIG. 19

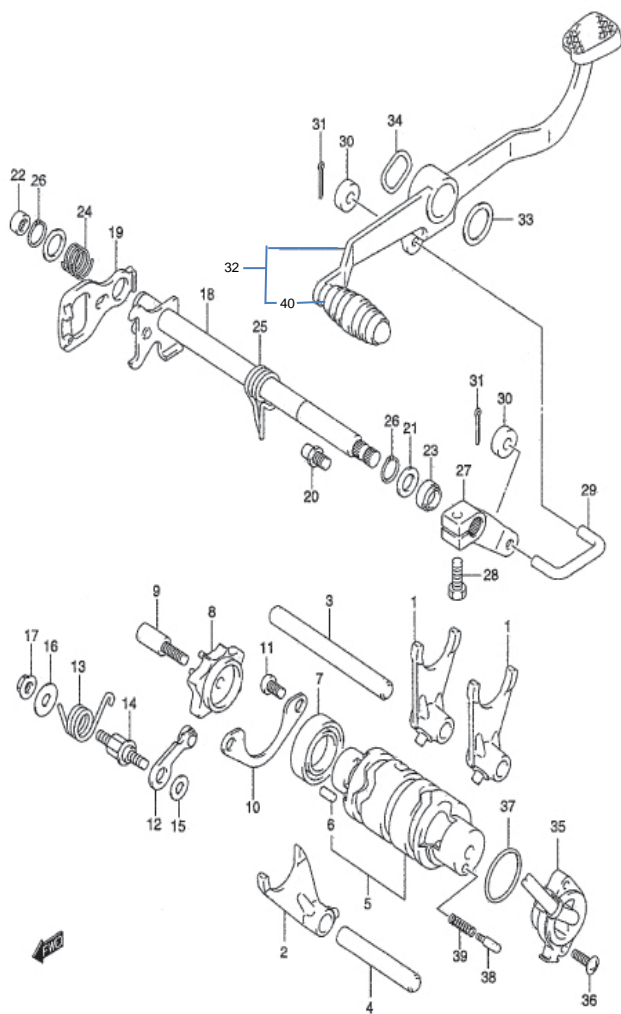


FIG. 19 GEAR SHIFTING

REF NO.	PART NO.	DESCRIPTION	QTY	REMARKS
1	25211-25G00-000	FORK, GEAR SHIFTING NO.1	2	
2	25231B25G10N000	FORK, GEAR SHIFTING NO.3	1	
3	25411-21D10-000	SHAFT, GEAR SHIFTING NO.1	1	
4	25421-35410-000	SHAFT, GEAR SHIFTING NO.2	1	
5	25310-47E20-000	CAM, GEAR SHIFTING	1	
6	04221-04089-000	EPIN	1	
7	08110A69050U000	BEARING, GEAR SHIFT CAM	1	
8	25381-25G00-000	PLATE, GEAR SHIFT CAM	1	
9	25312-12C00-000	STOPPER, SHIFT CAM	1	
10	24741-12B00-000	RETAINER	1	
11	02112B0612BN000	SCREW	2	
12	25350-26D01-000	STOPPER, CAM	1	
13	25355B26D10N000	SPRING, STOPPER	1	
14	25356-12C00-000	SUPPORT, CAM STOPPER	1	
15	08211-06141-000	WASHER, CAM STOPPER	1	
16	08211-06181-000	WASHER, CAM ARM	1	
17	08316-10063-000	NUT, CAM	1	
18	25510B47E21N000	SHAFT, GEAR SHIFTING	1	
19	25512-13E11-000	PLATE, GEAR SHIFT CAM	1	
20	25671-01011-000	STOPPER, GEAR SHIFT	1	
21	09181-14167-000	WASHER	2	
22	09263A14027U000	BEARING, LH	1	
23	09283-14L03-000	SEAL, SHAFT OIL	2	
24	09440-17013-000	SPRING, GEAR SHIFT PLATE	1	
25	09444-20007-000	SPRING, SHIFT SHAFT	1	
26	08331-31149-000	CIRCLIP, GEAR SHIFT	2	
27	25520B25G00N000	ARM, GEARSHIFT, LINK	1	
28	01500-0620B-000	BOLT	1	
29	25525-25G00-000	ROD, GEARSHIFT LINK	1	
30	09161B06024N000	WASHER, LINK ROD	2	
31	04111B20158N000	PIN, ROD COTTER	2	
32	25600B25G20N000	LEVER ASSY, GEAR SHIFTING	1	
33	09161-18005-000	WASHER	1	
34	09164-18002-000	WASHER	1	
35	37720-25G00-000	BASE ASSY, GEAR SHIFT TERM	1	
36	02112-7516A-000	SCREW	2	
37	09280-26007-000	O RING	1	
38	09209-05011-000	CONTACT, GEAR SHIFT SW	1	
39	09440-04010-000	SPRING, GEAR SHIFT SW	1	
40	25652B16H10N000	RUBBER, GEAR SHIFT PEDAL	1	

FIG. 20

3

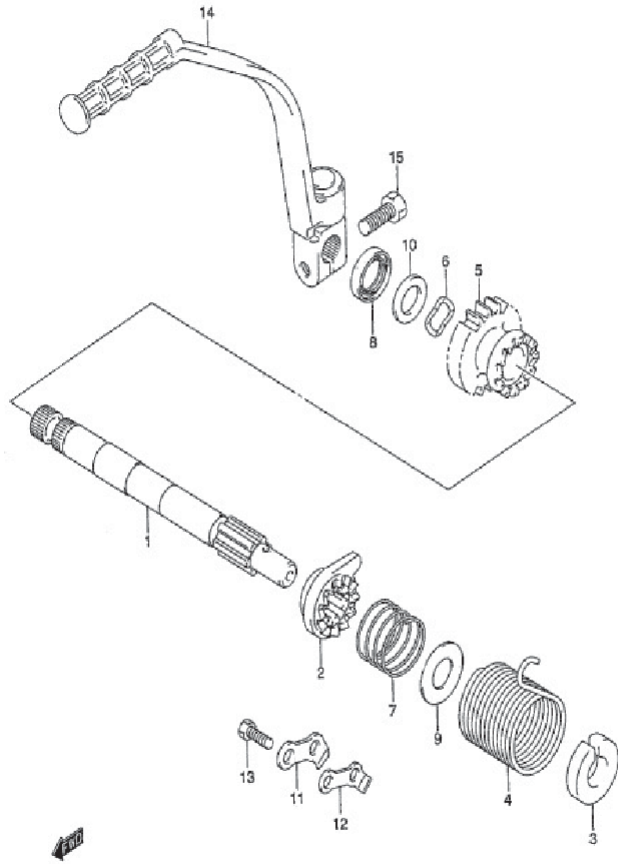


FIG. 20 KICK STATER

REF NO.	PART NO.	DESCRIPTION	QTY	REMARKS
1	26211-47E10-000	SHAFT, KICK STARTER	1	
2	26231-09410-000	STARTER, KICK	1	
3	26221M30A00-000	GUIDE, SPRING	1	
4	09448-38004-000	SPRING	1	
5	26241-47E20-000	GEAR, DRIVE (NT:18)	1	
6	26242-47E00-000	WASHER, KICK DRIVE GEAR	1	
7	09440-30007-000	SPRING	1	
8	09283-16006-000	OIL SEAL	1	
9	09160-16003-000	WASHER	1	
10	08211-14321-000	WASHER	1	
11	26232-09401-000	GUIDE, KICK STARTER	1	
12	26233-09400-000	STOPPER, KICK STARTER	1	
13	01500-0616B-000	BOLT	2	
14	26300B25G00N000	LEVER ASSY, KICK STARTER	1	
15	01500-0825B-000	BOLT	1	

FIG. 21

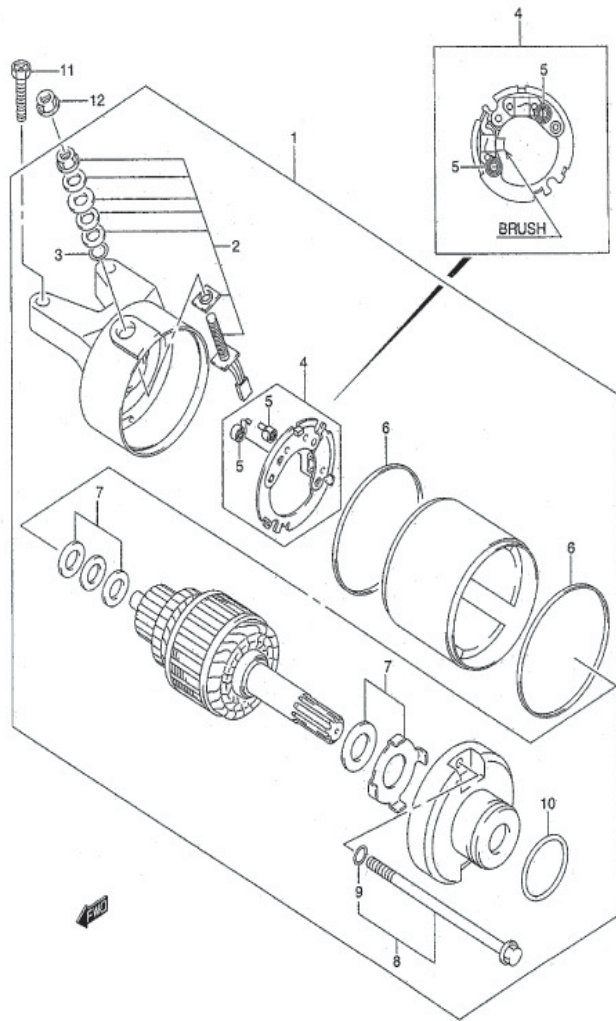


FIG. 21 STARTER MOTOR

REF NO.	PART NO.	DESCRIPTION	QTY	REMARKS
1	31100-47E10-000	MOTOR ASSY, STARTING	1	
2	31130-13E00-000	BRUSH TERMINAL SET	1	
3	31143-49040-000	O RING	1	
4	31132-33E00-000	BRUSH HOLDER SET	1	
5	31135-31300-000	SPRING, BRUSH	2	
6	31264-13E00-000	O RING	2	
7	31170-19B10-000	WASHER SET	1	
8	31280-15D10-000	BOLT SET	2	
9	31156-13E00-000	O RING	2	
10	09280-24003-000	O RING	1	
11	01547B06253N000	BOLT	2	
12	08361-35068-000	NUT	1	

FIG. 22

3

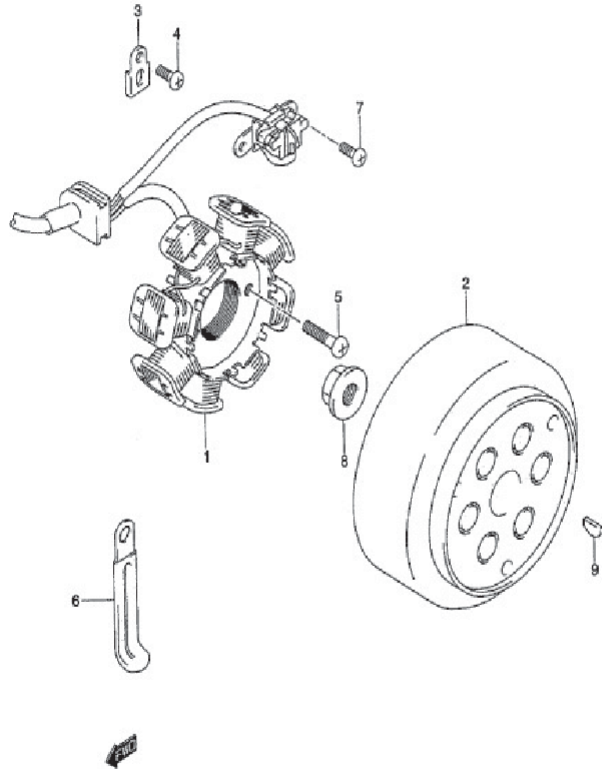


FIG. 22 MAGNETO

REF NO.	PART NO.	DESCRIPTION	QTY	REMARKS
	32101B25G20N000	STATOR ASSY TG037100-8020		
1	32101-25G00-000	STATOR ASSY	1	
2	32102B25G10N000	ROTOR ASSY	1	
3	31497-45000-000	CLAMP, SENSOR	1	
4	02142-0510B-000	SCREW	1	
5	02112-0620B-000	SCREW	2	
6	09404-06435-000	CLAMP (L:80)	1	
7	02142-0516B-000	SCREW	2	
8	08316-1012A-000	NUT	1	
9	08341-31039-000	KEY	1	

FIG. 23

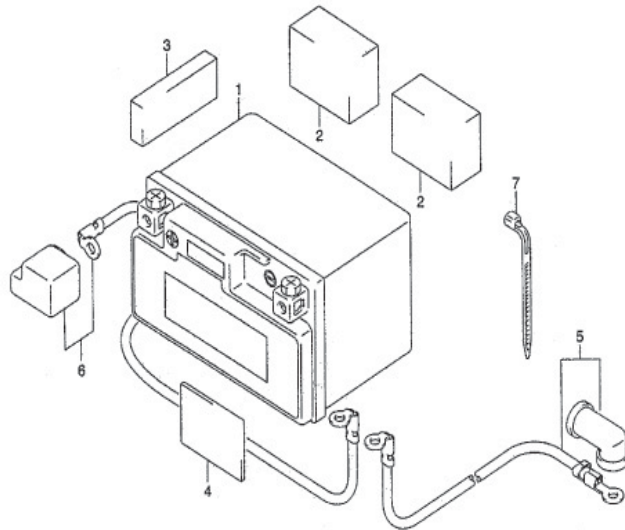
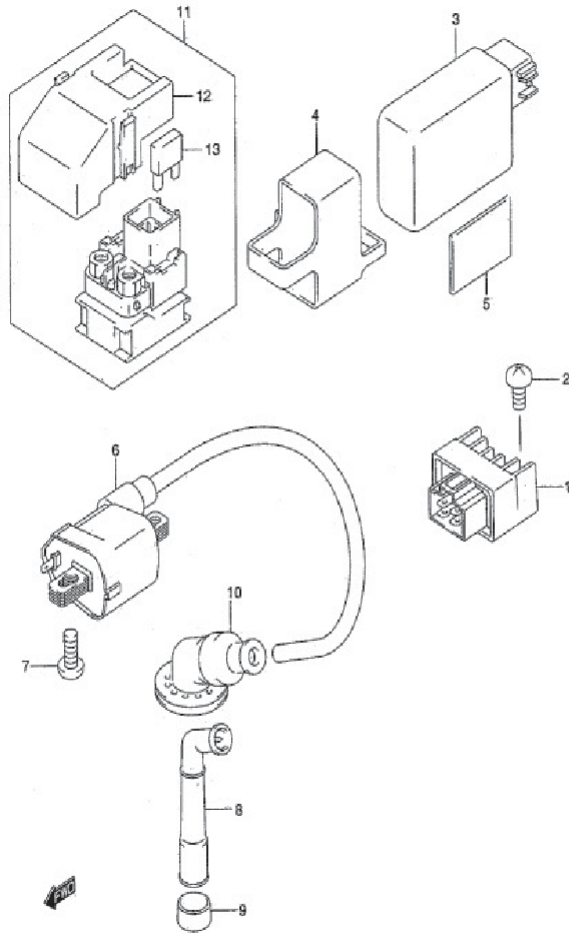


FIG. 23 BATTERY

REF NO.	PART NO.	DESCRIPTION	QTY	REMARKS
1	33610-25G01-000	BATTERY (FTZ7S,12V6AH)	1	
2	33652-30D00-000	PROTECTOR (40X30X2)	2	
3	33652-35400-000	PROTECTOR (20X50X8)	1	
4	33652-36100L000	PROTECTOR (30X40X2)	1	
5	33810-47E10T000	WIRE, STARTER MOTOR	1	
6	33820B25G00N000	WIRE, BATTERY PLUS	1	
7	09407-18402-000	CLAMP	1	

FIG. 24



4

FIG. 24 ELECTRICAL

REF NO.	PART NO.	DESCRIPTION	QTY	REMARKS
1	32800-45H01-000	RECTIFIER ASSY	1	
2	02112B0612BN000	SCREW	1	
3.1	32900B25G01N000	CDI UNIT (6 WIRE)	1	
3.2	32900B25G10N000	CDI UNIT (5 WIRE)	1	
4	32980-28F00-000	CUSHION	1	
5	33652-36100L000	PROTECTOR, CDI UNIT	1	
6	33410B25G00N000	COIL ASSY, IGNITION	1	
7	02112B0616BN000	SCREW	2	
8	33510B25G00N000	CAP, SPARK PLUG	1	
9	33541B25G00N000	SEAL, SPARK PLUG	1	
10	33542-25G00-000	SEAL, HIGH TENSION CORD	1	
11	31800B25G00N000	RELAY ASSY, STARTING MOTOR	1	
12	31861-47E00-000	COVER	1	
13	09481B10101N000	FUSE (10A)	1	

FIG.25

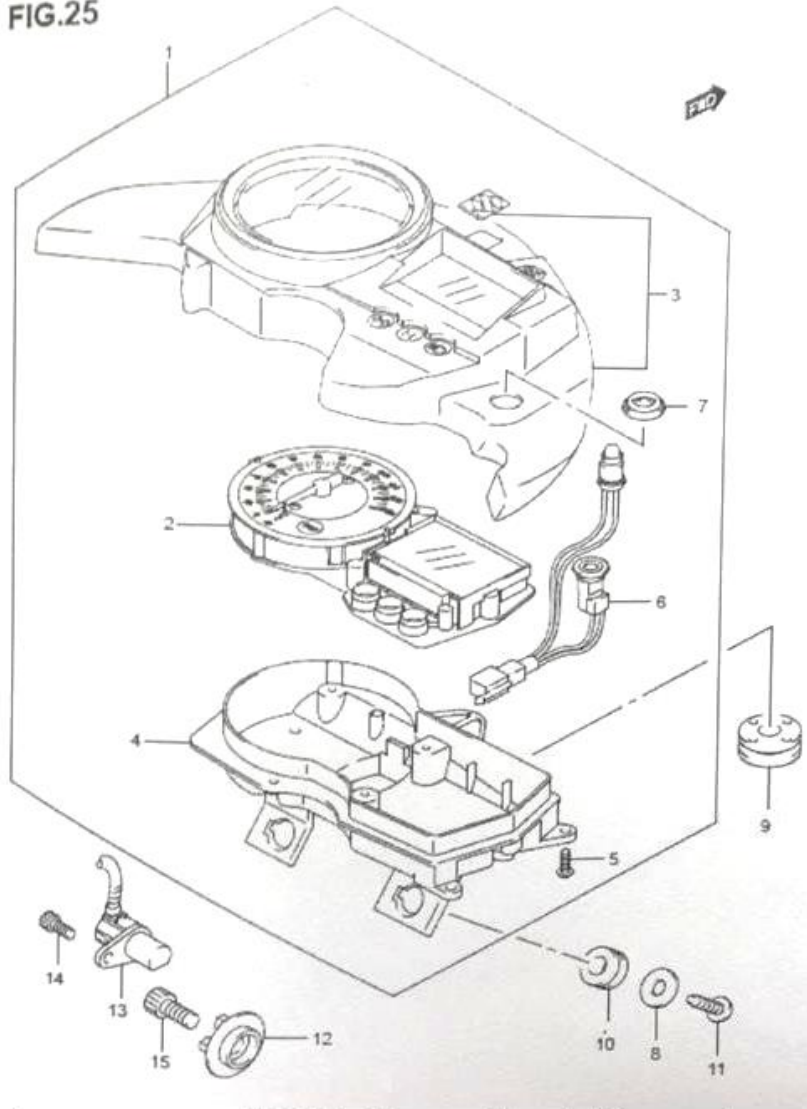


FIG. 25 SPEEDOMETER

REF NO.	PART NO.	DESCRIPTION	QTY	REMARKS
1	34100B25G20N000	SPEEDOMETER ASSY	1	
2	34110-25G01-000	TACHO & LCD METER	1	
3	34112B25G10N000	VISOR ASSY	1	
4	34111B25G10N000	LOWER CASE	1	
5	34149-03G00-000	SCREW	10	
6	09160-05045-000	WASHER, SPEEDOMETER	2	
7	09320-08028-000	CUSHION, UPPER	1	
8	09320-09016-000	CUSHION, LOWER	2	
9	03541-0516A-000	SCREW	2	
10	34981-25G00-000	ROTOR, SPEED	1	
11	34990B25G12N000	SENSOR, SPEED	1	
12	07120-0512B-000	BOLT, SPEED SENSOR	1	
13	07130-0816A-000	BOLT, SPEED ROTOR	1	

FIG. 26

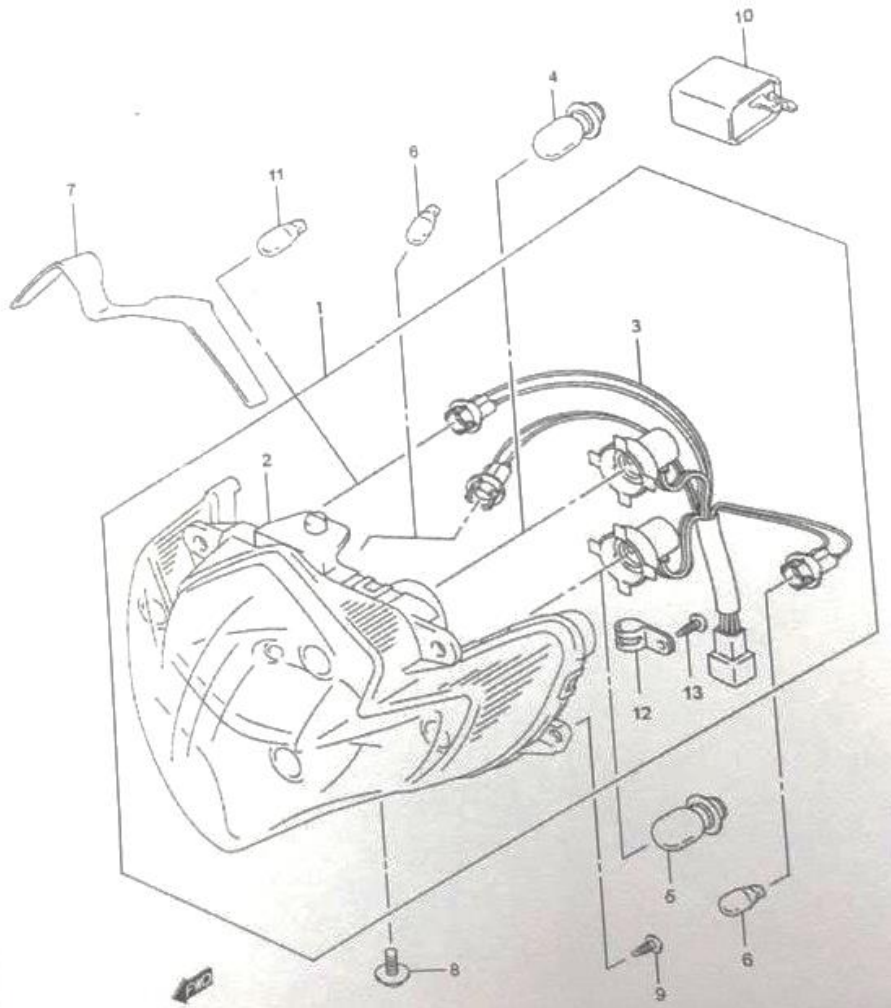


FIG. 26 HEADLAMP

REF NO.	PART NO.	DESCRIPTION	QTY	REMARKS
1	35100B25G12N000	HEADLAMP ASSY	1	
2	35121B25G10N000	.HEADLAMP UNIT	1	
3	35171B25G10N000	.CORD ASSY	1	
4	09471-12213-000	BULB (12V32/32W)	1	
5	09471-23FA0-000	BULB (12V18/18W)	1	
6	09471-12203-000	BULB (12V 10W)	2	
7	35137-25G00-000	CUSHION, HEADLAMP	1	
8	09136-05051-000	SCREW, HEADLAMP ADJUST	1	
9	03541-0516A-000	SCREW, HEADLAMP	4	
10	38610B09410N000	RELAY ASSY, TURNSIGNAL	1	
11	09471-12082-000	BULB	1	
12	35189B25G10N000	HOLDER CORD	1	
13	03511B0416BN000	SCREW	1	

FIG. 27

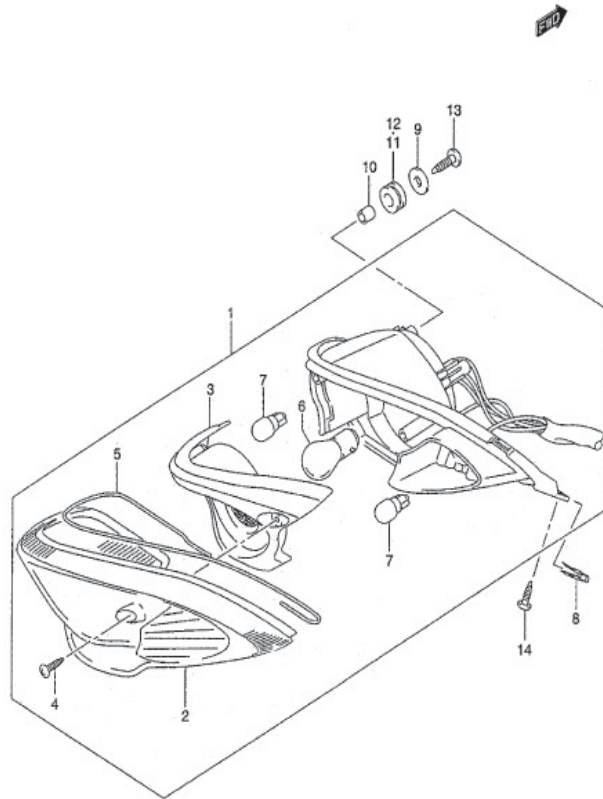
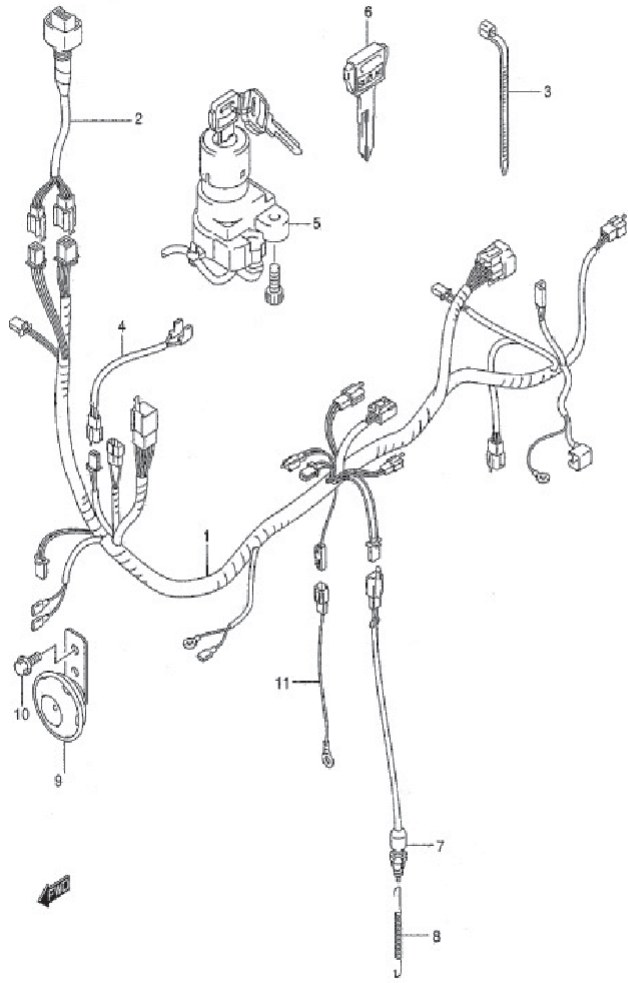


FIG. 27 REAR COMB, LAMP

REF NO.	PART NO.	DESCRIPTION	QTY	REMARKS
1	35710B25G00N000	LAMP ASSY, REAR COMB	1	
2	35712B25G00N000	.LENS	1	
3	35912B25G00N000	.LENS, INNER	1	
4	03211-04206-000	.SCREW	2	
5	35713B25G00N000	.GASKET	1	
6	09471-12213-000	BULB (12V 18/5W)	1	
7	09471-12203-000	BULB (12V 10W)	2	
8	09148-05038-000	NUT	3	
9	09160-05045-000	WASHER (5.5X18X1.0)	5	
10	48211-09G00-000	SPACER	3	
11	09320-09016-000	CUSHION REAR	4	
12	09320-09050-000	CUSHION REAR, LOWER	1	
13	03541-0512B-000	SCREW, REAR COMB	2	
14	03541-0520B-000	SCREW, REAR UNDER	3	

FIG. 28



4

FIG. 28 WIRING HARNESS

REF NO.	PART NO.	DESCRIPTION	QTY	REMARKS
1.1	36610B25G40N000	HARNESS, WIRING (5 WIRE)	1	
1.2	36610B25G20N000	HARNESS, WIRING (6 WIRE)		
2	36620B25G10N000	HARNESS, WIRING NO. 2	1	
3-1	09407-11401-000	CLAMP (L:95)	2	
3-2	09407-18402-000	CLAMP (L:165)	3	
3-3	09407-25401-000	CLAMP (L:235)	1	
4	36852B25G00N000	WIRE DISC BRAKE, LEAD	1	
5	37100-25G00-000	LOCK ASSY, STEERING SET	1	
6	37146-03A00-000	KEY, BLANK	1	OPT
7	37740B45D00N000	SWITCH ASSY STOP, LAMP	1	
8	09443B06075N000	SPRING	1	
9	38500B25G00N000	HORN ASSY	1	
10	01550B0610BN000	BOLT	1	
11	33860A30D10U000	WIRE, ENGINE EARTH	1	

FIG. 29

FIG. 29 FRAME

REF NO.	PART NO.	DESCRIPTION	QTY	REMARKS
1	41100B25G30NYSW	FRAME	1	
2	46211B25G10NX8E	HANDLE, PILLION RIDER	1	
3	01550B1025AN000	BOLT	2	

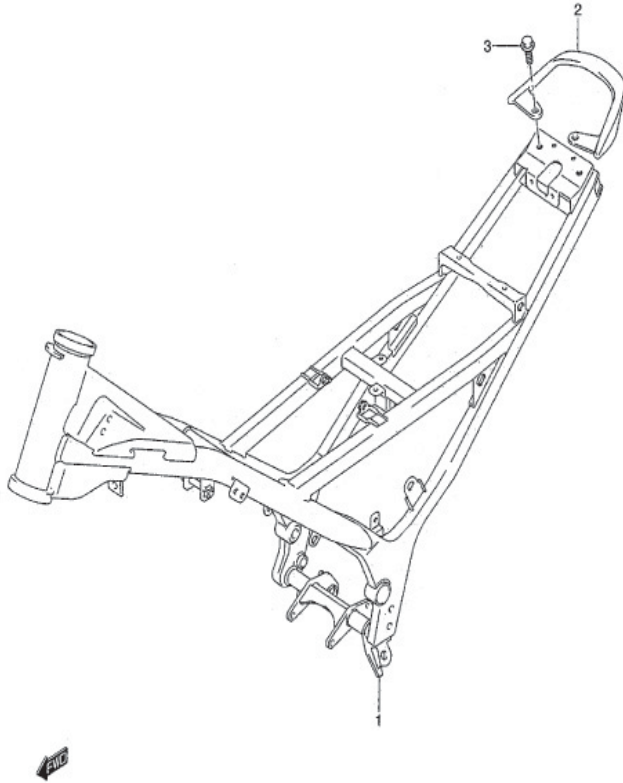
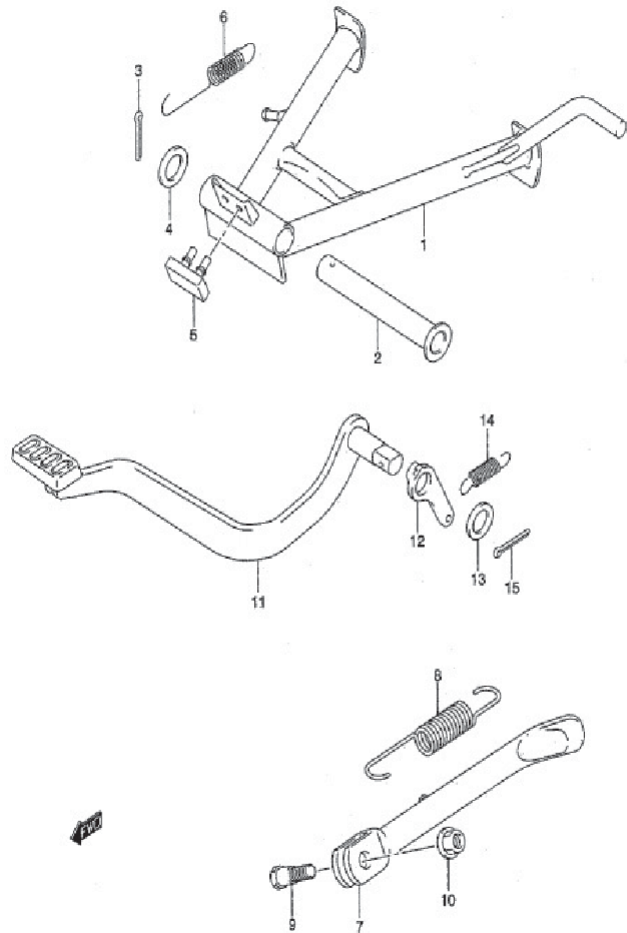


FIG. 30



4

FIG. 30 STAND

REF NO.	PART NO.	DESCRIPTION	QTY	REMARKS
1	42100B25G11N000	STAND, CENTER	1	
2	42211-09G00-000	SHAFT	1	
3	04111-30308-000	COTTER PIN	1	
4	08322-01163-000	WASHER	1	
5	42272-09G00-000	CUSHION, CENTER STAND	1	
6	42241M09G00-000	SPRING	1	
7	42310B47E01N000	STAND, PROP	1	
8	09443M14022-000	SPRING	1	
9	42341-25G00-000	BOLT	1	
10	08319-31107-000	NUT	1	
11	43110-25G00-000	PEDAL, BRAKE	1	
12	43128-25G00-000	PLATE, RETURN SPRING	1	
13	09160-15049-000	WASHER	1	
14	43211B25G00N000	SPRING	1	
15	04111-30308-000	COTTER PIN	1	

FIG. 31

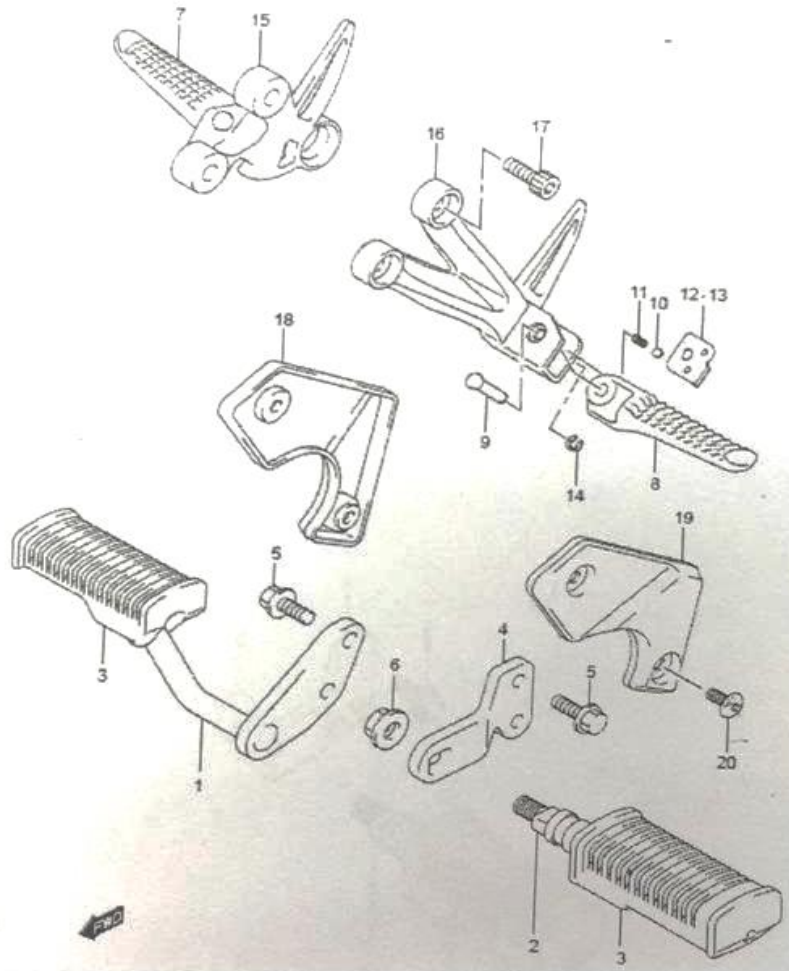
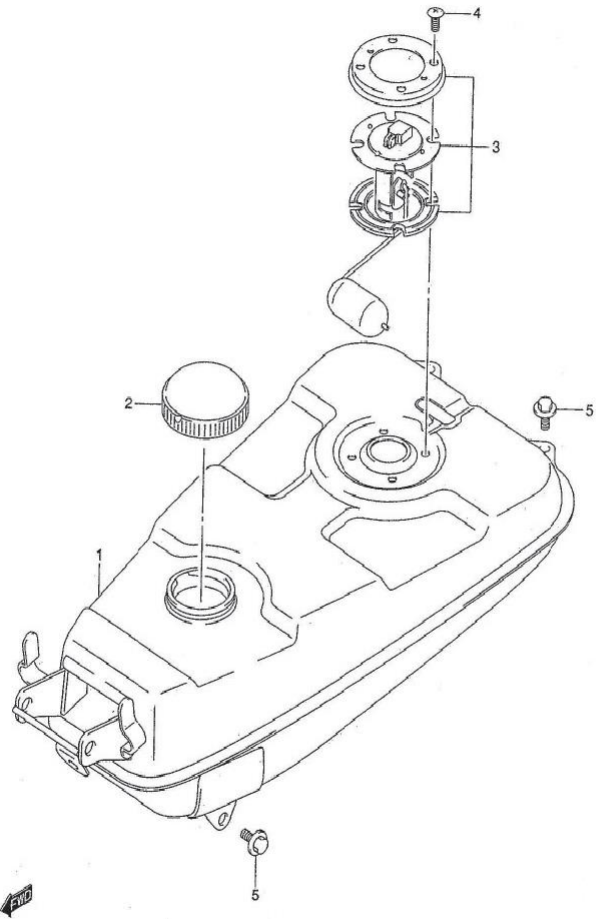


FIG. 31 FOOTREST

REF NO.	PART NO.	DESCRIPTION	QTY	REMARKS
1	43510B25G10N000	FOOTREST ASSY FRONT, RH	1	
2	43520B47D00N000	FOOTREST ASSY FRONT, LH	1	
3	43551-39110-000	RUBBER	2	
4	43540B25G00N000	BRACKET FRONT FOOTREST, LH	1	
5	01550B0820BN000	BOLT	4	
6	08319-3110A-000	NUT, BAR	1	
7	43611-25G00-000	BAR PILLION, RH	1	
8	43621-25G00-000	BAR PILLION, LH	1	
9	09208-06003-000	PIN	2	
10	06112-07004-000	BALL	2	
11	09440-05005T000	SPRING	2	
12	43816-33E21-000	PLATE, RH	1	
13	43826-33E22-000	PLATE, LH	1	
14	08332-11043-000	E RING	2	
15	43811B25G01N000	BRACKET PILLION, RH	1	
16	43821B25G01N000	BRACKET PILLION, LH	1	
17	43812-25G00-000	BOLT	4	
18	43596B25G00N000	GUARD, FR FOOTREST, L	1	
19	43586B25G00N000	GUARD, FR FOOTREST, R	1	
20	09139B06167N000	SCREW	4	

FIG. 32



4

FIG. 32 FUEL TANK

REF NO.	PART NO.	DESCRIPTION	QTY	REMARKS
1.1	44110B25G01N000	TANK, FUEL (2009)	1	
1.2	44110B25G10N000	TANK, FUEL (2011)	1	
2	44210-35014-000	CAP, FUEL TANK	1	
3.1	34810B25G00N000	GAUGE ASSY, FUEL LEVEL - (2009 Head - Big)	1	
3.2	34810B25G10N000	GAUGE ASSY, FUEL LEVEL - (2011 Head - Small)	1	
4	02112-0512A-000	SCREW	4	
5	01550-0612B-000	BOLT	4	

FIG. 33

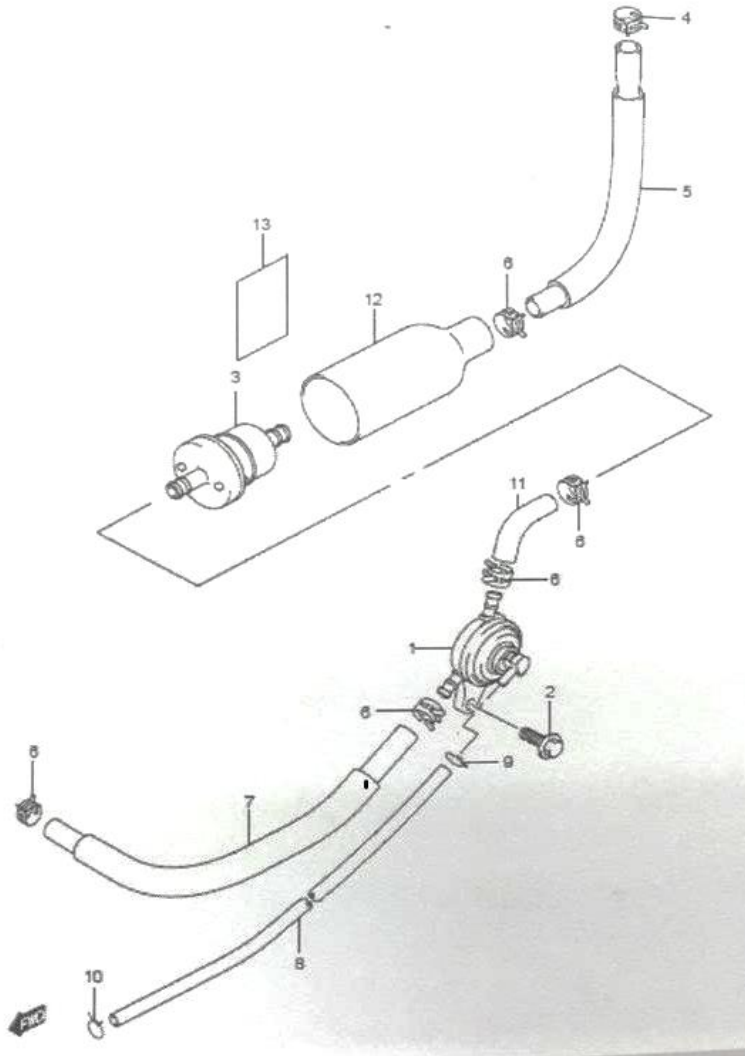


FIG. 33 FUEL COCK

REF NO.	PART NO.	DESCRIPTION	QTY	REMARKS
1	44300-09G00-000	COCK ASSY, FUEL	1	
2	01550B0610BN000	BOLT	1	
3	44330-13H00-000	FILTER, FUEL	1	
4	09401B10409N000	CLIP	1	
5	44421B25G10N000	HOSE FUEL, TANK & COCK	1	
6	09401-09403-000	CLIP	3	
7	44422B25G00N000	HOSE, COCK & CARB	1	
8	09359B40702N390	HOSE, VACUUM	1	
9	09401-06101-000	CLIP, FUEL HOSE	1	
10	09401-08402-000	CLIP	1	
11	44424-25G00-000	HOST, COCK & CARB	1	
12	44463-25G00-000	BOOT	1	
13	48114-16H00-000	CUSHION FUEL HOSE	1	



FIG. 34

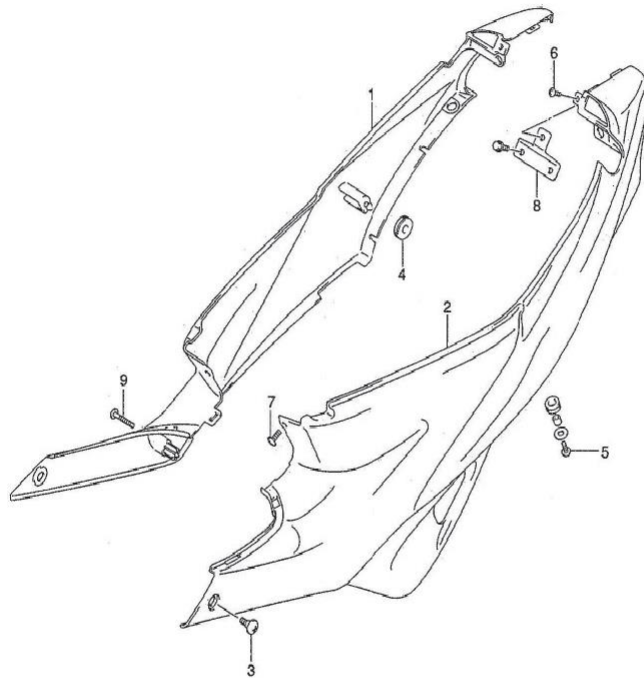


FIG. 34 COVER FRAME

REF NO.	PART NO.	DESCRIPTION	QTY	REMARKS
1	47111B25G00N106	COVER, FRAME RH	1	
2	47211B25G00N106	COVER, FRAME LH	1	
3	53274-09G10-000	SCREW FRONT	2	
4	09320-08018-000	CUSHION	3	
5	02142B0616BN000	SCREW	3	
6	02142-0516B-000	SCREW, REAR	1	
7	03541-0516A-000	SCREW	4	
8	47140-25G00-000	BRACKET, REAR	1	
9	09125-06091-000	SCREW, RH	1	

4

FIG. 35

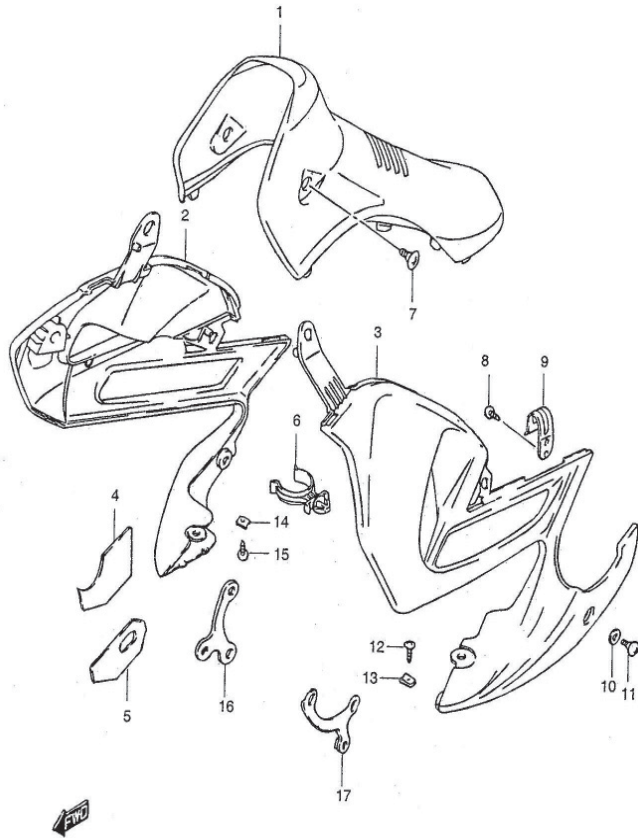


FIG. 35 SHIELDLEG REAR

REF NO.	PART NO.	DESCRIPTION	QTY	REMARKS
1	48131B25G00N	SHIELDLEG CENTER	1	FOR COLOR CODE, REFER TO FRONT PAGE OF CATALOGUE
2	94471B25G10N	COWLING SET, RH	1	FOR COLOR CODE, REFER TO FRONT PAGE OF CATALOGUE
3	94481B25G10N	COWLING SET, LH	1	FOR COLOR CODE, REFER TO FRONT OF CATALOGUE
4	94517B25G10N000	SHIELD, UNDER COWL NO.1	1	
5	94518B25G10N000	SHIELD, UNDER COWL NO.2	1	
6	48211B25G01N000	CLIP, SHIELDLEG	4	
7	53274-09G00-000	SCREW CENTER	2	
8	03541-0510B-000	SCREW COWLING	2	
9	94541-25G00-000	BRACKET SIDE COWL UPPER	2	
10	09169-06011-000	WASHER SIDE COWL NO.1	2	
11	09139B06145N000	SCREW SIDE COWL NO.1	1	
12	09136B05052N000	SCREW SIDE COWL UPPER	1	
13	09148-05045-000	NUT SIDE COWL UPPER	1	
14	09148-05038-000	NUT SIDE COWL	1	
15	03541B1516BN000	SCREW, SIDE COWL	1	
16	94510-25G10-000	BRACKET SIDE COWL, RH	1	
17	94520-25G10-000	BRACKET SIDE COWL, LH	1	

FIG. 36

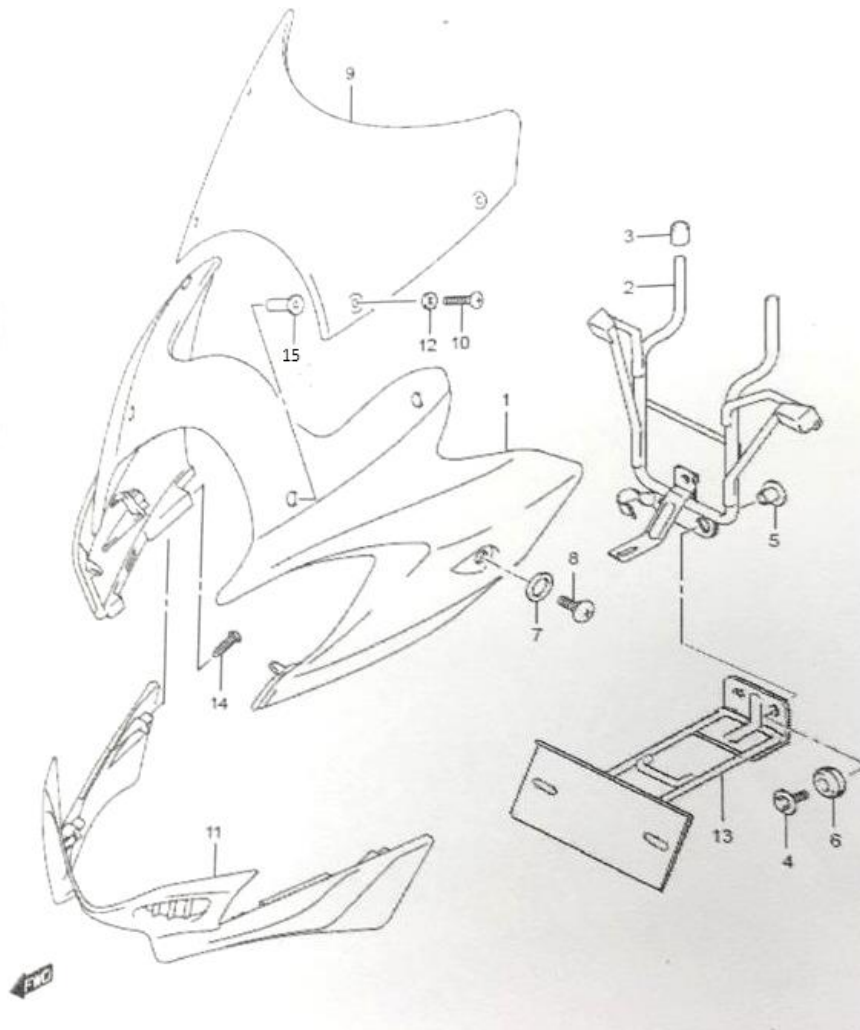


FIG. 36 HEADLAMP HOUSING

REF NO.	PART NO.	DESCRIPTION	QTY	REMARKS
1	51811B25G10N	HOUSING, HEADLAMP	1	FOR COLOR CODE, REFER TO FRONT PAGE OF CATALOGUE
2	51850B25G20N000	BRACE, HOUSING	1	
3	51831-25G00-000	CUSHION	2	
4	09116-06111-000	BOLT LOWER	2	
5	51832-25G00-000	SPACER	2	
6	09320M09026-000	CUSHION	2	
7	09169-06011-000	WASHER	2	
8	09139B06145N000	SCREW	2	
9	94611B25G00N000	WINDSCREEN	1	
10	94619B28G00N000	SCREW WINDSCREEN	4	
11	51833B25G00N	COVER, HEADLAMP LOWER	1	
12	94494N28G00N000	WASHER WINDSCREEN	1	
13	48190B25G01N000	PLATE COMP FR LISENCE	1	
14	03541B0412AN000	SCREW	6	
15	09159-05019-000	NUT		

FIG. 37

FIG. 37 FENDER FRONT

REF NO.	PART NO.	DESCRIPTION	QTY	REMARKS
1	53111B25G00N	FENDER, FRONT	1	FOR COLOR CODE, REFER TO FRONT PAGE OF CATALOGUE
2	01547B0612AN000	BOLT	2	
3	09139B06145N000	SCREW	2	
4	09169-06053-000	WASHER	4	

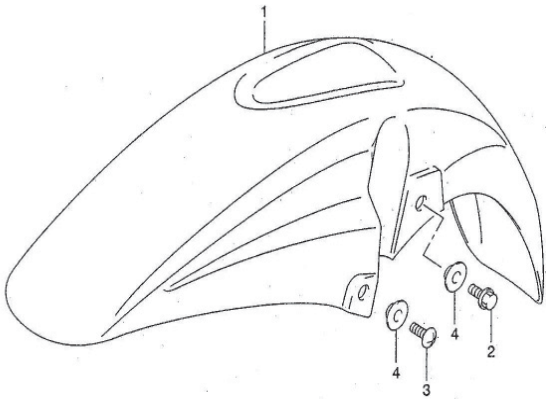


FIG. 38

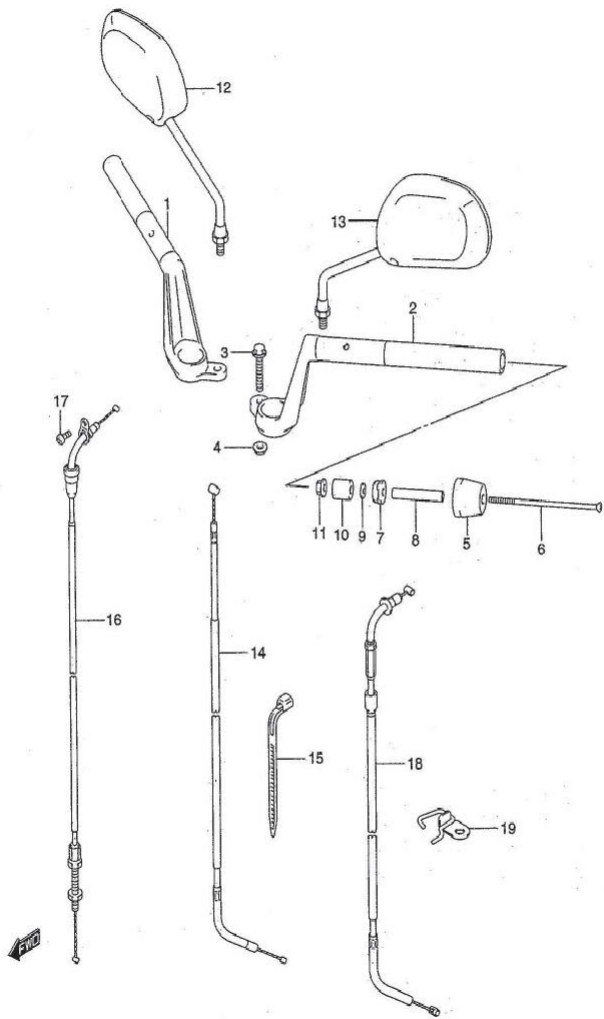


FIG. 38 HANDLEBAR

REF NO.	PART NO.	DESCRIPTION	QTY	REMARKS
1	56110B25G20N000	HANDLEBAR, RH (SILVER)	1	
2	56150B25G10N13L	HANDLEBAR, LH (SILVER)	1	
3	09103-08353-000	BOLT, HANDLEBAR	2	
4	08319-3108A-000	NUT, HANDLEBAR HOLDER	2	
5	56278-47E00-000	BALANCER, HANDLEBAR	2	
6	09127-06018-000	SCREW	2	
7	56272-23F00-000	EXPANDER, OUTER	2	
8	56276-16H00-000	SPACER	2	
9	09160-06126-000	WASHER	2	
10	56272-28F00-000	EXPANDER, INNER	2	
11	09159-06024-000	NUT	2	
12.1	56500B28F20N000	MIRROR ASSY, REAR VIEW RH	1	
12.2	56500B28F30N000	MIRROR ASSY, REAR VIEW RH (BLACK)	1	
13.1	56600B28F20N000	MORROR ASSY, REAR VIEW LH	1	
13.2	56600B28F30N000	MORROR ASSY, REAR VIEW LH (BLACK)	1	
14	58410A25G01U000	CABLE, STARTER	1	
15	09407-18402-000	CLAMP	1	
16.1	58300A25G00U000	CABLE ASSY, THROTTLE	1	
16.2	58300B25G30N000	CABLE ASSY, THROTTLE	1	
17	02112B0512BN000	SCREW	1	
18	58200A25G00U000	CABLE ASSY, CLUTCH	1	
19	58620B25G01U000	GUIDE, CABLE	1	

4

FIG. 39

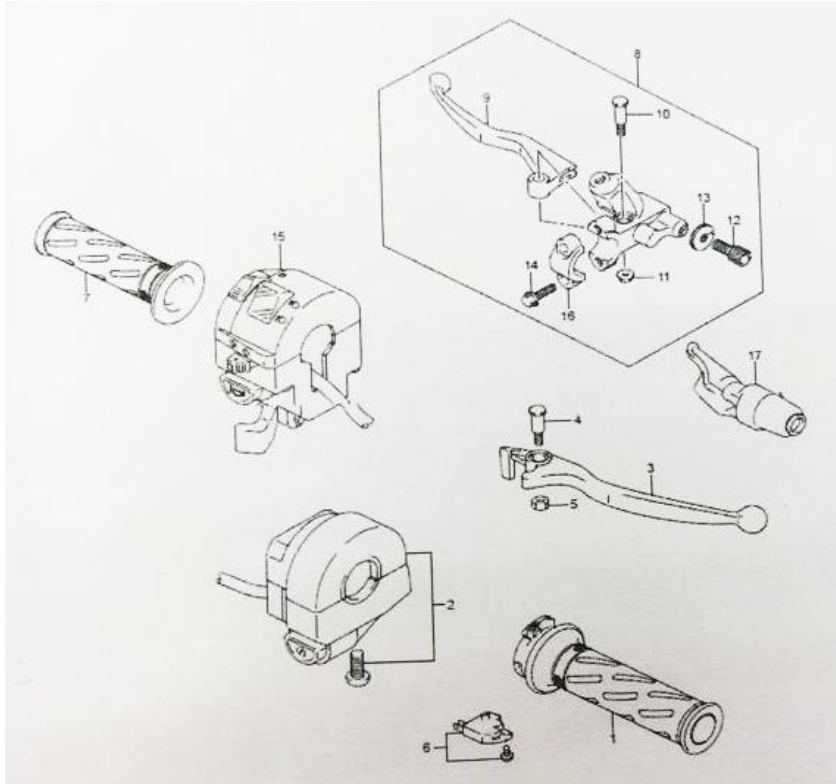


FIG. 39 HANDLE LEVER

REF NO.	PART NO.	DESCRIPTION	QTY	REMARKS
1	57110-23F10L000	GRIP, THROTTLE	1	
2	37200-25G00-000	SWITCH ASSY HANDLE RH	1	
3	57421-21D10L100	LEVER, BRAKE	1	
4	09111-06076-000	.BOLT	1	
5	08319B21063N000	.NUT	1	
6	57460B41H00N000	SWITCH ASSY, STOP	1	
7	57211B22D01N000	GRIP, LH	1	
8	57500-25G30-000	LEVER ASSY, CLUTCH	1	
9	57620-23F00-000	LEVER, CLUTCH	1	
10	57431-23F00-000	BOLT	1	
11	57513-23F00-000	NUT	1	
12	57441-11010-000	ADJUSTER	1	
13	57442-11010-000	NUT	1	
14	57512-21D10-000	BOLT, HOLDER	2	
15	37400-25G20-000	SWITCH ASSY, HANDLE LH	1	
16	59671-36500-000	HOLDER, MASTER CYLINDER	1	
17	57661-25G00-000	COVER CLUTCH LEVER	1	

FIG. 40

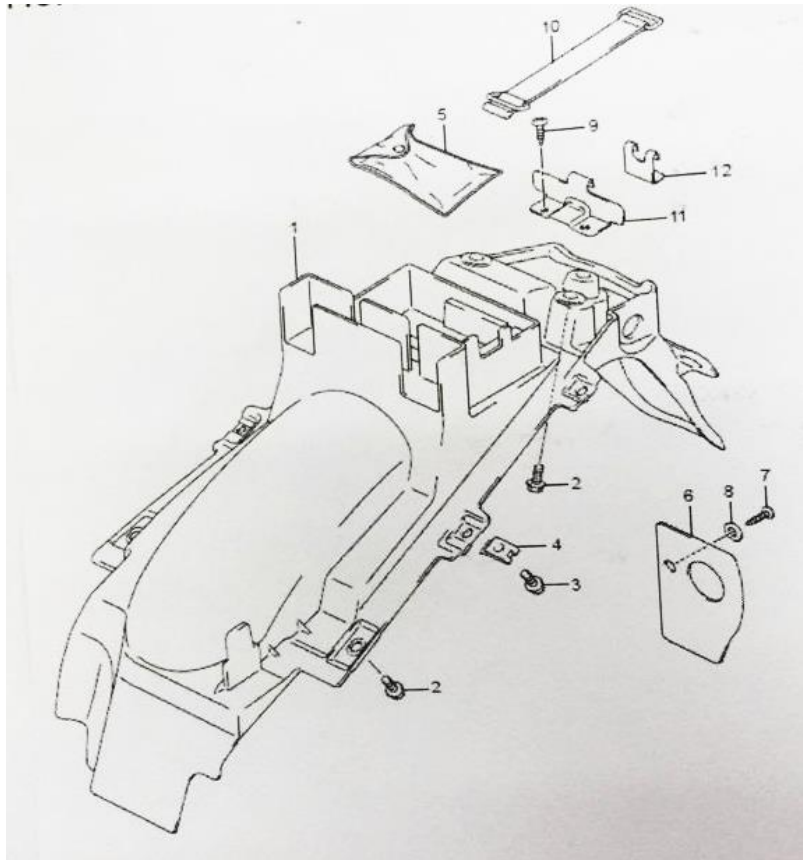


FIG. 40 FENDER REAR

REF NO.	PART NO.	DESCRIPTION	QTY	REMARKS
1	63111B25G03N000	FENDER, REAR	1	
2	61361-09G00-000	BOLT	2	
3	02142B0616BN000	SCREW	2	
4	09148-05038-000	NUT	4	
5	96510B10J20N000	TOOL SET	1	
6	63191-25G00-000	GUARD, REAR FENDER	1	
7	03541-05123-000	SCREW	1	
8	09160-05045-000	WASHER	1	
9	03541-0512A-000	SCREW	3	
10	47435B25G10N000	BAND, TOOL	1	
11	47425B25G00N000	BRACKET, BAND TOOL NO.1	1	
12	47426B25G00N000	BRACKET, BAND TOOL NO.2	1	

4

FIG. 41

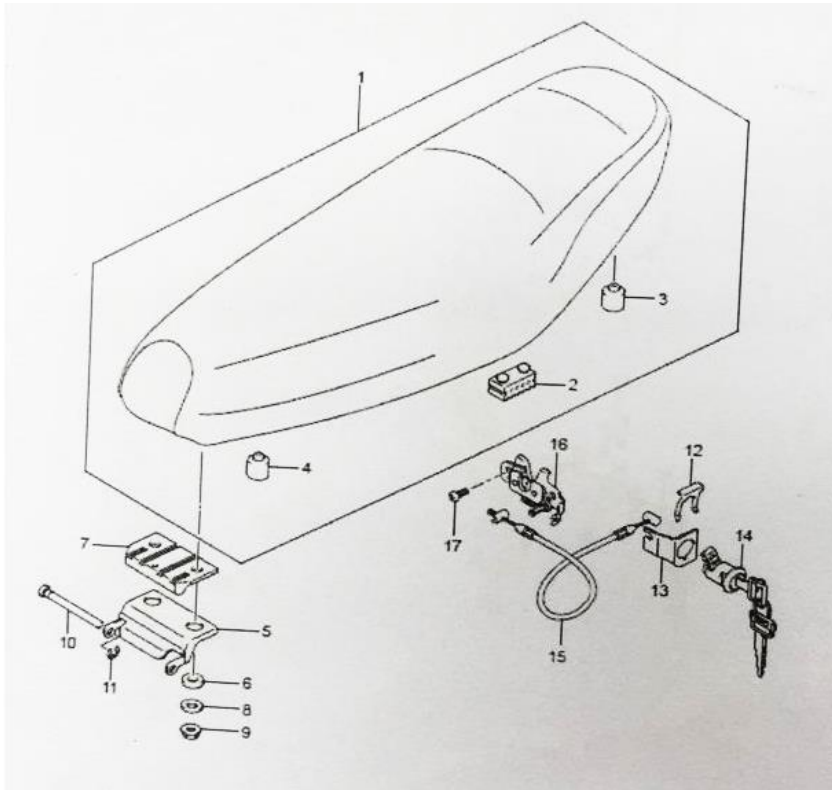
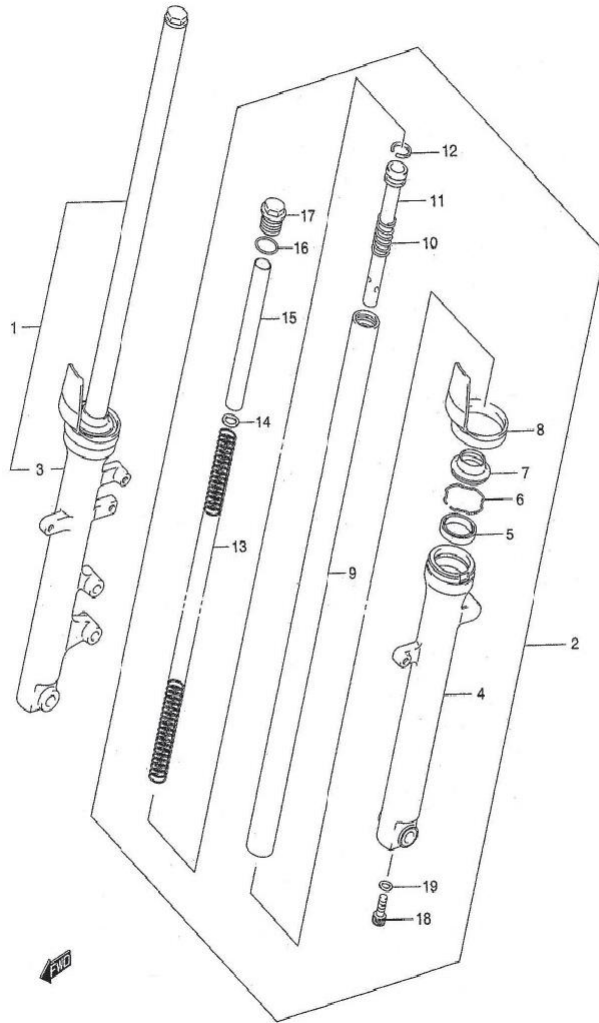


FIG. 41 SEAT

REF NO.	PART NO.	DESCRIPTION	QTY	REMARKS
1	45100B25G01NHES	SEAT ASSY	1	
2	45149-09G00-000	E CUSHION	4	
3	45149-25G00-000	E CUSHION	2	
4	45149-35410-000	E CUSHION	1	
5	45285-25G00-000	BRACKET SEAT HINGE, UPPER	1	
6	45148-09G00-000	CUSHION SEAT HINGE, LOWER	1	
7	45287C23F10C000	CUSHION SEAT HINGE, UPPER	1	
8	09160-06077-000	WASHER SEAT HINGE, BRACKET	2	
9	08310-0006A-000	NUT, SEAT HINGE UPPER	2	
10	45215-09G10-000	PIN, SEAT HINGE	1	
11	08332-1106B-000	E RING	1	
12	45289-11F00-000	PLATE, SEATLOCK ASSY	1	
13	45288-20G00-000	GUIDE, SEATLOCK CABLE	1	
14	95700B14F60N000	LOCK SET, SEAT	1	
15	45280B25G10N000	CABLE, SEATLOCK	1	
16	45700-09G10-000	BRACKET, STRIKER SUPPORT	1	
17	02112-0610B-000	SCREW	2	

FIG. 42



4

FIG. 42 FRONT DAMPER

REF NO.	PART NO.	DESCRIPTION	QTY	REMARKS
1	51103B25G50NYSW	DAMPER ASSY, FRONK FORK RH	1	
2	51104B25G50NYSW	DAMPER ASSY, FRONT FORK LH	1	
3	51130B25G50NYSW	.TUBE, OUTER RH	1	
4	51140B25G50NYSW	.TUBE OUTER LH	1	
5	51153-23F00L000	.SEAL, OIL	2	
6	51156B43010N000	.RING, OIL SEAL	2	
7	51173-23F00L000	.SEAL, DUST	2	
8	51201-25G00-000	.PROTECTOR	2	
9	51110-25G00-000	.TUBE INNER	2	
10	51177-35400L000	.SPRING REBOUND	2	
11	51146-31CB0L000	.CYLINDER	2	
12	51196B39140N000	.RING, PISTON	2	
13	51176-25G00-000	.SPRING, FRONT	2	
14	51172-27510-000	.WASHER	2	
15	51176-23330-000	.SPACER	2	
16	09280B17002N000	.O RING	2	
17	51351-25G00-000	.CAP	2	
18	51147-16510L000	.BOLT	2	
19	51148-41310-000	.GASKET	2	

FIG. 43

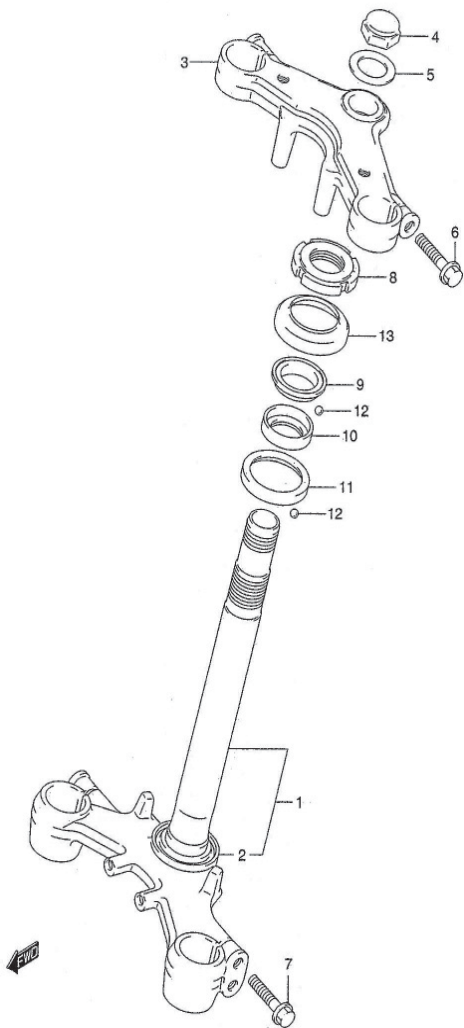


FIG. 43 STEM STEERING

REF NO.	PART NO.	DESCRIPTION	QTY	REMARKS
1	51410B25G00N000	STEM, STEERING	1	
2	51622-25G00-000	.RACE	1	
3	51311B25G00N000	HEAD, STEERING STEM	1	
4	51353-26F00-000	NUT	1	
5	51356-10D03-000	WASHER	1	
6	01550-08353-000	BOLT, HEAD	2	
7	01550-08353-000	BOLT, HEAD	4	
8	51631-28000-000	NUT, STEERING STEM	1	
9	51621-28000-000	RACE, OUTER UPPER	1	
10	51611B09G00N000	RACE, INNER UPPER	1	
11	51612-35400-000	RACE, INNER LOWER	1	
12	06111-06004L000	BALL, STEERING STEEL	49	
13	51643-25001-000	DUST SEAL, UPPER	1	

FIG. 44

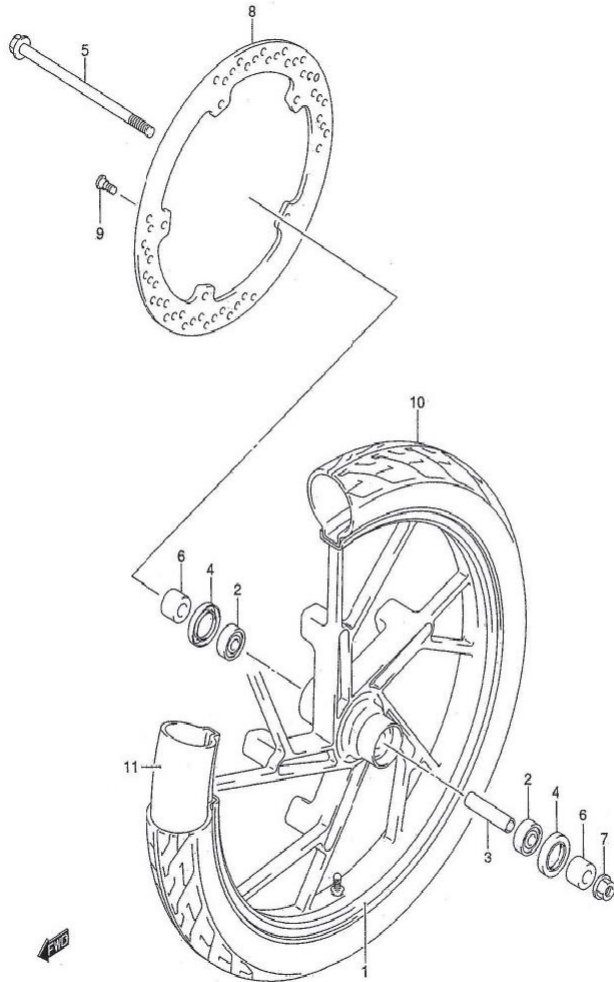


FIG. 44 FRONTWHEEL

REF NO.	PART NO.	DESCRIPTION	QTY	REMARKS
1	54111B25G40NYSW	WHEEL, FRONT (17X1.40)	1	
2	08113B63017N000	BEARING	2	
3	09180-12145-000	SPACER, FRONT HUB	1	
4	09285-25003-000	SEAL, FR WHEEL BEARING	2	
5	64711-09G00-000	AXLE, FRONT	1	
6	54751B25G01N000	SPACER, FRONT AXLE RH	2	
7	08319-3112A-000	NUT	1	
8	59211B25G40N000	DISC, FRONT BRAKE	1	
9	59218-09G00-000	BOLT	5	
10	55110B20G80N000	TIRE, FRONT (70/90-17 38P)	1	
11	55200B20G81N000	TUBE ASSY, WHEEL INNER	1	

4

FIG. 45

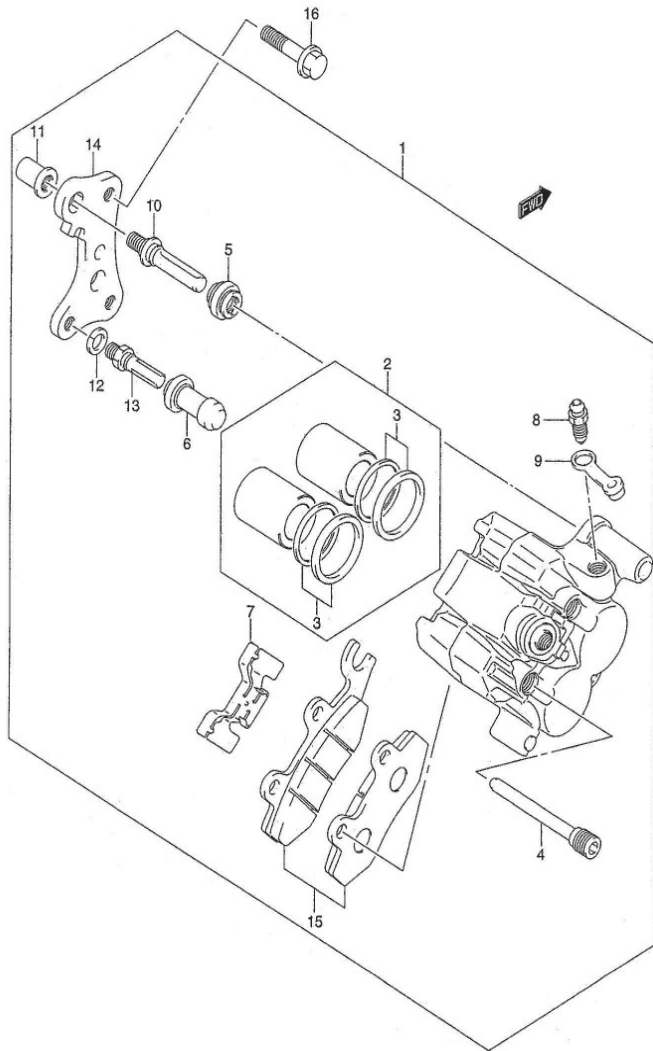
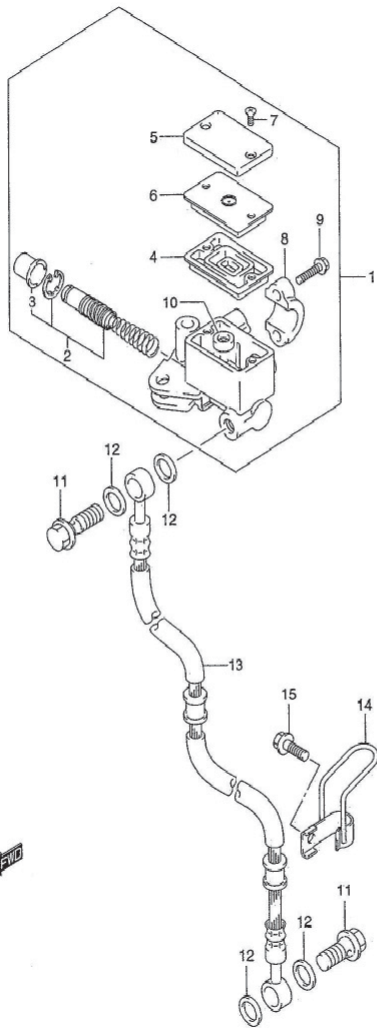


FIG. 45 FRONT CALIPER

REF NO.	PART NO.	DESCRIPTION	QTY	REMARKS
1	59100B25G01NZ00	CALIPERS ASSY, FRONT RH	1	
2	69100-31810L000	.PISTON SET	1	
3	59300-13820L000	..SEAL SET, PISTON	1	
4	59345-14600L000	.PIN	2	
5	59303-14500L000	.BOOT	1	
6	59386-13A00L000	.BOOT	1	
7	69115-31D10L000	.SPRING	1	
8	59121-01A00L000	.BLEEDER	1	
9	59122-01A00L000	.CAP, BLEEDER	1	
10	59387-00B20L000	.PIN	1	
11	59388-00B20L000	.NUT	1	
12	59314-13A00L000	.WASHER	1	
13	59382-13A00L000	.BOLT	1	
14	59351B21D00N000	.BRACKET	1	
15	59100B25810N000	.PAD SET	1	
16	09103-08107-000	BOLT (8X33)	2	

FIG. 46



4

FIG. 46 FRONT MASTER CYLINDER

REF NO.	PART NO.	DESCRIPTION	QTY	REMARKS
1	59600B21D30N000	CYLINDER ASSY, FRONT MASTER	1	
2	59600B21810N000	.PISTON/CUP SET	1	
3	59666B44300N000	..BOOT	1	
4	59667B44B00N000	..DIAPHRAGM	1	
5	59669B21D20N000	..CAP	1	
6	59668B21D20N000	..PLATE	1	
7	69689-49300L000	..SCREW	2	
8	59671-36500-000	..HOLDER	1	
9	59675B02FA0N000	..BOLT	2	
10	59664B32F00N000	..SEPARATOR	1	
11	09360-10062-000	BOLT, BRAKE FLUID	2	
12	09168-10033-000	WASHER, BRAKE FLUID	4	
13	59480B25G00N000	HOSE, FRONT BRAKE	1	
14	59260B25G00N000	CLAMP, HOSE LOWER	1	
15	01550B0610BN000	BOLT, LOWER HOSE	1	

FIG. 47

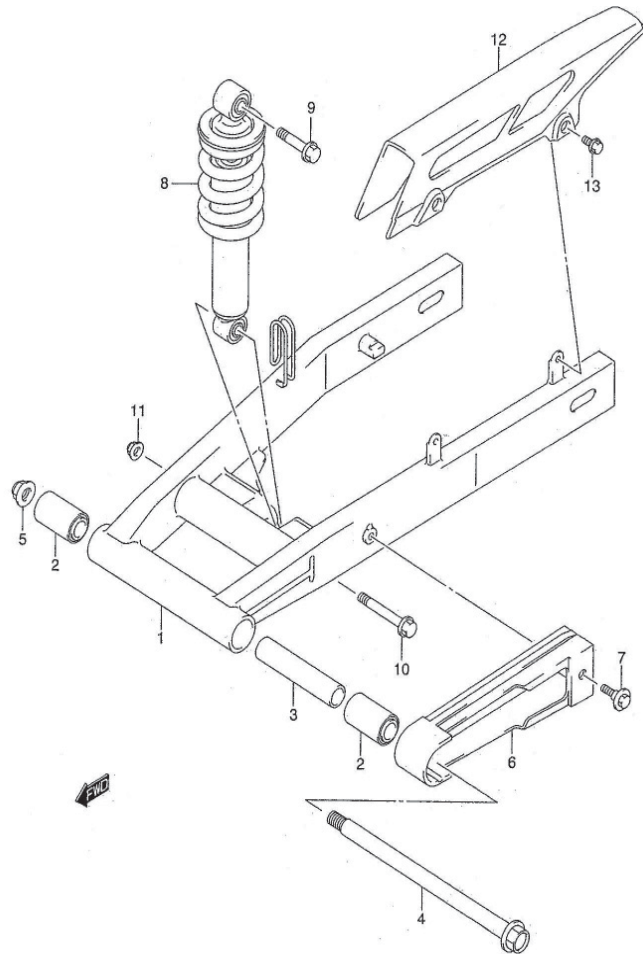
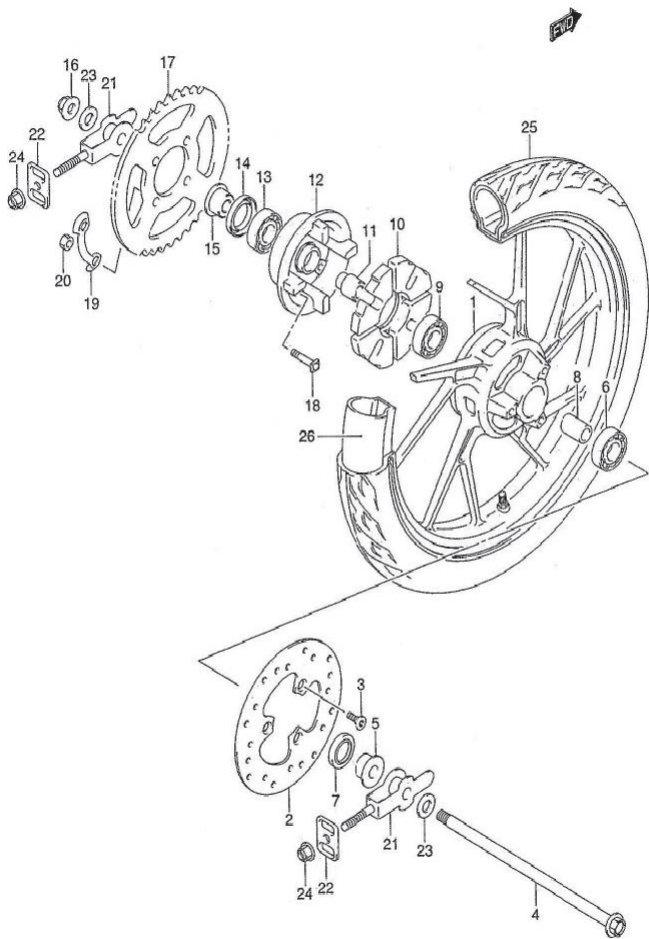


FIG. 47 REAR SWINGING ARM

REF NO.	PART NO.	DESCRIPTION	QTY	REMARKS
1	61100B25G10N019	SWINGING ARM SET, REAR	1	
2	61230B25G00N000	BUSH	2	
3	61282-25G00-000	SPACER, CENTER	1	
4	61211B25G20N000	SHAFT, REAR SWINGING ARM	1	
5	08319-3112A-000	NUT	1	
6	61273B25G10N000	BUFFER, CHAIN TOUCH DEFENSE	1	
7	61361-09G00-000	BOLT	1	
8	62100B25G40NW6L	ABSORBER ASSY, REAR SHOCK	1	
9	62311B25G00N000	BOLT, UPPER	1	
10	62313B25G00N000	BOLT, LOWER	1	
11	08319-31103-000	NUT	1	
12	61311B21D00N000	CASE, CHAIN	1	
13	61361-09G00-000	BOLT	2	

FIG. 48



4

FIG. 48 REAR WHEEL

REF NO.	PART NO.	DESCRIPTION	QTY	REMARKS
1	64111B25G20NYSW	WHEEL, REAR (17X1.85)	1	
2	69211B25G40N000	DISC, REAR BRAKE	1	
3	59218-09G00-000	BOLT	3	
4	64711B25G00N000	AXLE, REAR	1	
5	64741B25G00N000	SPACER, REAR AXLE, RH	1	
6	08113B63017N000	BEARING, RH	1	
7	09285-25L01-000	SEAL, OIL (25X40X6)	1	
8	09180B12086N000	SPACER, BEARING	1	
9	08143B62017N001	BEARING, LH	1	
10	64651B30D60N000	ABSORBER, REAR HUB SHOCK	1	
11	64733-43000-000	RETAINER, REAR SPROCKET DRUM	1	
12	64611B39200N000	DRUM, SPROCKET MOUNTING	1	
13	08113-62037-000	BEARING	1	
14	09285-25L01-000	OIL SEAL (25X40X6)	1	
15	64741B25G00N000	SPACER, REAR SPROCKET DRUM	1	
16	08319-3112A-000	NUT	1	
17	64511B21D13N000	SPROCKET, REAR (NT:43)	1	
18	09105-08011-000	BOLT	4	
19	09169-08011-000	LOCK WASHER	2	
20	08310-0008B-000	NUT	4	
21	61410B28F00N000	ADJUSTER, CHAIN	2	
22	61421B05F00N000	PLATE, CHAIN ADJUSTER GUIDE	2	
23	09160-12085-000	WASHER	2	
24	08319-3108A-000	NUT	2	
25	65110B20G20N000	TIRE, REAR (80/90-17 44P)	1	
26	65200B20G81N000	TUBE ASSY, WHEEL INNER	1	

FIG. 49

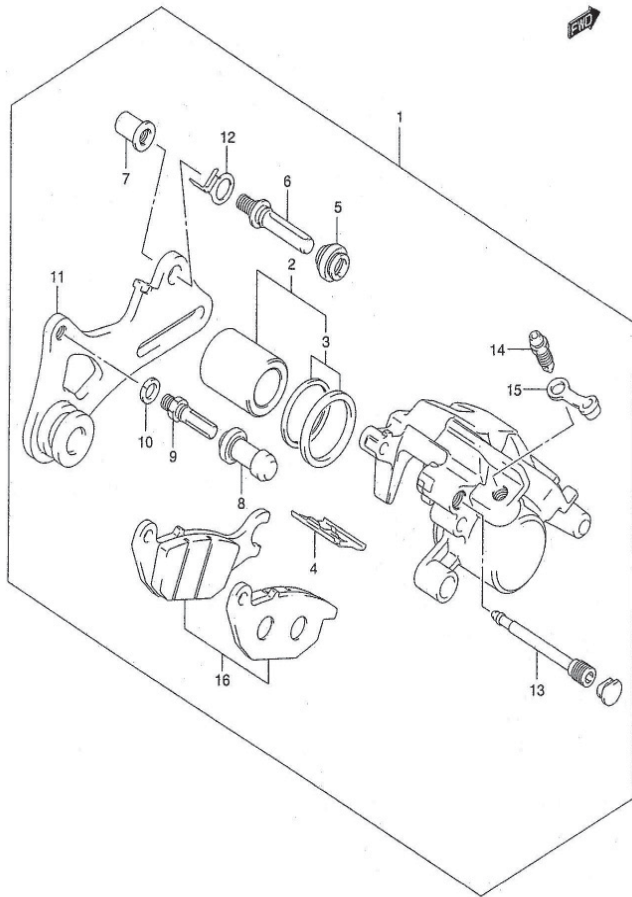
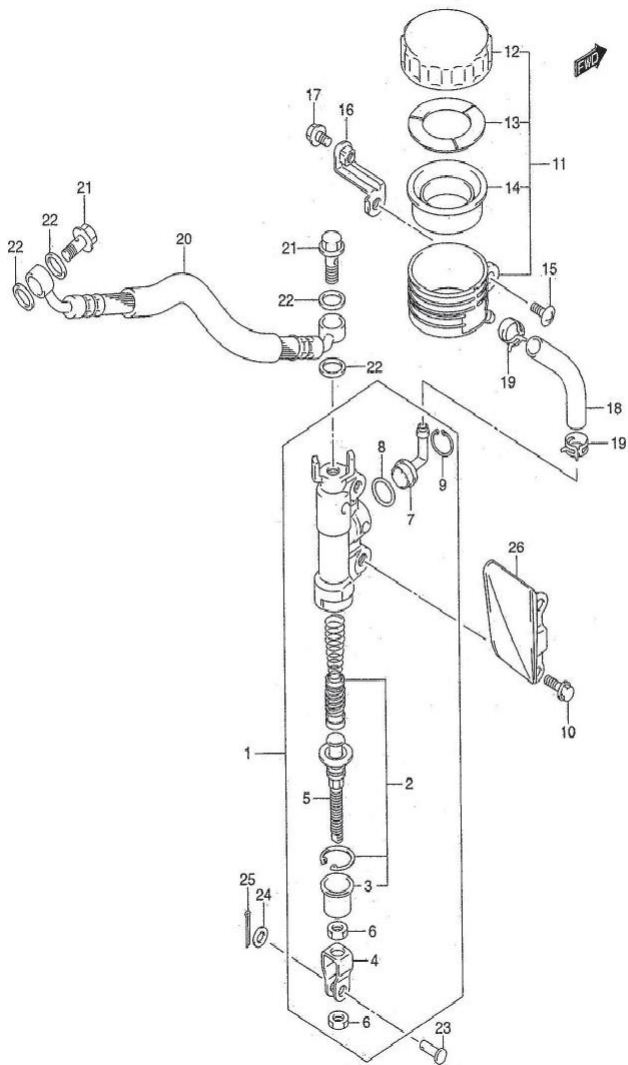


FIG. 49 REAR CALIPER

REF NO.	PART NO.	DESCRIPTION	QTY	REMARKS
1	69100B25G01N000	CALIPER ASSY, REAR	1	
2	69100-20850-000	.PISTON SET	1	
3	59100B38860N000	..SEAL SET PISTON	1	
4	69115B20G01N000	.SPRING	1	
5	59303-14500L000	.BOOT	1	
6	59387-00B20L000	.PIN	1	
7	59388-00B20L000	.NUT	1	
8	59386-13A00L000	.BOOT	1	
9	59382-13A00L000	.PIN	1	
10	59314-13A00L000	.WASHER	1	
11	69721B25G00N000	.BRACKET	1	
12	69116-20G00-000	RETAINER	1	
13	69345-20G00-000	PIN, HANGER	2	
14	59121-01A00L000	.BLEEDER	1	
15	59122-01A00L000	.CAP	1	
16	69100-41810-000	PAD SET	1	

FIG. 50



4

FIG. 50 REAR MASTER CYLINDER

REF NO.	PART NO.	DESCRIPTION	QTY	REMARKS
1	69600-21D00-000	CYLINDER ASSY, REAR MASTER	1	
2	69600-21810L000	.PISTON/CUP SET	1	
3	69691-00A00L000	.BOOT	1	
4	69692-27A30L000	.YOKE	1	
5	69670-00B21L000	.ROD, PUSH	1	
6	69693-05A00L000	.NUT	2	
7	69672-00B20L000	.CONNECTOR	1	
8	69686-34200L000	.O RING	1	
9	69674-00B20L000	.CIRCLIP	1	
10	01550B06207N000	BOLT	2	
11	69740B20G00N000	TANK ASSY, RESERVOIR	1	
12	69669B20G00N000	.CAP	1	
13	59668B18441N000	.PLATE	1	
14	59667B18441N000	.DIAPHRAGM	1	
15	02142B0612BN000	SCREW, RESERVOIR TANK	1	
16	69750-25G00-000	BRACKET, RESERVOIR TANK	1	
17	01550B0610BN000	BOLT, TANK BRACKET	1	
18	69731-25G10-000	HOSE, RESERVOIR TANK	1	
19	69735B25G10N000	CLAMP, HOSE	2	
20	69480B25G00N000	HOSE, REAR BRAKE	1	
21	09360-10062-000	BOLT	2	
22	09168-10033-000	WASHER	4	
23	09200-06037-000	PIN	1	
24	08322-01063-000	WASHER	1	
25	04111-2015A-000	PIN, COTTER	1	
26	69641B25G10N000	COVER, MASTER CYLINDER	1	

FIG. 51



FIG. 51 TAPE SET

REF NO.	PART NO.	DESCRIPTION	QTY	REMARKS
	68000M25G10-HJK	TAPE SET, body cover	1	For Dark Grey / New Titan Black Motorcycle
	68000M25G10-HEG	TAPE SET, body cover	1	For Autumn Red / New Titan Black Motorcycle
1-1	68111M25G10-HJK	TAPE SET, frame cover R/L	1	For Dark Grey / New Titan Black Motorcycle
1-2	68111M25G10-HEG	TAPE SET, frame cover R/L	1	For Autumn Red / New Titan Black Motorcycle
2-1	68110M25G10-HJK	TAPE SET, front frame cover R/L	1	For Dark Grey / New Titan Black Motorcycle
2-2	68110M25G10-HEG	TAPE SET, front frame cover R/L	1	For Autumn Red / New Titan Black Motorcycle
3-1	68240M25G10-HJK	TAPE SET, rear cowling lower R/L	1	For Dark Grey / New Titan Black Motorcycle
3-2	68240M25G10-HEG	TAPE SET, rear cowling lower R/L	1	For Autumn Red / New Titan Black Motorcycle
4-1	68220M25G10-HJK	TAPE SET, front cowling lower R/L	1	For Dark Grey / New Titan Black Motorcycle
4-2	68220M25G10-HEG	TAPE SET, front cowling lower R/L	1	For Autumn Red / New Titan Black Motorcycle
5-1	68230M25G10-HJK	TAPE SET, middle cowling lower R/L	1	For Dark Grey / New Titan Black Motorcycle
5-2	68230M25G10-HEG	TAPE SET, middle cowling lower R/L	1	For Autumn Red / New Titan Black Motorcycle
6-1	68260M25G10-HJK	TAPE SET, cowling lower R/L	1	For Dark Grey / New Titan Black Motorcycle
6-2	68260M25G10-HEG	TAPE SET, cowling lower R/L	1	For Autumn Red / New Titan Black Motorcycle
7-1	68260M25G10-HJK	TAPE SET, housing headlamp R/L	1	For Dark Grey / New Titan Black Motorcycle
7-2	68260M25G10-HEG	TAPE SET, housing headlamp R/L	1	For Autumn Red / New Titan Black Motorcycle
8	68210M25G10-000	EMBLEM "6 SPEED"	2	
9	68212-45H00-000	EMBLEM "S" LOGO	1	



PART NO.	FIG. NO. REF.NO.	PART NO.	FIG. NO. REF.NO.	PART NO.	FIG. NO. REF.NO.
00000		02112-35127-000	11 - 20	07120-05123-000	25 - 12
		02112B05123N000	32 - 4	07130-06163-000	15 - 10
		02112B0512BN000	38 - 17	07130-08163-000	25 - 13
		02112B0610BN000	41 - 17	07130-08253-000	13 - 6
		02112B0612BN000	6 - 11	07130B06103N000	18 - 36
01421B0616BN000	16 - 8	02112B0612BN000	18 - 10	07130B0616BN000	7 - 6
01421B0625BN000	2 - 15	02112B0612BN000	19 - 11	08110A69050U000	19 - 7
01421B0625BN000	3 - 2	02112B0612BN000	24 - 2	08113-62037-000	48 - 13
01500-0620B-000	19 - 28	02112B0616BN000	2 - 20	08113-63010L000	48 - 6
01500-0825B-000	20 - 15	02112B0616BN000	24 - 7	08113A62020U000	18 - 21
01500B0610BN000	18 - 31	02112B0620BN000	22 - 5	08113B63017N000	44 - 2
01500B0616BN000	17 - 24	02112B7516AN000	19 - 36	08123A60020U000	18 - 11
01500B0616BN000	20 - 13	02122B0612BN000	18 - 29	08143B62017N001	48 - 9
01547-0620B-000	10 - 9	02122B06253N000	14 - 5	08211-06141-000	19 - 15
01547-0630B-000	5 - 5	02142-06167-000	35 - 11	08211-06181-000	10 - 5
01547-0630B-000	5 - 22	02142B0510BN000	22 - 4	08211-06181-000	19 - 16
01547-0635B-000	5 - 12	02142B0510BN000	22 - 7	08211-14321-000	20 - 10
01547-06407-000	4 - 4	02142B0516BN000	34 - 6	08211-15251-000	18 - 14
01547B0612BN000	37 - 2	02142B06123N000	12 - 12	08211-20352-000	17 - 7
01547B06163N000	14 - 13	02142B06123N000	50 - 15	08211B10285N000	8 - 10
01547B06253N000	5 - 21	02142B0616BN000	34 - 5	08310-00063-000	41 - 9
01547B06253N000	21 - 11	02142B0616BN000	40 - 3	08310-00083-000	48 - 20
01547B06403N000	4 - 3	03211B04206N000	27 - 4	08316-10063-000	2 - 16
01547B06503N000	5 - 13	03541-05103-000	35 - 8	08316-10063-000	3 - 3
01547B06653N000	4 - 5	03541-05123-000	27 - 13	08316-10063-000	16 - 9
01547B0670BN000	14 - 12	03541-05123-000	40 - 7	08316-10063-000	19 - 17
01550-06103-000	46 - 15	03541-05163-000	25 - 9	08316-10123-000	22 - 8
01550-0612BN000	32 - 5	03541-05163-000	26 - 9	08319-31083-000	13 - 11
01550-06163-000	33 - 2	03541-05163-000	34 - 7	08319-31083-000	38 - 4
01550-08353-000	43 - 6	03541-0520B-000	12 - 11	08319-31088-000	48 - 24
01550-08353-000	43 - 7	03541-0520B-000	27 - 14	08319-31103-000	31 - 6
01550-10163-000	8 - 9	03541B15163N000	35 - 15	08319-31103-000	47 - 11
01550B06103N000	28 - 10	04111-30308-000	30 - 3	08319-31107-000	4 - 18
01550B06103N000	50 - 17	04111-30308-000	30 - 15	08319-31107-000	30 - 10
01550B0612BN000	2 - 10	04111B20158N000	19 - 31	08319-31128-000	44 - 7
01550B0612BN000	2 - 11	04111B20158N000	50 - 25	08319-31128-000	47 - 5
01550B0612BN000	4 - 8	04211-09149-000	5 - 4	08319-31128-000	48 - 16
01550B06207N000	50 - 10	04211-09149-000	5 - 16	08319B21063N000	39 - 5
01550B0620BN000	13 - 5	04211-09149-000	5 - 23	08322-01053-000	9 - 5
01550B0820BN000	31 - 5	04211-11129-000	3 - 5	08322-01063-000	50 - 24
01550B1025BN000	29 - 3	04211-11169-000	2 - 8	08322-01163-000	30 - 4
01570-08353-000	13 - 7	04211-13189-000	4 - 2	08331-31149-000	19 - 26
02112-04083-000	11 - 14	04221-04089-000	19 - 6	08332-11043-000	31 - 14
02112-04107-000	11 - 24	06111B06003N000	43 - 12	08332-11063-000	14 - 4
02112-05087-000	11 - 35	06112-07004-000	31 - 10	08332-11063-000	41 - 11

PART NO.	FIG. NO. REF.NO.	PART NO.	FIG. NO. REF.NO.	PART NO.	FIG. NO. REF.NO.
08341-31039-000	22 - 9	09161-18005-000	19 - 33	09262-20019-000	18 - 8
08361-35068-000	21 - 12	09161B06024N000	19 - 30	09262-20019-000	18 - 27
09103-06108-000	2 - 5	09164-16005-000	6 - 14	09262-20121-000	8 - 3
09103-06108-000	2 - 12	09164-16005-000	17 - 4	09262-20137-000	8 - 2
09103-06132-000	2 - 4	09164-18002-000	19 - 34	09262-28035-000	6 - 7
09103-08107-000	45 - 16	09164-58002-000	8 - 7	09262-35038-000	6 - 8
09103-08289-000	2 - 22	09167-20011-000	18 - 23	09263-10002-000	17 - 16
09103-08305-000	2 - 13	09168-06004-000	2 - 9	09263-30048-0B0	6 - 5
09103-08353-000	38 - 3	09168-06004-000	4 - 9	09263A14027U000	19 - 22
09103-10052-000	4 - 16	09168-08021-000	2 - 14	09280-04004-000	4 - 14
09103-10148-000	4 - 17	09168-10012-000	2 - 24	09280-12008-000	15 - 9
09105-08011-000	48 - 18	09168-10033-000	46 - 12	09280-13004-000	14 - 10
09106-05027-000	9 - 4	09168-10033-000	50 - 22	09280-17003-000	5 - 7
09106-07009-000	1 - 3	09168-12002-000	4 - 7	09280-19005-000	18 - 37
09111-06076-000	39 - 4	09168-12002-000	4 - 10	09280-22008-000	5 - 15
09116-05020-000	17 - 19	09168-12002-000	4 - 12	09280-24003-000	21 - 10
09116-06111-000	36 - 4	09168-14002-000	5 - 9	09280-26007-000	19 - 37
09116-06143-000	15 - 2	09168-14002-000	5 - 19	09280-35001-000	2 - 19
09125-06091-000	34 - 9	09168-14015-000	15 - 7	09280-54001-000	14 - 8
09127-06018-000	38 - 6	09169-06011-000	35 - 10	09280B17002N000	42 - 16
09136-05051-000	26 - 8	09169-06011-000	36 - 7	09282-12001-000	6 - 9
09136B05052N000	35 - 12	09169-06053-000	37 - 4	09283-14004-000	19 - 23
09139B06145N000	36 - 8	09169-08011-000	48 - 19	09283-16006-000	20 - 8
09139B06145N000	37 - 3	09169-16003-000	17 - 9	09283-27010-000	18 - 26
09140-16019-000	6 - 13	09180-06310-000	15 - 3	09285-10004-000	17 - 22
09140-16019-000	17 - 2	09180-08151-000	13 - 9	09285-25003-000	44 - 4
09140B16001N000	17 - 10	09180-12145-000	44 - 3	09285-25003-000	48 - 7
09148-05038-000	27 - 8	09180-13007-000	7 - 4	09285-25003-000	48 - 14
09148-05038-000	35 - 14	09180B12086N000	48 - 8	09289-04002-000	9 - 13
09148-05038-000	40 - 4	09181-14167-000	19 - 21	09320-08018-000	34 - 4
09148-05045-000	35 - 13	09181-20167-000	18 - 24	09320-08028-000	25 - 7
09159-06024-000	38 - 11	09200-06037-000	50 - 23	09320-09016-000	25 - 8
09160-05045-000	25 - 6	09206-08001-000	2 - 3	09320-09016-000	27 - 11
09160-05045-000	27 - 9	09206-13003-000	5 - 17	09320-10015-000	15 - 4
09160-05045-000	40 - 8	09206-13003-000	7 - 5	09320-12032-000	13 - 10
09160-06077-000	41 - 8	09208-06003-000	31 - 9	09320B09050N000	27 - 12
09160-06126-000	38 - 9	09209-05011-000	19 - 38	09320M09026-000	36 - 6
09160-08032-000	13 - 8	09247-12103-000	4 - 6	09352-40703-600	11 - 41
09160-12085-000	48 - 23	09247-12103-000	4 - 11	09352B1116N370	16 - 3
09160-12086-000	17 - 21	09247-12106-000	4 - 13	09359B40701N300	16 - 6
09160-15049-000	30 - 13	09247-14026-000	5 - 18	09359B40701N300	33 - 8
09160-16003-000	17 - 3	09248-14011-000	5 - 8	09360-10042-000	46 - 11
09160-16003-000	20 - 9	09259-26013-000	5 - 14	09360-10042-000	50 - 21
09160-20056-000	17 - 13	09261-02001-000	14 - 3	09360-10047-000	2 - 25
09161-11008-000	1 - 4	09262-15023-000	18 - 25	09360-12006-000	15 - 8

5





PART NO.	FIG. NO. REF. NO.	PART NO.	FIG. NO. REF. NO.	PART NO.	FIG. NO. REF. NO.	PART NO.	FIG. NO. REF. NO.	PART NO.	FIG. NO. REF. NO.	PART NO.	FIG. NO. REF. NO.
09380-20009-000	18 - 5	10000		12830-25G10-000	10 - 7	20000		13383-25G00-000	11 - 11	25421-35410-000	19 - 4
09380-20009-000	18 - 22			12837A25G00U000	10 - 8			13387-47010-000	11 - 10	25510B47E21N000	19 - 18
09380B38005N000	8 - 8			12891-25G00-000	9 - 6			13394-10010-000	11 - 9	25512-13E11-000	19 - 19
09381-10004-000	2 - 2			12892-05C00-120	9 - 14-1			13411-01010-000	11 - 33	25520B25G00N000	19 - 27
09381-16001-000	6 - 20			12892-05C00-125	9 - 14-2			13412-23F50-000	11 - 19	25525-25G00-000	19 - 29
09401-06101-000	33 - 9	11100-25G00-0T0	2 - 1	12892-05C00-130	9 - 14-3	13417-01010-000	11 - 32	2100S25G10U000	22	25600B25G00N000	19 - 32
09401-09403-000	33 - 6	11115-33D71-000	2 - 6	12892-05C00-135	9 - 14-4	13418-12F40-000	11 - 6	21111-25G00T000	6 - 12	25671-01011-000	19 - 20
09401-11101-000	12 - 10	11141A25G00U000	2 - 7	12892-05C00-140	9 - 14-5	13418-43410-000	11 - 31	21111-25G00T000	17 - 1	26211-47E10-000	20 - 1
09401-14301-000	12 - 8	11171A47E50U000	1 - 1	12892-05C00-145	9 - 14-6	13480-10F00-000	11 - 38	21200-25G00T000	17 - 6	26221A30A00U000	20 - 3
09401B10409N000	33 - 4	11173-47E50-000	1 - 2	12892-05C00-150	9 - 14-7	13481-25G00-000	11 - 39	21251-13E10-000	17 - 14	26231-09410-000	20 - 2
09401B1510N000	16 - 7	11186B25G10N000	4 - 19	12892-05C00-155	9 - 14-8	13481B33E00N000	11 - 7	21411-05200-000	17 - 8	26232-09401-000	20 - 11
09402-44208-000	2 - 21	11211-25G00-0F0	3 - 1	12892-05C00-160	9 - 14-9	13500-25G00-000	11 - 4	21441-25G00-000	17 - 11	26233-09400-000	20 - 12
09404-06435-000	22 - 6	11241B25G10N000	3 - 4	12892-05C00-165	9 - 14-10	13502B10F00N000	11 - 37	21451-28030-000	17 - 12	26241-47E20-000	20 - 5
09404-18402-000	23 - 7	11280-47E00-000	2 - 23	12892-05C00-170	9 - 14-11	13502-25G00-000	11 - 3	21462-46901-000	17 - 17	26242-47E00-000	20 - 6
09407-18402-000	28 - 3-2	11300A25G10U000	4 - 1	12892-05C00-175	9 - 14-12	13503-25G00-000	11 - 5	23165-48000-000	17 - 15	26300B25G00N000	20 - 14
09407-18402-000	38 - 15	11340A47E00U000	5 - 1	12892-05C00-180	9 - 14-13	13507-25G00-000	11 - 2	23261-13A01-000	17 - 20	27511A25G00U000	18 - 32
09407-25401-000	28 - 3-3	11342-25G00-000	5 - 6	12892-05C00-185	9 - 14-14	13601-04148-000	11 - 36	23271A47E00U000	17 - 23	27512B25G00N000	18 - 33
09407B11401N000	28 - 3-1	11351A47E10U000	5 - 10	12892-05C00-190	9 - 14-15	13681-04010-000	11 - 30	24121-25G00-000	18 - 1	27531-25G00-000	18 - 34
09421-04004-000	6 - 15	11360B25G00N000	5 - 20	12892-05C00-195	9 - 14-16	13684-47E00-000	11 - 25	24125-25G00-000	18 - 2	27600B20960N120	18 - 35
09421-04004-000	17 - 5	11482A25G00U000	5 - 3	12892-05C00-200	9 - 14-17	13700-25G01-000	12 - 1	24130-25G00-000	18 - 12		
09440-04010-000	19 - 39	11483A25G00U000	5 - 11	12892-05C00-205	9 - 14-18	13741B25G00N000	12 - 2	24221-25G00-000	18 - 3		
09440-05005-000	31 - 11	11971-45010-000	5 - 2	12892-05C00-210	9 - 14-19	13746B25G00N000	12 - 3	24231-25G00-000	18 - 4		
09440-15014-000	17 - 18	12111-25G00-0F0	6 - 17	12892-05C00-215	9 - 14-20	13780-25G00-000	12 - 4	24251-25G00-000	18 - 6		
09440-17013-000	19 - 24	12140-25G00-000	6 - 18	12892-05C00-220	9 - 14-21	13826-25G00-000	12 - 6	24261-25G00-000	18 - 7	30000	
09440-18002-000	14 - 11	12151-25G00-000	6 - 19	12911-16E00-000	9 - 7	13853B25G00N000	12 - 7	24311-25G00-000	18 - 13		
09440-30007-000	20 - 7	12161-25G00-0B0	6 - 3	12912-16E00-000	9 - 8	13871-09G00-000	12 - 9	24321-25G00-000	18 - 15	31100-47E10-000	21 - 1
09443B06075N000	28 - 8	12210-25G00-000	6 - 4	12921-47E00-000	9 - 9	13881-25G00-000	12 - 5	24331-25G00-000	18 - 16	31130-13E00-000	21 - 2
09443M14022-000	30 - 8	12220-25G00-000	6 - 1	12931-25G00-000	9 - 10	13888-19B00-000	16 - 4	24341-25G00-000	18 - 17	31132-13E00-000	21 - 4
09444-20007-000	19 - 25	12261-25G10-000	6 - 2	12932-32C00-000	9 - 11	14150B25G00N000	13 - 2	24351-25G00-000	18 - 18	31135-31300-000	21 - 5
09448-38004-000	20 - 4	12611-25G00-000	7 - 1	12933-16E00-000	9 - 12	14181-25G00-000	13 - 3	24359-05200-000	18 - 19	31143-49040-000	21 - 3
09471-12082-000	26 - 11	12614-05F10-000	7 - 2	13110-25G00-000	2 - 18	14181B47E10N000	13 - 1	24361-25G00-000	18 - 20	31156-13E00-000	21 - 9
09471B12203N000	26 - 6	12620-25G00-000	7 - 3	13200A25G11U000	11 - 1-1	14310B25G40N000	13 - 4	24741-05200-000	18 - 28	31170-19B10-000	21 - 7
09471B12203N000	27 - 7	12650-25G00-000	8 - 1	13240-47E00-000	11 - 17	14760B25G40N000	13 - 12	24741-12B00-000	18 - 9	31264-13E00-000	21 - 6
09471B12213N000	26 - 4	12661-25G00-000	6 - 6	13247-25G00-000	11 - 40	16321-47E00-000	6 - 16	24741-12B00-000	19 - 10	31280-15D10-000	21 - 8
09471B12213N000	27 - 6	12663B47E50N000	8 - 4	13254-20010-000	11 - 13	16331-47E00-000	14 - 2	24742-18A00-000	6 - 10	31497-45000-000	22 - 3
09471B23FA0N000	26 - 5	12666-25G00-000	8 - 5	13258-23F00-000	11 - 12	16400-47E20-000	14 - 1	24751-05210-000	18 - 30	31800B25G00N000	24 - 11
09481B10101N000	24 - 13	12686-25G00-000	8 - 6	13258-23F10-000	11 - 34	16460-25G00-000	15 - 5	25211-25G00-000	19 - 1	31861-47E00-000	24 - 12
09482M00456-000	2 - 17	12710-25G01-000	9 - 1	13267-20E20-000	11 - 22	16470-25G00-000	15 - 6	25231-25G00-000	19 - 2	32101-25G00-000	22 - 1
09491-22013-000	11 - 15	12720-25G01-000	9 - 2	13268-37420-000	11 - 23	16510-05240-000	14 - 7	25310-47E20-000	19 - 5	32102-25G10-000	22 - 2
09492-12003-000	11 - 21	12741-25G00-000	9 - 3	13268-47070-000	11 - 27	16512A47E20U000	14 - 9	25312-12C00-000	19 - 9	32800-47E00-000	24 - 1
09493-24012-000	4 - 15	12760-25G00-000	10 - 1	13279-23F20-000	11 - 26	16520-30A00-000	14 - 6	25350-26D01-000	19 - 12	32900B25G01N000	24 - 3
09494-00540-000	11 - 16	12771-25G00-000	10 - 2	13291-29900-000	11 - 28	16600-25G00-000	15 - 1	25355-26D10-000	19 - 13	32980-28F00-000	24 - 4
09800-21051T000	40 - 5	12782-25G00-000	10 - 3	13295-29900-000	11 - 29	18450-06G00-000	16 - 1	25356-12C00-000	19 - 14	33410B25G00N000	24 - 6
		12811-25G01-000	10 - 6	13342-25G00-000	11 - 18	18510-25G00-000	16 - 2	25381-25G00-000	19 - 8	33510-48B10-000	24 - 8
		12812-35C00-000	10 - 4	13382-16D30-000	11 - 8	18712B29F00N000	16 - 5	25411-21D10-000	19 - 3	33541-23E01-000	24 - 9

5





PART NO.	FIG. NO.	REF.NO.	PART NO.	FIG. NO.	REF.NO.	PART NO.	FIG. NO.	REF.NO.
33542-25G00-000	24	- 10	42310B47E01N000	30	- 7	50000		
33610B20GC0N000	23	- 1	42341-25G00-000	30	- 9			
33652-36100L000	23	- 4	43110-25G00-000	30	- 11			
33652-36100L000	24	- 5	43128-25G00-000	30	- 12			
33652B30D00N000	23	- 2	43211B25G00N000	30	- 14			
33652B35400N000	23	- 3	43501B25G00N000	31	- 1	51103B25G20N000	42	- 1
33810-47E10T000	23	- 5	43502B47E00N000	31	- 2	51104B25G20N000	42	- 2
33820B25G00N000	23	- 6	43540B25G00N000	31	- 4	51110B25G00N000	42	- 9
33860A30D10U000	28	- 11	43551-39110-000	31	- 3	51130B25G20N000	42	- 3
34100B25G10N000	25	- 1	43611-25G00-000	31	- 7	51140B25G20N000	42	- 4
34110B25G01N000	25	- 2	43621-25G00-000	31	- 8	51146-31CB0L000	42	- 11
34111B25G10N000	25	- 4	43811B25G01N000	31	- 15	51147-16510L000	42	- 18
34112B25G00N000	25	- 3	43812-25G00-000	31	- 17	51148B41310N000	42	- 19
34149-03G00-000	25	- 5	43816-33E21-000	31	- 12	51153-23F00L000	42	- 5
34810B25G00N000	32	- 3	43821B25G01N000	31	- 16	51156B43010N000	42	- 6
34981-25G00-000	25	- 10	43826-33E22-000	31	- 13	51172-27510-000	42	- 14
34990B25G10N000	25	- 11	44110B25G01N000	32	- 1	51173-23F00L000	42	- 7
35100B25G10N000	26	- 1	44210-35014-000	32	- 2	51176-23330-000	42	- 15
35121B25G10N000	26	- 2	44300-09G00-000	33	- 1	51176-25G00-000	42	- 13
35137-25G00-000	26	- 7	44322-27001-000	33	- 3	51177-35400L000	42	- 10
35171B25G10N000	26	- 3	44421B25G00N000	33	- 5	51196B39140N000	42	- 12
35710B25G00N000	27	- 1	44422B25G00N000	33	- 7	51201-25G00-000	42	- 8
35712B25G00N000	27	- 2	45100-25G01-000	41	- 1	51311B25G00N000	43	- 3
35713B25G00N000	27	- 5	45148-09G00-000	41	- 6	51351-25G00-000	42	- 17
35912B25G00N000	27	- 3	45149-09G00-000	41	- 2	51353-26F00-000	43	- 4
36610B25G20N000	28	- 1	45149-25G00-000	41	- 3	51356-10D03-000	43	- 5
36620B25G10N000	28	- 2	45149-35410-000	41	- 4	51410B25G00N000	43	- 1
36852B25G00N000	28	- 4	45215-09G10-000	41	- 10	51611B09G00N000	43	- 9
37100B25G00N000	28	- 5	45280B25G10N000	41	- 15	51612-35400-000	43	- 10
37146-03A00-000	28	- 6	45285-25G00-000	41	- 5	51621-28000-000	43	- 11
37400-25G00-000	39	- 15	45287C23F10C000	41	- 7	51622-35400-000	43	- 2
37720-25G00-000	19	- 35	45288-20G00-000	41	- 13	51631-28000-000	43	- 8
37740B45D00N000	28	- 7	45289-11F00-000	41	- 12	51643-25001-000	43	- 13
38500B25G00N000	28	- 9	45700-09G10-000	41	- 16	51811B25G10N	36	- 1
38610B09410N000	26	- 10	46211B25G10NX8E	29	- 2	51831-25G00-000	36	- 3
40000			47111B25G00N106	34	- 1	51832B25G00N000	36	- 5
			47140-25G00-000	34	- 8	51833B25G00N393	36	- 11
			47211B25G00N106	34	- 2	51850-25G00-000	36	- 2
			48131B25G00N393	35	- 1	53111B25G00N	37	- 1
			48211-09G00-000	27	- 10	53274-09G00-000	35	- 7
41100B25G30NYSW	29	- 1	48211B2501N000	35	- 6	53274-09G10-000	34	- 3
42100-25G11-000	30	- 1			54111B25G31N000	44	- 1	
42211-09G00-000	30	- 2			54751-25G01-000	44	- 6	
42241-09G00-000	30	- 6			55110B20G80N000	44	- 10	
42272-09G00-000	30	- 5			55200B20G81N000	44	- 11	

PART NO.	FIG. NO.	REF.NO.	PART NO.	FIG. NO.	REF.NO.	PART NO.	FIG. NO.	REF.NO.
56110B25G20N000	38	- 1	59386-13A00L000	49	- 8	64711-09G00-000	44	- 5
56150B25G10N000	38	- 2	59387-00B20L000	45	- 10	64711B25G00N000	48	- 4
56272B23F10N000	38	- 7	59387-00B20L000	49	- 6	64733-43000-000	48	- 11
56272B23F10N000	38	- 10	59388-00B20L000	45	- 11	64741B25G00N000	48	- 5
56276-16H00-000	38	- 8	59388-00B20L000	49	- 7	64741B25G00N000	48	- 15
56278M05F00-000	38	- 5	59480B25G00N000	46	- 13	65110B20G20N000	48	- 25
56500B28F10N000	38	- 12	59600-21810L000	46	- 2	65200B20G81N000	48	- 26
56600B28F10N000	38	- 13	59600B21D30N000	46	- 1	68000M25G10-HEG	51	
57100-09G01-000	39	- 2	59664B32F00N000	46	- 10	68000M25G10-HJK	51	
57110-23F10L000	39	- 1	59666B44300N000	46	- 3	68110M25G10-HEG	51	- 2-2
57211-22D01L000	39	- 7	59667B18441N000	50	- 14	68110M25G10-HJK	51	- 2-1
57421-21D10L100	39	- 3	59667B44B00N000	46	- 4	68111M25G10-HEG	51	- 1-2
57431-23F00-000	39	- 10	59668B18441N000	50	- 13	68111M25G10-HJK	51	- 1-1
57441-11010-000	39	- 12	59668B21D20N000	46	- 6	68210M25G10-000	51	- 8
57442-11010-000	39	- 13	59669B21D20N000	46	- 5	68220M25G10-HEG	51	- 4-2
57460B17C01N000	39	- 6	59671-36500-000	46	- 8	68220M25G10-HJK	51	- 4-1
57500-25G11-000	39	- 8	59675B02FA0N000	46	- 9	68230M25G10-HEG	51	- 5-2
57512-21D10-000	39	- 14				68230M25G10-HJK	51	- 5-1
57513-23F00-000	39	- 11				68240M25G10-HEG	51	- 3-2
57620-23F00-000	39	- 9				68240M25G10-HJK	51	- 3-1
58200A25G00U000	38	- 18				68260M25G10-HEG	51	- 6-2
58300A25G00U000	38	- 16				68260M25G10-HEG	51	- 7-2
58410A25G01U000	38	- 14				68260M25G10-HJK	51	- 6-1
58620B25G01U000	38	- 19				68260M25G10-HJK	51	- 7-1
59100B25810N000	45	- 15				68910M21E99E000	51	- 9
60000			59100B25G01NZ00	45	- 1	61100C25G01C000	47	- 1
			59100B38860N000	49	- 3	61211B25G10N000	47	- 4
			59121-01A00L000	45	- 8	61230-25G00-000	47	- 2
			59121-01A00L000	49	- 14	61273-25G10-000	47	- 6
			59122-01A00L000	45	- 9	61282B25G00N000	47	- 3
59122-01A00L000	49	- 15	61311-21D00L000	47	- 12	69115B20G01N000	49	- 4
59211B25G01N000	44	- 8	61361-09G00-000	40	- 2	69116-20G00-000	49	- 12
59218-09G00-000	44	- 9	61361-09G00-000	47	- 7	69211B16H00N000	48	- 2
59218-09G00-000	48	- 3	61361-09G00-000	47	- 13	69345-20G00-000	49	- 13
59260B25G00N000	46	- 14	61410B28F00N000	48	- 21	69480-25G00-000	50	- 20
59300-13820L000	45	- 3	61421-05F00T000	48	- 22	69600-21810L000	50	- 2
59303-14500L000	45	- 5	62100B25G30N000	47	- 8	69600-21D00-000	50	- 1
59303-14500L000	49	- 5	62311B25G00N000	47	- 9	69641-25G00-000	50	- 26
59314-13A00L000	45	- 12	62313B25G00N000	47	- 10	69669B20G00N000	50	- 12
59314-13A00L000	49	- 10	63111B25G03N000	40	- 1	69670B00B21L000	50	- 5
59345-14600L000	45	- 4	63191-25G00-000	40	- 6	69672-00B20L000	50	- 7
59351-21D00L000	45	- 14	64111B25G20N000	48	- 1	69674-00B20L000	50	- 9
59382-13A00L000	45	- 13	64511B26460NS01	48	- 17	69686-34200L000	50	- 8
59382-13A00L000	49	- 9	64611B39200N000	48	- 12	69689-49300L000	46	- 7
59386-13A00L000	45	- 6	64651B30D10N000	48	- 10	69691-00A00L000	50	- 3

5





PART NO.	FIG. NO. REF.NO.	PART NO.	FIG. NO. REF.NO.	PART NO.	FIG. NO. REF.NO.	PART NO.	FIG. NO. REF.NO.	PART NO.	FIG. NO. REF.NO.
69692-27A30L000	50 - 4								
69693-05A00L000	50 - 6								
69721-25G10-000	49 - 11								
69731-25G10-000	50 - 18								
69735-25G10-000	50 - 19								
69740B20G00N000	50 - 11								
69750-25G00-000	50 - 16								
90000									
94471B25G10N	35 - 2								
94481B25G10N	35 - 3								
94494N28G00N000	36 - -								
94510-25G10-000	35 - 16								
94517B25G10N000	35 - 4								
94518B25G10N000	35 - 5								
94520-25G10-000	35 - 17								
94541-25G00-000	35 - 9								
94611B25G00N000	36 - 9								
94619B28G00N000	36 - 10								
95700B14810N000	41 - 14								

5

